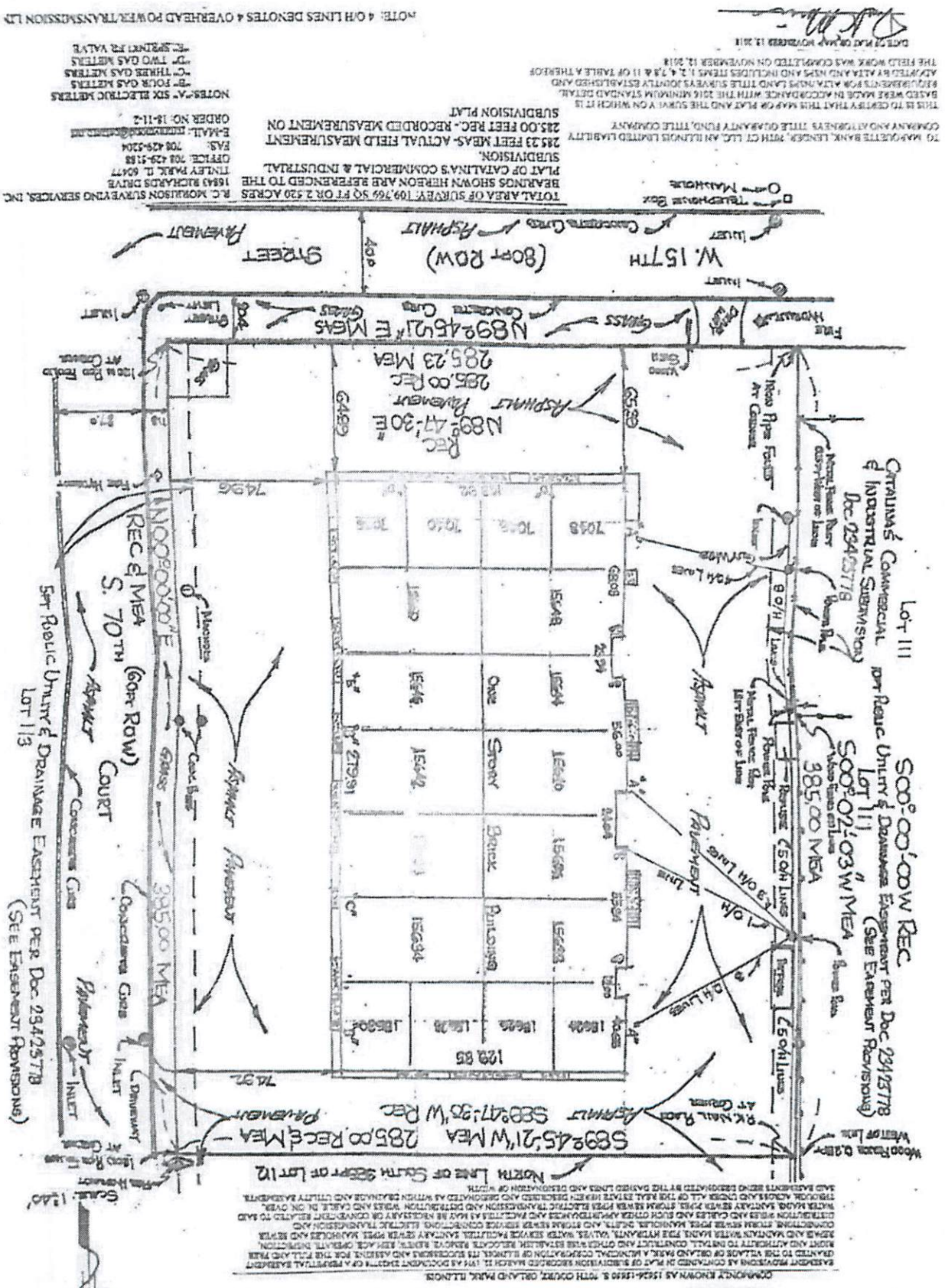




ALTA/CSM LAND TITLE SURVEY

THE SOUTH 385 FEET OF LOT 113 IN CANTON'S COMMERCIAL AND INDUSTRIAL SUBDIVISION OF LOTS 3 AND 4 IN SEVERAL BLOCKS, BEING A SUBDIVISION OF PART OF THE WEST 1/4 OF SECTION 10, TOWNSHIP 36 NORTH, RANGE 11 EAST OF THE THIRD PRINCIPAL MERIDIAN, ACCORDING TO THE PLAT THEREOF RECORDED NOVEMBER 2, 1975 AS DOCUMENT 221594, IN BOOK COUNTY, ILLINOIS.



DATE OF MAP NUMBER 11, 2011  
 THIS IS TO CERTIFY THAT THIS MAP OR PLAN AND THE SURVEY ON WHICH IT IS BASED WERE MADE IN ACCORDANCE WITH THE 2016 MINIMUM STANDARD REQUIREMENTS FOR ALTIMETERS AND TITLE SURVEYS JOINTLY ESTABLISHED AND ADOPTED BY ALTA AND NSPS AND INCLUDES ITEMS 1, 2, 4, 7A & 11 OF TABLE A THEREOF. THE FIELD WORK WAS COMPLETED ON NOVEMBER 12, 2011.

TO MARKET THE BANK LENSES, WITH CT, AN ILLINOIS LIMITED LIABILITY COMPANY AND OTHERS, TITLE QUANTITY FUND, TITLE COMPANY  
 TOTAL AREA OF SURVEY: 109,769 SQ FT OR 2.520 ACRES  
 BEARINGS SHOWN HEREON ARE REFERENCED TO THE PLAT OF CANTON'S COMMERCIAL & INDUSTRIAL SUBDIVISION.  
 245.23 FEET REC.-RECORDED FIELD MEASUREMENT ON SUBDIVISION PLAT  
 225.00 FEET REC.-RECORDED FIELD MEASUREMENT ON SUBDIVISION PLAT  
 ORDER NO. 18-11-2  
 NOTES: A- SIX ELECTRIC METERS  
 B- FOUR GAS METERS  
 C- THREE GAS METERS  
 D- TWO GAS METERS  
 E- SPRINKLER VALVE

NOTE: 4/8 LINES DENOTES 4 OVERHEAD POWER TRANSMISSION LN.

REC'D MEAS 285.00 REC  
 REC'D MEAS 285.23 MEA  
 REC'D MEAS 285.47'30" E MEAS  
 REC'D MEAS 285.45'21" W MEA  
 REC'D MEAS 285.00 REC  
 REC'D MEAS 285.23 MEA  
 REC'D MEAS 285.47'30" E MEAS  
 REC'D MEAS 285.45'21" W MEA

WOOD RIVER DRAINAGE DISTRICT  
 500'-00'-00" W REC  
 500'-02'-03" W MEA  
 385.00 MEA  
 500'-02'-03" W MEA  
 385.00 MEA

LOT 111  
 500'-02'-03" W MEA  
 385.00 MEA  
 500'-02'-03" W MEA  
 385.00 MEA

LOT 113  
 500'-02'-03" W MEA  
 385.00 MEA  
 500'-02'-03" W MEA  
 385.00 MEA

REC'D MEAS 285.00 REC  
 REC'D MEAS 285.23 MEA  
 REC'D MEAS 285.47'30" E MEAS  
 REC'D MEAS 285.45'21" W MEA  
 REC'D MEAS 285.00 REC  
 REC'D MEAS 285.23 MEA  
 REC'D MEAS 285.47'30" E MEAS  
 REC'D MEAS 285.45'21" W MEA

REC'D MEAS 285.00 REC  
 REC'D MEAS 285.23 MEA  
 REC'D MEAS 285.47'30" E MEAS  
 REC'D MEAS 285.45'21" W MEA  
 REC'D MEAS 285.00 REC  
 REC'D MEAS 285.23 MEA  
 REC'D MEAS 285.47'30" E MEAS  
 REC'D MEAS 285.45'21" W MEA

REC'D MEAS 285.00 REC  
 REC'D MEAS 285.23 MEA  
 REC'D MEAS 285.47'30" E MEAS  
 REC'D MEAS 285.45'21" W MEA  
 REC'D MEAS 285.00 REC  
 REC'D MEAS 285.23 MEA  
 REC'D MEAS 285.47'30" E MEAS  
 REC'D MEAS 285.45'21" W MEA

REC'D MEAS 285.00 REC  
 REC'D MEAS 285.23 MEA  
 REC'D MEAS 285.47'30" E MEAS  
 REC'D MEAS 285.45'21" W MEA  
 REC'D MEAS 285.00 REC  
 REC'D MEAS 285.23 MEA  
 REC'D MEAS 285.47'30" E MEAS  
 REC'D MEAS 285.45'21" W MEA

REC'D MEAS 285.00 REC  
 REC'D MEAS 285.23 MEA  
 REC'D MEAS 285.47'30" E MEAS  
 REC'D MEAS 285.45'21" W MEA  
 REC'D MEAS 285.00 REC  
 REC'D MEAS 285.23 MEA  
 REC'D MEAS 285.47'30" E MEAS  
 REC'D MEAS 285.45'21" W MEA

REC'D MEAS 285.00 REC  
 REC'D MEAS 285.23 MEA  
 REC'D MEAS 285.47'30" E MEAS  
 REC'D MEAS 285.45'21" W MEA  
 REC'D MEAS 285.00 REC  
 REC'D MEAS 285.23 MEA  
 REC'D MEAS 285.47'30" E MEAS  
 REC'D MEAS 285.45'21" W MEA

REC'D MEAS 285.00 REC  
 REC'D MEAS 285.23 MEA  
 REC'D MEAS 285.47'30" E MEAS  
 REC'D MEAS 285.45'21" W MEA  
 REC'D MEAS 285.00 REC  
 REC'D MEAS 285.23 MEA  
 REC'D MEAS 285.47'30" E MEAS  
 REC'D MEAS 285.45'21" W MEA

REC'D MEAS 285.00 REC  
 REC'D MEAS 285.23 MEA  
 REC'D MEAS 285.47'30" E MEAS  
 REC'D MEAS 285.45'21" W MEA  
 REC'D MEAS 285.00 REC  
 REC'D MEAS 285.23 MEA  
 REC'D MEAS 285.47'30" E MEAS  
 REC'D MEAS 285.45'21" W MEA

REC'D MEAS 285.00 REC  
 REC'D MEAS 285.23 MEA  
 REC'D MEAS 285.47'30" E MEAS  
 REC'D MEAS 285.45'21" W MEA  
 REC'D MEAS 285.00 REC  
 REC'D MEAS 285.23 MEA  
 REC'D MEAS 285.47'30" E MEAS  
 REC'D MEAS 285.45'21" W MEA

REC'D MEAS 285.00 REC  
 REC'D MEAS 285.23 MEA  
 REC'D MEAS 285.47'30" E MEAS  
 REC'D MEAS 285.45'21" W MEA  
 REC'D MEAS 285.00 REC  
 REC'D MEAS 285.23 MEA  
 REC'D MEAS 285.47'30" E MEAS  
 REC'D MEAS 285.45'21" W MEA

REC'D MEAS 285.00 REC  
 REC'D MEAS 285.23 MEA  
 REC'D MEAS 285.47'30" E MEAS  
 REC'D MEAS 285.45'21" W MEA  
 REC'D MEAS 285.00 REC  
 REC'D MEAS 285.23 MEA  
 REC'D MEAS 285.47'30" E MEAS  
 REC'D MEAS 285.45'21" W MEA

RECEIVED  
 FEB 04 2021