

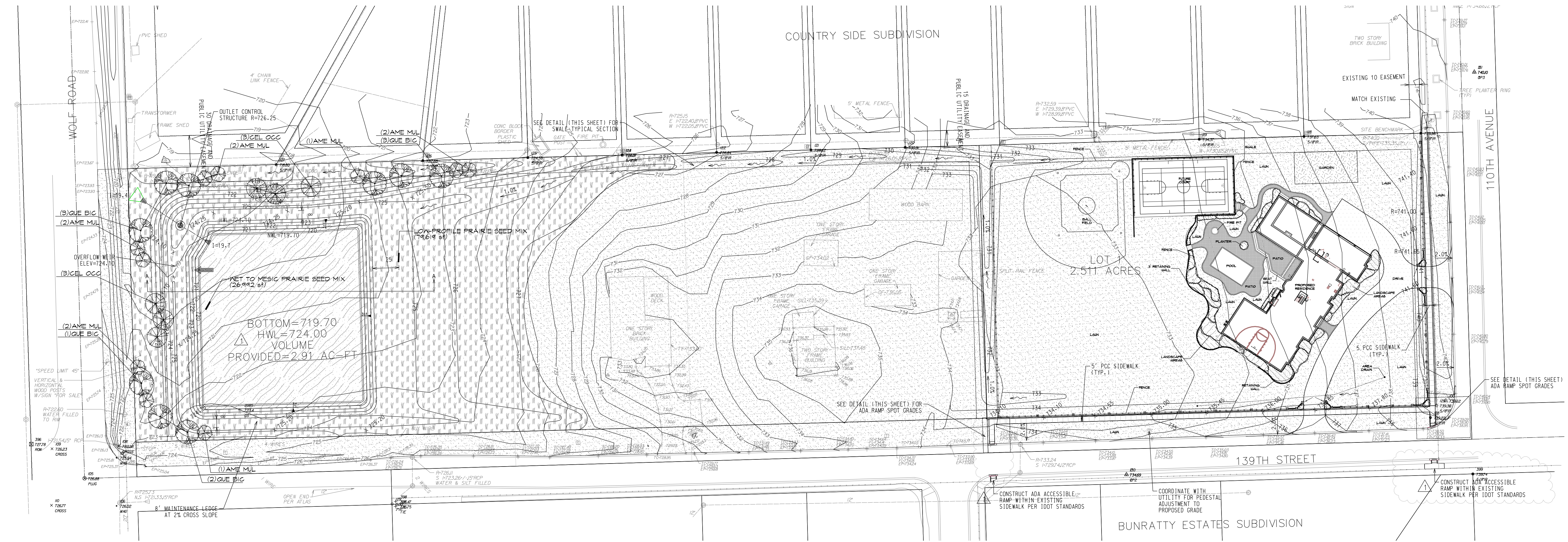


JGS	09/22/2015
JGS	10/31/2015

Site Landscape Plan

Vrdolyak Residence

Orland Park, Illinois



BASIN PLANT SCHEDULE

CANOPY TREES	BOTANICAL NAME / COMMON NAME	COND	SIZE	QTY
CEL OCC	CELTIS OCCIDENTALIS / COMMON HACKBERRY	B # B	2.5" CAL	6
QUE BIC	QUERCUS BICOLOR / SWAMP WHITE OAK	B # B	2.5" CAL	9

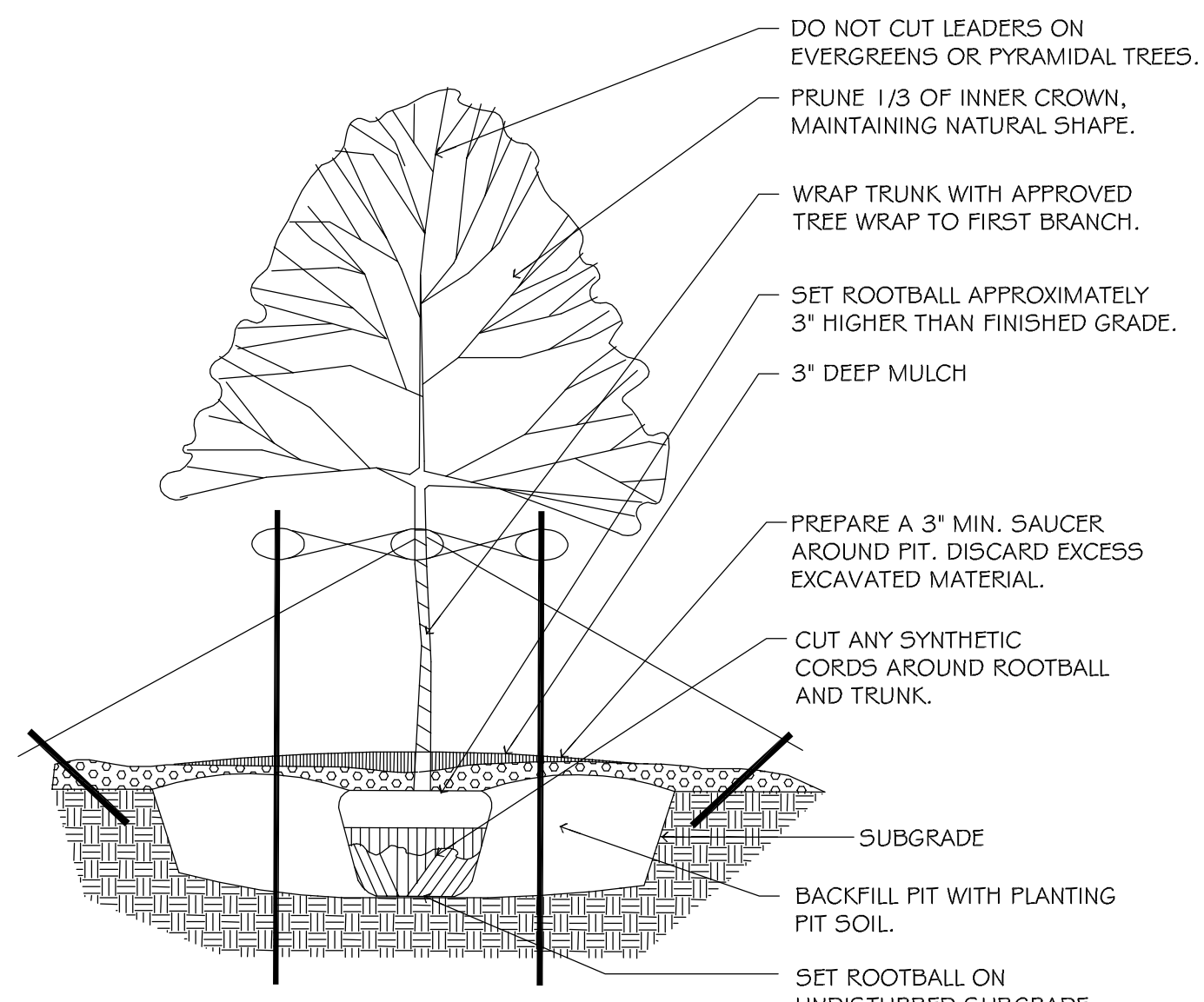
FLOWERING TREES	BOTANICAL NAME / COMMON NAME	COND	SIZE	QTY
AME MUL	AMELANCHIER CANADENSIS / SHADBLow SERVICEBERRY MULTITRUNK	MULTI-TRUNK	6' - 8' HT.	10

BASIN SEEDING SCHEDULE

	LOW-PROFILE PRAIRIE SEED MIX	79.619 SF
	WET TO MESIC PRAIRIE SEED MIX	26.992 SF

Scientific Name	Common Name	PLS Ounces/Acre
Temporary Cover:		
<i>Avena sativa</i>	Common Oat	360.00
<i>Lolium multiflorum</i>	Annual Rye	100.00
	Total	460.00
Permanent Grasses/Sedges:		
<i>Bouteloua curtipendula</i>	Side Oats Grama	16.00
<i>Carex cristatella</i>	Crested Oval Sedge	1.00
<i>Carex vulpinoidea</i>	Brown Fox sedge	1.00
<i>Carex scoparia</i>	Pointed Broom Sedge	1.00
<i>Elymus canadensis</i>	Canada Wild Rye	36.00
<i>Koeleria cristata</i>	June Grass	1.00
<i>Panicum virgatum</i>	Switch Grass	1.00
<i>Schizachyrium scoparium</i>	Little Bluestem	36.00
<i>Spartina pectinata</i>	Prairie Cord Grass	2.00
	Total	92.00
Forbs:		
<i>Amorpha canescens</i>	Lead Plant	0.50
<i>Anemone cylindrica</i>	Thimbleweed	0.50
<i>Asclepias syriaca</i>	Common Milkweed	2.00
<i>Asclepias tuberosa</i>	Butterfly Milkweed	2.00
<i>Aster ericoides</i>	Heath Aster	0.25
<i>Aster laevis</i>	Smooth Blue Aster	1.00
<i>Aster novae-angliae</i>	New England Aster	0.50
<i>Baptisia lactea</i>	White Wild Indigo	2.00
<i>Chamaecrista fasciculata</i>	Partridge Pea	12.00
<i>Coreopsis lanceolata</i>	Sand Coreopsis	5.00
<i>Coreopsis palmata</i>	Prairie Coreopsis	1.00
<i>Dalea candida</i>	White Prairie Clover	1.50
<i>Dalea purpurea</i>	Purple Prairie Clover	1.50
<i>Echinanthus illinoensis</i>	Hairy Beard Tongue	3.00
<i>Echinacea purpurea</i>	Broad-Leaved Purple	7.00
<i>Eryngium yuccifolium</i>	Rattlesnake Master	3.00
<i>Lespedeza capitata</i>	Round-Head Bush Clover	2.00
<i>Ligustrum sparganum</i>	Rough Blazing Star	0.50
<i>Monarda fistulosa</i>	Wild Bergamot	1.50
<i>Parthenium integrifolium</i>	Wild Quinine	1.00
<i>Penstemon digitalis</i>	Foxglove Beard Tongue	0.50
<i>Penstemon hispidus</i>	Hairy Beard Tongue	0.50
<i>Physostegia virginiana</i>	Common Mountain Mint	1.00
<i>Ratibida pinnata</i>	Yellow Coneflower	4.00
<i>Rudbeckia hirta</i>	Black-Eyed Susan	5.00
<i>Rudbeckia subtomentosa</i>	Sweet Black-Eyed Susan	1.00
<i>Siphium terribilinum</i>	Prairie Dock	5.00
<i>Solidago rigida</i>	Stiff Goldenrod	1.00
<i>Solidago speciosa</i>	Showy Goldenrod	0.50
<i>Tradescantia ohnensis</i>	Common Spiderwort	0.75
<i>Verbena stricta</i>	Hairy Vervain	1.00
<i>Vernonia spp.</i>	Ironweed (Various Mix)	1.75
<i>Veronicastrum virginianum</i>	Culvers Root	0.25
<i>Zizia aurea</i>	Golden Alexanders	0.75
	Total	66.25

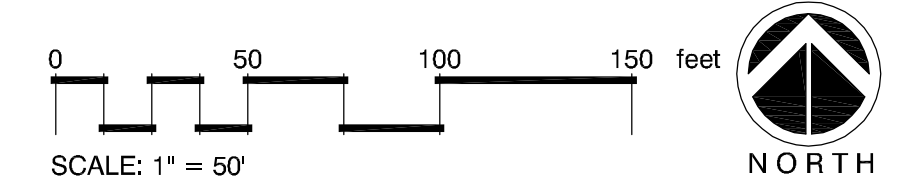
Scientific Name	Common Name	PLS Ounces/Acre
Temporary Cover:		
<i>Avena sativa</i>	Common Oat	360.00
<i>Lolium multiflorum</i>	Annual Rye	100.00
	Total	460.00
Permanent		
<i>Carex bebbii</i>	Bebbs Oval Sedge	2.50
<i>Carex hystericina</i>	Porcupine Sedge	2.00
<i>Carex lurida</i>	Bottlebrush Sedge	2.50
<i>Carex vulpinoidea</i>	Brown Fox Sedge	4.00
<i>Eleocharis acicularis</i>	Needle Spike Rush	1.00
<i>Eleocharis erythropoda</i>	Red-Rooted Spike Rush	2.00
<i>Elymus canadensis</i>	Canada Wild Rye	16.00
<i>Elymus virginicus</i>	Virginia Wild Rye	12.00
<i>Leersia oryzoides</i>	Rice Cut Grass	1.00
<i>Panicum virgatum</i>	Switch Grass	2.00
<i>Schizachyrium scoparium</i>	Little Bluestem	36.00
<i>Scirpus atrovirens</i>	Dark Green Rush	2.00
<i>Scirpus cyperinus</i>	Wool Grass	1.00
<i>Sorghastrum nutans</i>	Indian Grass	8.00
	Total	92.00
Forbs:		
<i>Allium cernuum</i>	Nodding Wild Onion	3.00
<i>Asclepias incarnata</i>	Swamp Milkweed	5.00
<i>Aster azureus</i>	Sky-Blue Aster	1.00
<i>Aster novae-angliae</i>	New England Aster	1.00
<i>Chamaecrista fasciculata</i>	Partridge Pea	5.00
<i>Coreopsis tripteris</i>	Tail Coreopsis	1.00
<i>Eryngium yuccifolium</i>	Rattlesnake Master	2.00
<i>Eupatorium maculatum</i>	Spotted Joe-Pye Weed	2.00
<i>Eupatorium perfoliatum</i>	Common Boneset	1.00
<i>Helianthus scaberrimus</i>	Sneezeweed	2.00
<i>Iris virginica</i>	Blue Flag	4.00
<i>Liatris spicata</i>	Marsh Blazing Star	1.00
<i>Lobelia cardinalis</i>	Cardinal Flower	0.50
<i>Lobelia siphilitica</i>	Great Blue Lobelia	1.00
<i>Lycopus americanus</i>	Common Water	0.25
<i>Monarda fistulosa</i>	Bergamot	2.50
<i>Penstemon digitalis</i>	Foxglove Beard Tongue	2.50
<i>Penstemon sedoides</i>	Ditch Stonecrop	0.50
<i>Physostegia virginiana</i>	Obedient Plant	4.00
<i>Pycnanthemum virginianum</i>	Common Mountain Mint	1.00
<i>Ratibida pinnata</i>	Yellow Coneflower	3.00
<i>Rudbeckia hirta</i>	Black-Eyed Susan	4.00
<i>Rudbeckia triloba</i>	Brown-Eyed Susan	1.00
<i>Senna hebecarpa</i>	Wild Senna	2.00
<i>Siphium terribilinum</i>	Prairie Dock	1.00
<i>Solidago graminifolia</i>	Grass Leaved Goldenrod	1.00
<i>Solidago rigida</i>	Riddell's Goldenrod	1.00
<i>Thalictrum dasycarpum</i>	Purple Meadow Rue	1.00
<i>Verbena hastata</i>	Blue Vervain	1.50
<i>Veronica fasciculata</i>	Common Ironweed	0.50
<i>Zizia aurea</i>	Golden Alexanders	0.50
	Total	60.75



1 TREE PLANTING DETAIL
NOT TO SCALE

LANDSCAPE NOTES:

- PLANT QUALITIES SHOWN IN THE PLANT SCHEDULE ARE FOR CONVENIENCE ONLY. THE CONTRACTOR IS RESPONSIBLE FOR PROVIDING AND INSTALLING ALL MATERIALS SHOWN ON THE PLAN AND SHOULD NOT RELY ON THE PLANT SCHEDULE FOR DETERMINING QUALITIES.
- ALL PLANT MATERIALS SHALL BE NURSERY GROWN STOCK AND SHALL BE FREE FROM ANY DEFORMITIES, DISEASES OR INSECT DAMAGE. ANY MATERIALS WITH DAMAGED OR CROOKED/DEFLECTED LEADERS, BARK ABRASION, SUNSCALD, INSECT DAMAGE, ETC. ARE NOT ACCEPTABLE AND WILL BE REJECTED. TREES WITH MULTIPLE LEADERS WILL BE REJECTED UNLESS CALLED OUT IN THE PLANT SCHEDULE AS MULTI-STEM.
- ALL LANDSCAPE IMPROVEMENTS SHALL MEET MUNICIPALITY REQUIREMENTS AND GUIDELINES, WHICH SHALL BE VERIFIED BY MUNICIPAL AUTHORITIES.
- ALL PLANTING OPERATIONS SHALL BE COMPLETED IN ACCORDANCE WITH STANDARD HORTICULTURAL PRACTICES. THIS MAY INCLUDE, BUT NOT BE LIMITED TO, PROPER PLANTING BED AND TREE PIT PREPARATION, PLANTING MIX, PRUNING, STAKING AND GUYING, WRAPPING, SPRAYING, FERTILIZATION, PLANTING AND ADEQUATE MAINTENANCE OF MATERIALS DURING CONSTRUCTION ACTIVITIES.
- ALL PLANT MATERIALS SHALL BE INSPECTED AND APPROVED BY THE LANDSCAPE ARCHITECT PRIOR TO INSTALLATION. ANY MATERIALS INSTALLED WITHOUT APPROVAL MAY BE REJECTED.
- THE CONTRACTOR SHALL GUARANTEE PLANT MATERIALS FOR A PERIOD OF ONE YEAR FROM DATE OF ACCEPTANCE BY OWNER. THE CONTRACTOR SHALL OUTLINE PROPER MAINTENANCE PROCEDURES TO THE OWNER AT THE TIME OF ACCEPTANCE. DURING THE GUARANTEE PERIOD, DEAD OR DISEASED MATERIALS SHALL BE REPLACED AT NO COST TO THE OWNER. AT THE END OF THE GUARANTEE PERIOD THE CONTRACTOR SHALL OBTAIN FINAL ACCEPTANCE FROM THE OWNER.
- ANY EXISTING TREES TO BE RETAINED SHALL BE PROTECTED FROM SOIL COMPACTION AND OTHER DAMAGES THAT MAY OCCUR DURING CONSTRUCTION ACTIVITIES BY ERECTING FENCING AROUND SUCH MATERIALS AT A DISTANCE OF 6.5' FROM THE TRUNK.
- ALL GRASS, CLUMPS, OTHER VEGETATION, DEBRIS, STONES, ETC., SHALL BE RAKED OR OTHERWISE REMOVED FROM PLANTING AND LAWN AREAS PRIOR TO INITIATION OF INSTALLATION PROCEDURES.
- ANY AREAS TO BE LOADED AND SEEDED WHICH HAVE NOT BEEN DISTURBED BY CONSTRUCTION ACTIVITIES SHALL RECEIVE 1'-2" OF LOAM OVER SCARIFIED EXISTING SOILS. CARE SHOULD BE GIVEN TO NOT PLACE GREATER THAN 1" SOIL OVER EXPOSED ROOTS OF EXISTING TREES IN SUCH AREAS.
- THE CONTRACTOR SHALL VERIFY THE LOCATIONS OF ALL UNDERGROUND UTILITIES PRIOR TO INITIATING PLANTING OPERATIONS. THE CONTRACTOR SHALL REPAIR/REPLACE AND UTILITY, PAVING, CURBING, ETC., WHICH IS DAMAGED DURING PLANTING OPERATIONS.
- SIZE AND GRADING STANDARDS OF PLANT MATERIALS SHALL CONFORM TO THE LATEST EDITION OF ANSI Z60.1, AMERICAN STANDARDS FOR NURSERY STOCK, BY THE AMERICAN NURSERY & LANDSCAPE ASSOCIATION.
- REFER TO PLAT OF SURVEY FOR LEGAL DESCRIPTION, BOUNDARY DIMENSIONS AND EXISTING CONDITIONS.
- REFER TO ARCHITECTURAL PLANS FOR BUILDING SIZES AND FOOTPRINTS.
- REFER TO ENGINEERING PLANS FOR DETENTION CALCULATIONS, UTILITY LOCATIONS, TOPOGRAPHIC INFORMATION AND THE LIKE.
- ALL PLANT MATERIAL ON THIS PLANTING PLAN REPRESENTS THE INTENTION AND INTENSITY OF THE PROPOSED LANDSCAPE MATERIAL. THE EXACT SPECIES AND LOCATIONS MAY VARY IN THE FIELD DUE TO MODIFICATIONS IN THE SITE IMPROVEMENTS AND THE AVAILABILITY OF PLANT MATERIAL AT THE TIME OF INSTALLATION. ANY SUCH CHANGES MUST FIRST BE APPROVED BY THE VILLAGE IN WRITING.
- ALL PLANT MATERIAL SHALL BE PLANTED WITH A MINIMUM OF SIX INCHES OF ORGANIC SOIL AND MULCHED WITH A SHREDDED BARK MATERIAL TO A MINIMUM 3" DEPTH.
- ALL BEDS SHALL BE EDGED, HAVE WEED PREEMERGENTS APPLIED AT THE RECOMMENDED RATE.
- ALL PARKWAYS AND PARKING LOT ISLANDS SHALL HAVE SOIL AS A GROUNDCOVER, UNLESS OTHERWISE NOTED.
- ALL LAWN AREAS ON THIS PLAN SHALL BE GRADED SMOOTH AND TOPPED WITH AT LEAST 4" OF TOPSOIL. ALL LAWN AREAS TO BE ESTABLISHED USING SOIL UNLESS OTHERWISE NOTED.
- THIS LANDSCAPE PLAN ASSUMES THE SITE WILL BE PREPARED WITH TOP SOIL SUITABLE FOR THE ESTABLISHMENT OF THE LANDSCAPE MATERIAL. PRESENTED ON THIS PLAN, IF ADDITIONAL TOP SOIL IS REQUIRED IT IS UP TO THE LANDSCAPE CONTRACTOR ON THE PROJECT TO PROVIDE, SPREAD AND PREPARE THE SITE AS NEEDED FOR THE IMPLEMENTATION OF THIS LANDSCAPE PLAN.
- CONTRACTORS MUST VERIFY ALL QUANTITIES AND OBTAIN ALL PROPER PERMITS AND LICENSES FROM THE PROPER AUTHORITIES.
- ALL MATERIAL MUST MEET INDUSTRY STANDARDS AND THE LANDSCAPE ARCHITECT HAS THE RIGHT TO REFUSE ANY POOR MATERIAL OR WORKMANSHIP.
- LANDSCAPE ARCHITECT IS NOT RESPONSIBLE FOR UNSEEN SITE CONDITIONS.
- ALL PLANTINGS SHALL BE SPACED EQUAL DISTANT, BACK FILLED WITH AMENDED SOIL IN A HOLE TWICE THE ROOTBALL DIAMETER, WATERED, FERTILIZED, PRUNED, AND HAVE ALL TAGS AND ROPES REMOVED.
- ALL BEDS TO BE BERMED 12" TO 24" ABOVE GRADE AND MEET DRAINAGE REQUIREMENTS.
- LAWN AND BED AREAS SHALL BE ROTOTILLED, RAKED OF CLUMPS AND DEBRIS.



© 2015 Copyright. This Drawing is the Property of John G. Schiera, Landscape Architects, Inc. All Rights Reserved.

PREPARED FOR:
Vrdolyak

LOCATION:
Orland Park, IL

DATE:
2-16-2015

SCALE:
1" = 40'

COMPUTER NAME:
Base

JOB NUMBER:
55G_31_2015