

LEGEND:

- PL PROPERTY LINE
- EXISTING TREE TO BE PROTECTED
- DECIDUOUS TREE
- EVERGREEN TREE
- DECIDUOUS TREE
- EVERGREEN TREE
- DECIDUOUS SHRUBS
- EVERGREEN SHRUBS
- ORNAMENTAL GRASSES
- PERENNIAL AREAS
- 3" MULCH BED
- BIKERACK
- ORNAMENTAL FENCE & MASONRY COLUMNS (MATCH EXISTING)
- PLANT CODE
- QUANTITY

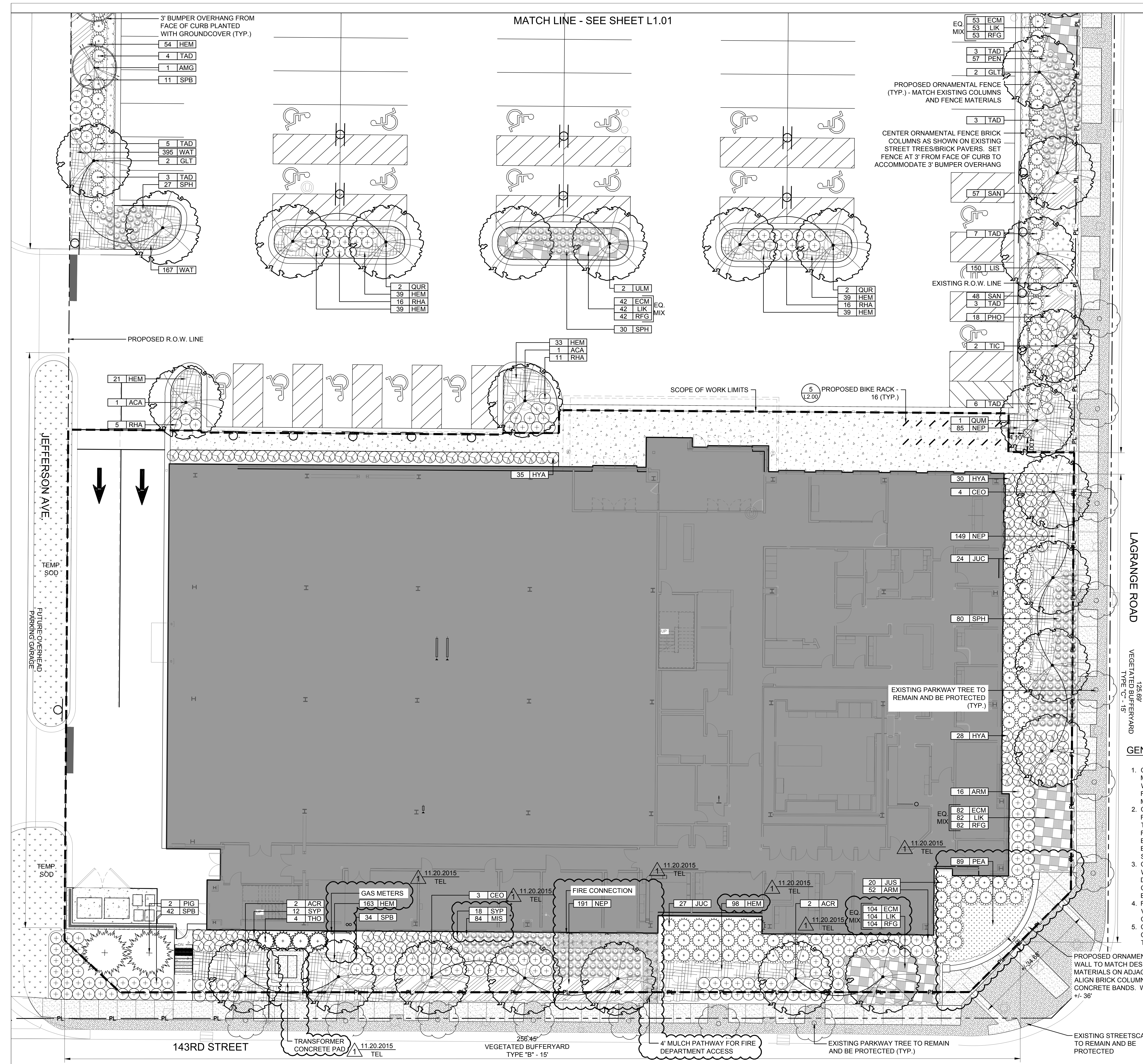
LAGRANGE ROAD
126.69'
VEGETATED BUFFERYARD
TYPE "C" - 15'

GENERAL NOTES:

- CONTRACTOR SHALL PROVIDE ORNAMENTAL FENCING, MASONRY COLUMNS, BRICK PAVERS, AND MONUMENT WALL/PLANTER TO MATCH EXISTING STREETSCAPE FURNISHINGS INCLUDING SCALE, COLOR, QUALITY, AND MATERIALS.
- CONTRACTOR SHALL PREPARE COMPLETE SHOP DRAWINGS FOR ALL DESIGN ELEMENTS FOR REVIEW AND APPROVAL BY THE ARCHITECT PRIOR TO COMMENCEMENT OF ANY FABRICATION OR CONSTRUCTION. THE CONTRACTOR SHALL BE RESPONSIBLE FOR CONNECTION DETAILS BETWEEN EXISTING AND PROPOSED FENCING, AND CONNECTIONS SHOULD BE DETAILED IN THE SHOP DRAWING SUBMITTAL.
- CONTRACTOR SHALL COORDINATE FINAL LIMITS OF WORK/IMPROVEMENTS WITH DESIGN TEAM. ANY DISCREPANCIES IN LIMITS OF IMPROVEMENTS SHALL BE COORDINATED WITH THE ARCHITECT PRIOR TO ANY WORK BEING COMPLETED.
- FINAL LOCATION OF STREETSCAPE ELEMENTS TO BE VERIFIED IN FIELD WITH ARCHITECT PRIOR TO CONSTRUCTION.
- CONTRACTOR SHALL BE RESPONSIBLE FOR ANY DAMAGE CAUSED TO EXISTING STREETSCAPE ELEMENTS SCHEDULED TO REMAIN.

PROPOSED ORNAMENTAL WALL - WALL TO MATCH DESIGN AND MATERIALS ON ADJACENT CORNERS. ALIGN BRICK COLUMNS WITH EXISTING CONCRETE BANDS. WIDTH OF WALL +/- 3/8"

EXISTING STREETSCAPE TO REMAIN AND BE PROTECTED



Stamp

BOARD APPROVED

Case No: 2014-0724
Date: 3/21/16
W/Conditions:
W/Out Conditions:

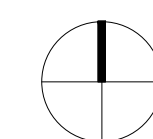
VILLAGE OF ORLAND PARK

Revisions No.	Description	Date
1	CCA#3	11/20/15

Drawing Title
LANDSCAPE PLAN - SOUTH

Job Number 34013-00 Drawing No. L1.00
Drawn by TEL
Checked WGS
Date 11/20/2015
Scale

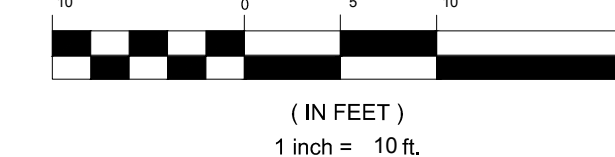
Revisions	No.	Description	Date
	1	CCA#3	11/20/15



AREA NOT INCLUDED

EXISTING PARKWAY TREE TO REMAIN AND BE PROTECTED (TYP.)

GRAPHIC SCALE



LIMITS OF PROPOSED ASPHALT PARKING LOT

PROPOSED ORNAMENTAL FENCE (TYP.) - TIE INTO EXISTING FENCE AND MATCH EXISTING COLUMNS AND FENCING MATERIALS

CENTER ORNAMENTAL FENCE BRICK COLUMNS AS SHOWN ON EXISTING STREET TREES/BRICK PAVERS. SET FENCE AT 3' FROM FACE OF CURB TO ACCOMMODATE 3' BUMPER OVERHANG

3' BUMPER OVERHANG FROM FACE OF CURB PLANTED WITH GROUNDCOVER (TYP.)

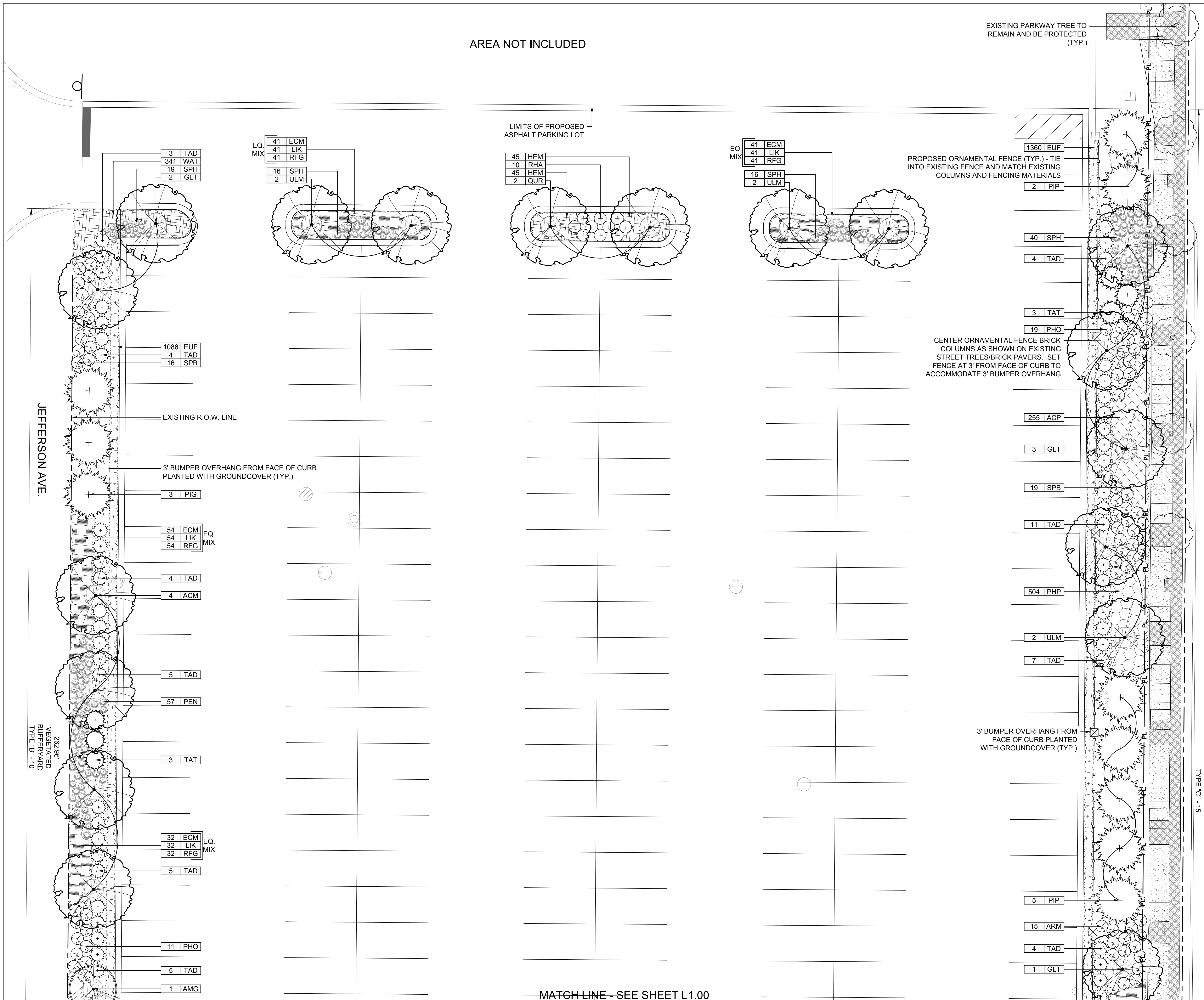
MATCH LINE - SEE SHEET L1.00

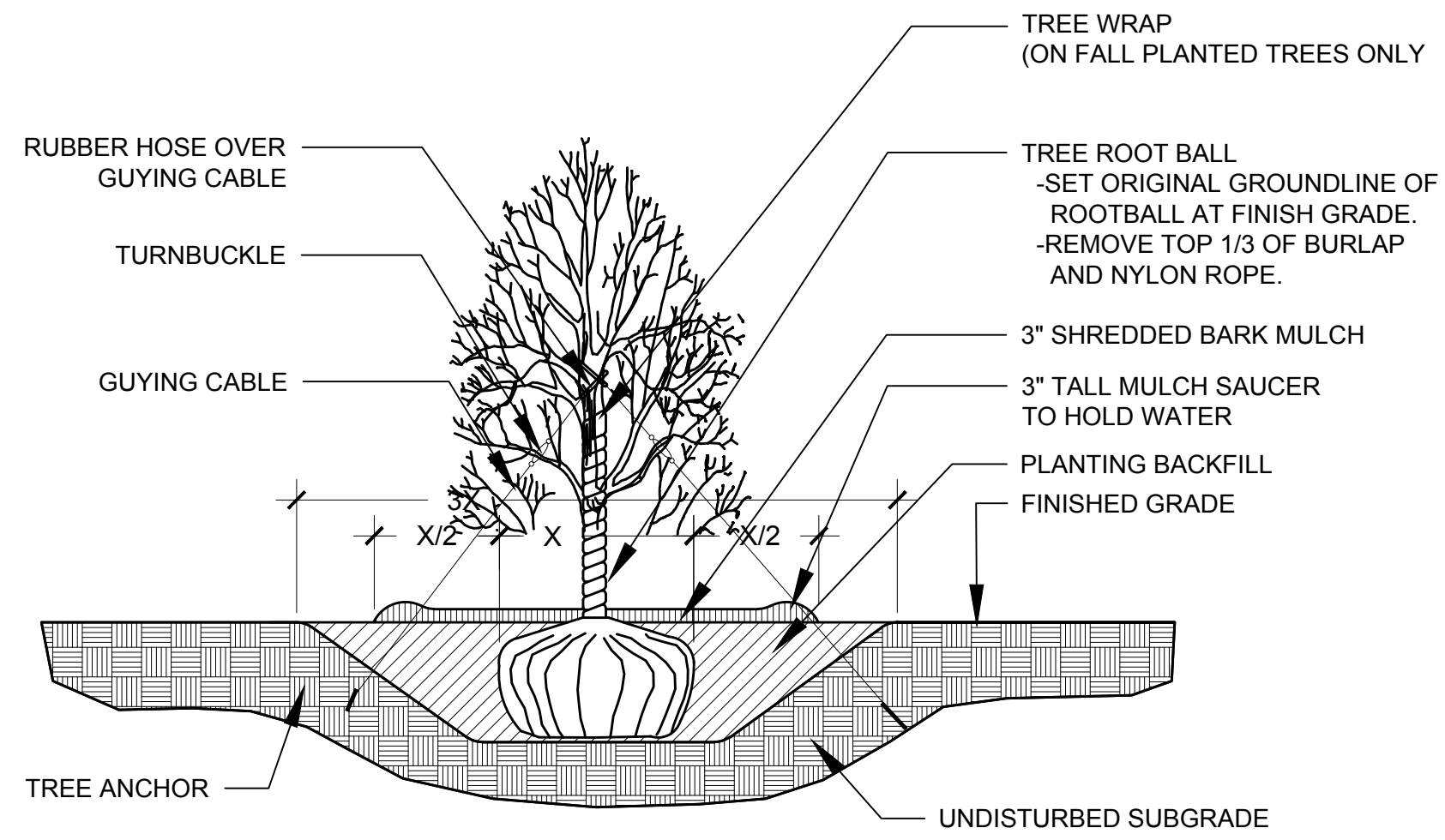
LEGEND:

- PL PROPERTY LINE
- EXISTING TREE TO BE PROTECTED
- DECIDUOUS TREE
- EVERGREEN TREE
- DECIDUOUS TREE
- EVERGREEN TREE
- DECIDUOUS SHRUBS
- EVERGREEN SHRUBS
- ORNAMENTAL GRASSES
- PERENNIAL AREAS
- 3" MULCH BED
- BIKERACK
- ORNAMENTAL FENCE & MASONRY COLUMNS (MATCH EXISTING)
- PLANT CODE
34 DEF
QUANTITY

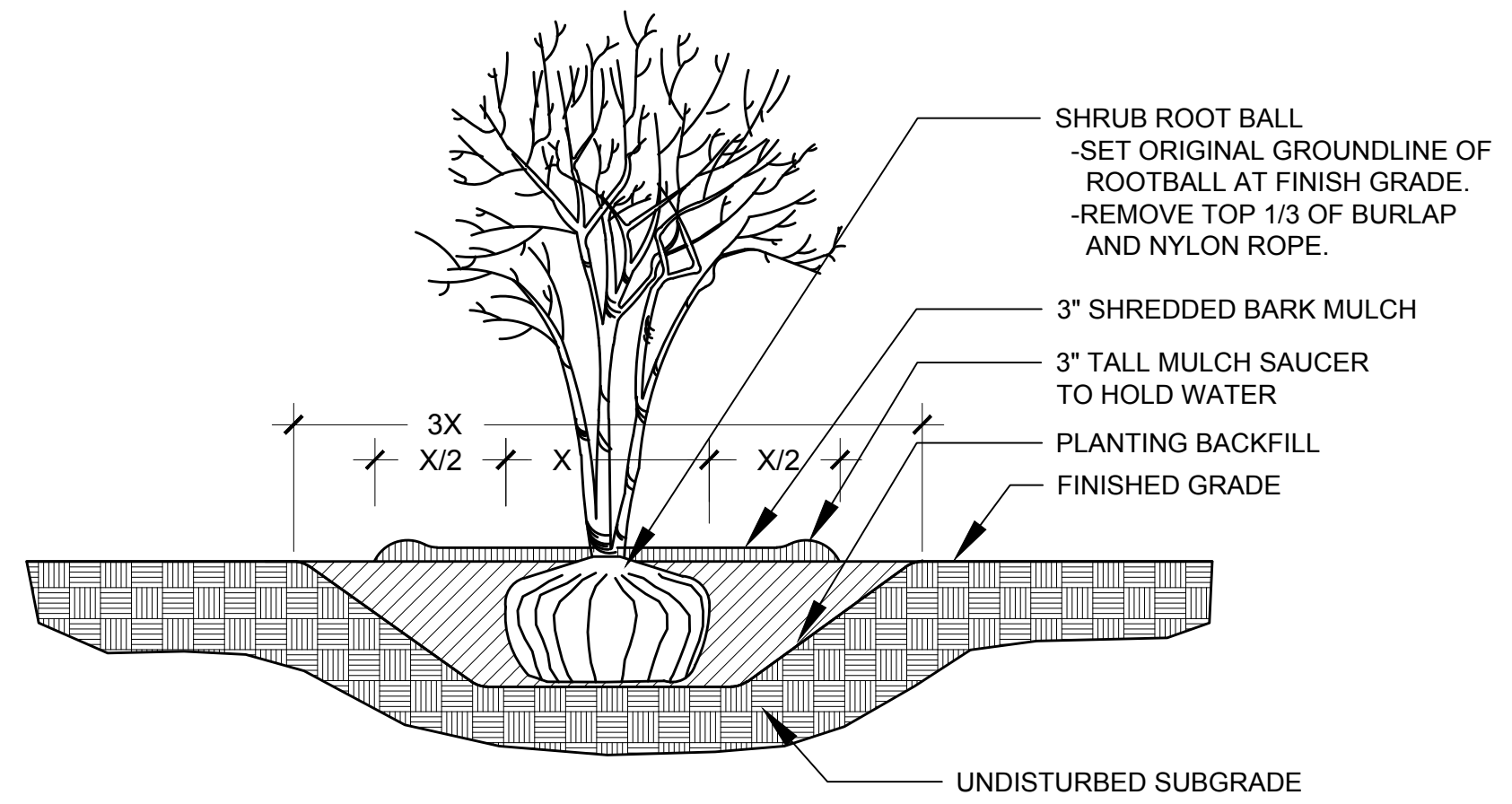
GENERAL NOTES:

1. CONTRACTOR SHALL PROVIDE ORNAMENTAL FENCING, MASONRY COLUMNS, BRICK PAVERS, AND MONUMENT WALL/PLANTER TO MATCH EXISTING STREETSCAPE FURNISHINGS INCLUDING SCALE, COLOR, QUALITY, AND MATERIALS.
2. CONTRACTOR SHALL PREPARE COMPLETE SHOP DRAWINGS FOR ALL DESIGN ELEMENTS FOR REVIEW AND APPROVAL BY THE ARCHITECT PRIOR TO COMMENCEMENT OF ANY FABRICATION OR CONSTRUCTION. THE CONTRACTOR SHALL BE RESPONSIBLE FOR CONNECTION DETAILS BETWEEN EXISTING AND PROPOSED FENCING, AND CONNECTIONS SHOULD BE DETAILED IN THE SHOP DRAWING SUBMITTAL.
3. CONTRACTOR SHALL COORDINATE FINAL LIMITS OF WORK/IMPROVEMENTS WITH DESIGN TEAM. ANY DISCREPANCIES IN LIMITS OF IMPROVEMENTS SHALL BE COORDINATED WITH THE ARCHITECT PRIOR TO ANY WORK BEING COMPLETED.
4. FINAL LOCATION OF STREETSCAPE ELEMENTS TO BE VERIFIED IN FIELD WITH ARCHITECT PRIOR TO CONSTRUCTION.
5. CONTRACTOR SHALL BE RESPONSIBLE FOR ANY DAMAGE CAUSED TO EXISTING STREETSCAPE ELEMENTS SCHEDULED TO REMAIN.

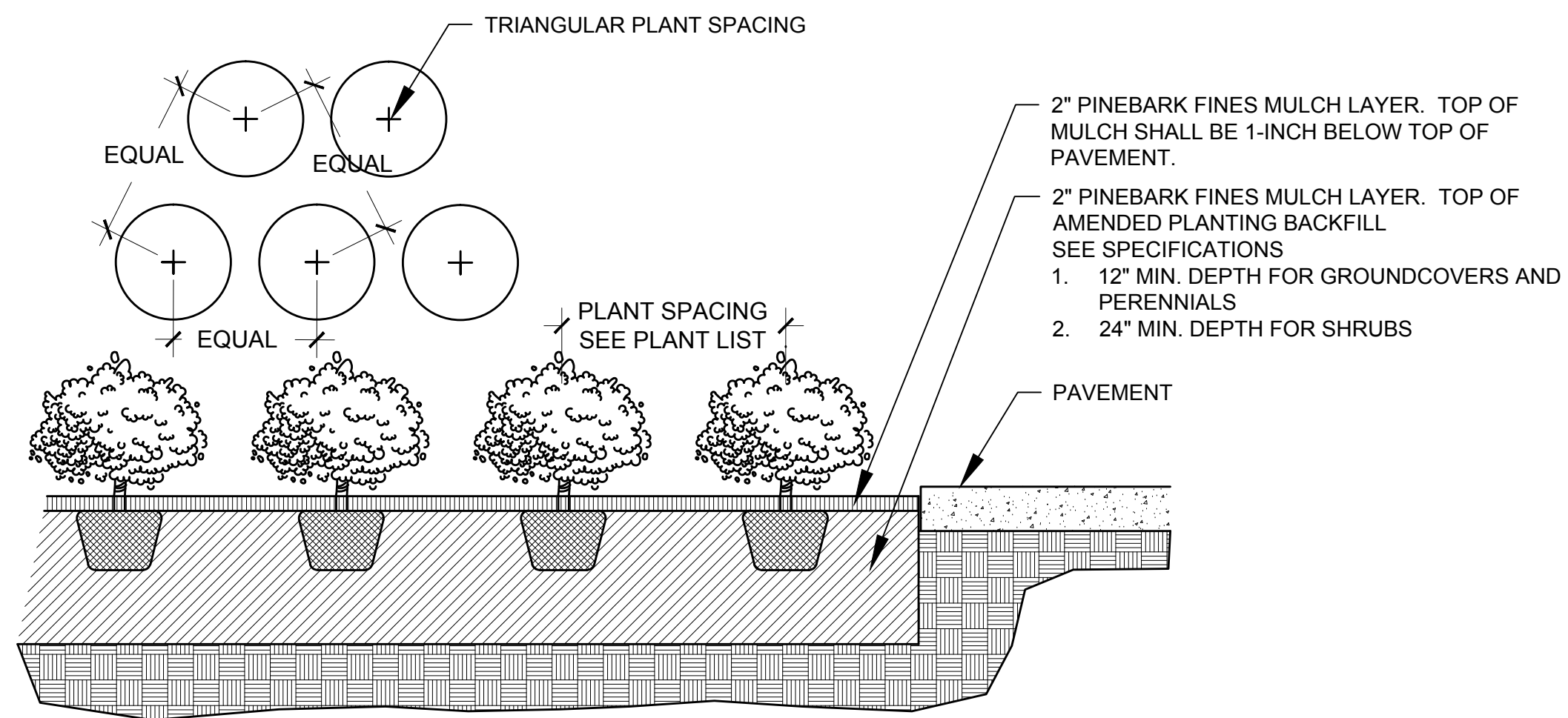




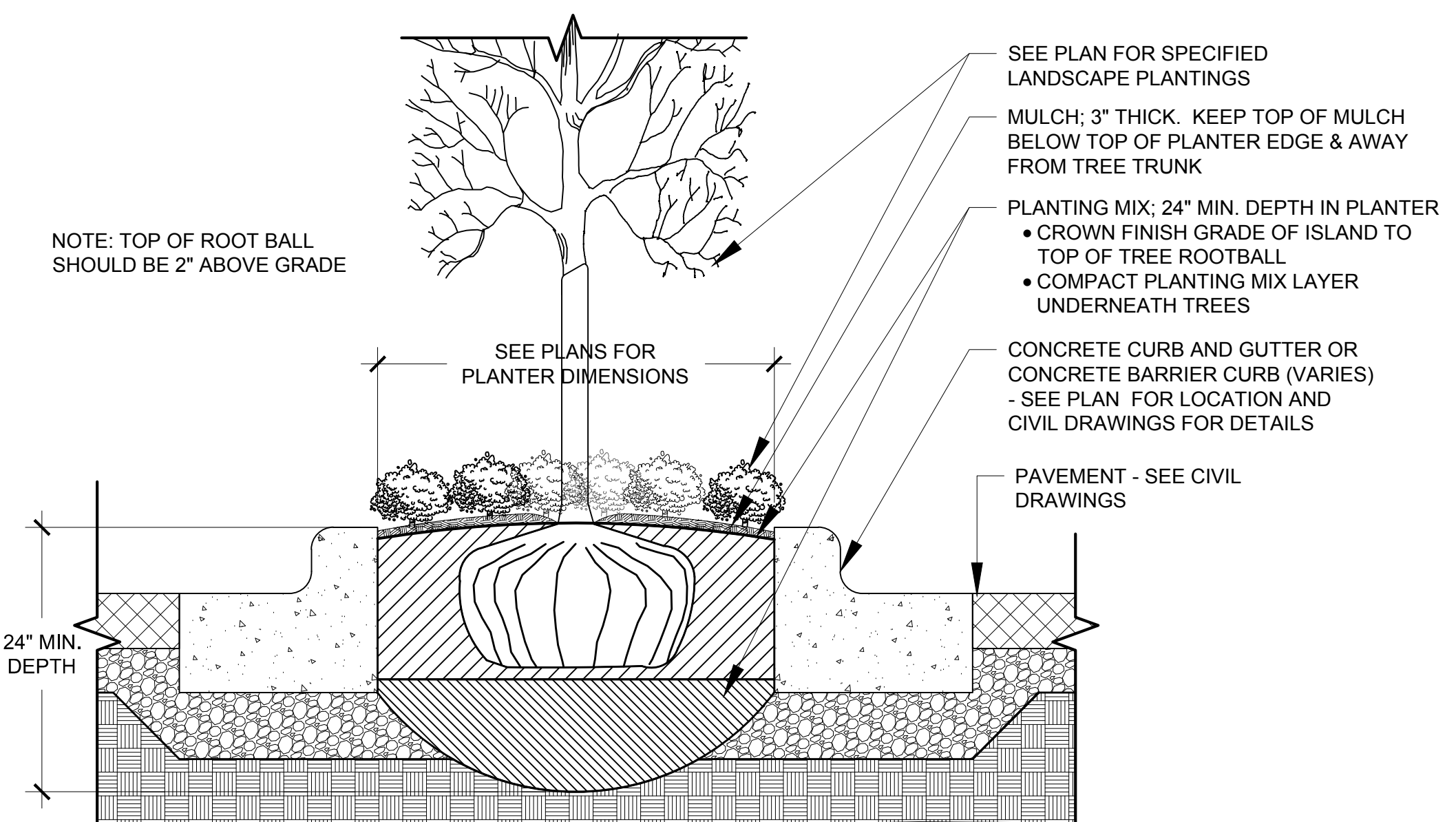
1 SHADE TREE PLANTING DETAIL
NTS



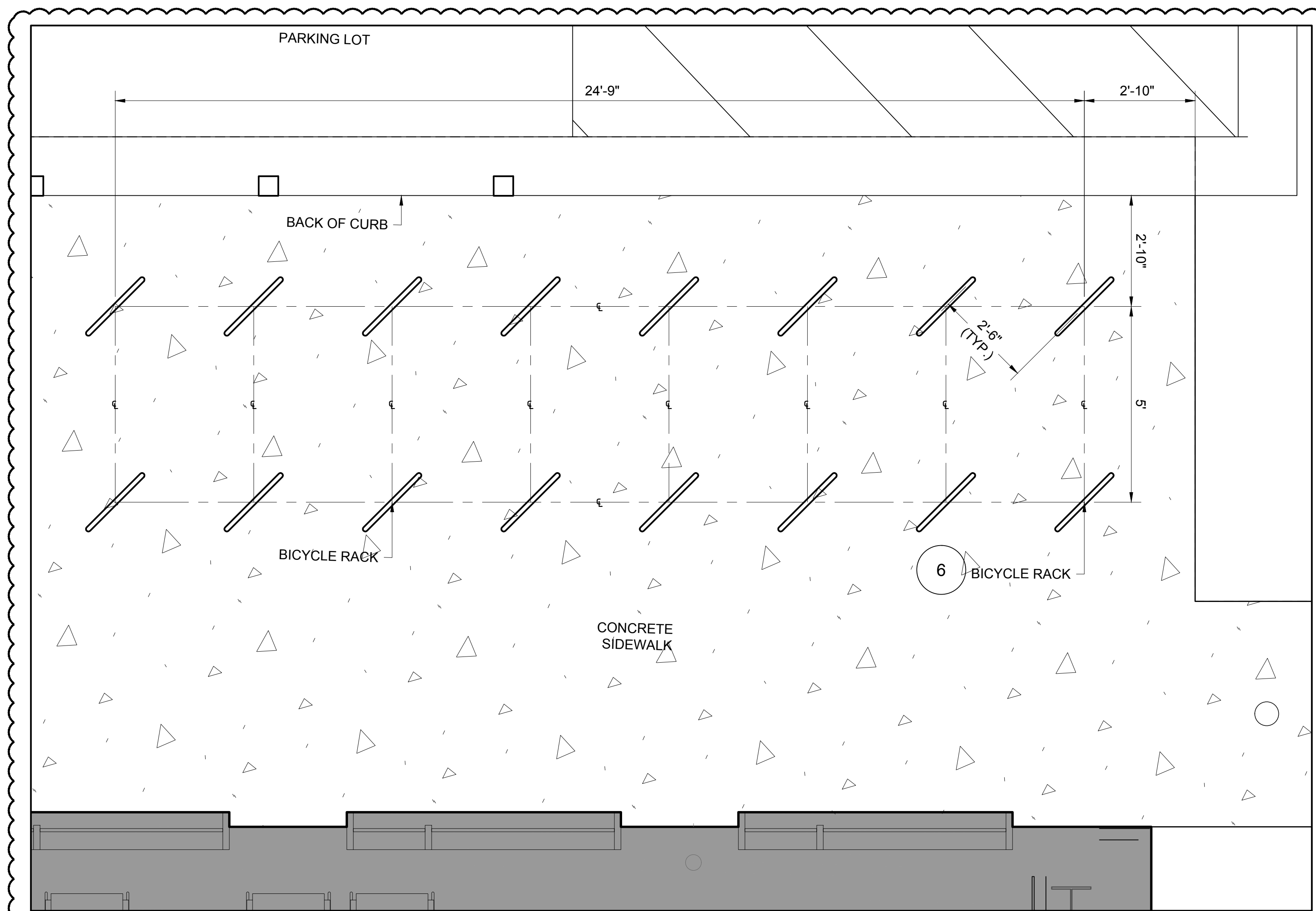
2 SHRUB AND ORNAMENTAL TREE PLANTING DETAIL
NTS



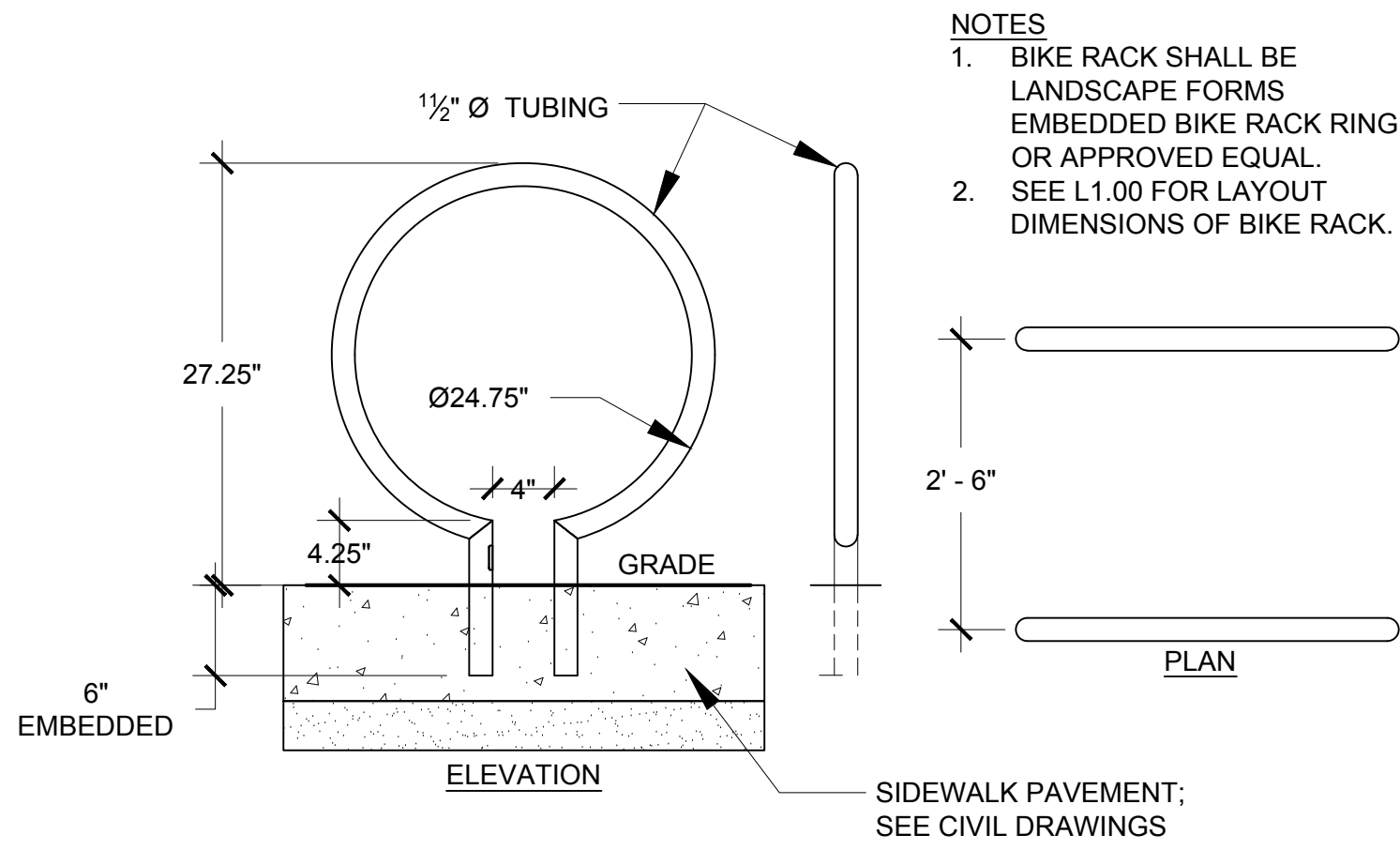
3 GROUNDCOVER / PERENNIAL PLANTING DETAIL
NTS



4 PLANTING DETAIL - PARKING LOT ISLAND
NTS



5 BICYCLE RACK LAYOUT
SCALE: NTS



6 BICYCLE RACK DETAIL
SCALE: 1\"/>

NOTES
1. BIKE RACK SHALL BE LANDSCAPE FORMS EMBEDDED BIKE RACK RING OR APPROVED EQUAL.
2. SEE L1.00 FOR LAYOUT DIMENSIONS OF BIKE RACK.

Plant Schedule

UCM Orland Park Ambulatory Center
Date: October 30, 2015

Qty.	Key	Botanical name	Common name	Size	Notes
SHADE TREES					
2	ACA	Acer freemanii 'Jeffersred'	Autumn Blaze Maple	2 5' cal.	B&B
4	ACM	Acer freemanii 'Marmo'	Marmo Freeman Maple	2 5' cal.	B&B
4	ACR	Acer rubrum 'October Glory'	Red Maple	2 5' cal.	B&B
7	CEO	Celtis occidentalis 'ChicagoLand'	ChicagoLand Common Hackberry	2 5' cal.	B&B
10	OLT	Quercus macrocarpa 'Skyline'	Skyline Thorems Honeylocust	2 5' cal.	B&B
1	QUM	Quercus macrocarpa	Bur Oak	2 5' cal.	B&B
6	QUR	Quercus rubrum	Red Oak	2 5' cal.	B&B
2	TIC	Tilia cordata 'Greenspire'	Greenspire Littleleaf Linden	2 5' cal.	B&B
8	ULM	Ulmus x 'Morton'	Morton Hybrid Elm	2 5' cal.	B&B
ORNAMENTAL TREES					
2	AMG	Amelanchier x grandiflora 'Autumn Brilliance'	Autumn Brilliance Apple Serviceberry	8' Ht.	B&B multi-stem
EVERGREEN TREES					
5	PIG	Picea glauca var. densata	Black Hills Spruce	8' Ht.	B&B
7	PIP	Picea pungens 'Glaucal'	Colorado Blue Spruce	8' Ht.	B&B
DECIDUOUS SHRUBS					
83	ARM	Aronia melanocarpa	Black Chokeberry	#5 Container	
93	HYA	Hydrangea arborescens 'Annabelle'	Annabelle Hydrangea	#5 Container	
48	PHO	Physocarpus opulifolius 'Little Devil'	Little Devil Ninebark	24" Ht.	B&B
58	RHA	Rhus aromatica 'Gro-Low'	Gro-Low Fragrant Sumac	24" Ht.	B&B
122	SPB	Spiraea x buxifolia 'Froebelii'	Froebel Spirea	#5 Container	
65	SYP	Syringa patula 'Miss Kim'	Miss Kim Dwarf Lilac	24" Ht.	B&B
EVERGREEN SHRUBS					
51	JUC	Juniperus chinensis 'Pfitzerana Kallays Compact'	Kallays Compact Pfitzer Chinese Juniper	#5 Container	
20	JUS	Juniperus chinensis 'Sea Green'	Sea Green Juniper	#5 Container	
4	RHO	Rhododendron 'P.J.M.'	P.J.M. Rhododendron	#5 Container	
86	TAD	Taxus x media 'Densiformis'	Densiform Yew	24" Ht.	B&B
6	TAT	Taxus x media 'Taurin'	Taurin Yew	24" Ht.	B&B
4	THO	Thuja occidentalis 'Techny'	Techny (Mission) American Arborvitae	5' Ht.	B&B
PERENNIALS					
255	ACP	Achillea millefolium 'Paprika'	Paprika Yarrow	#1 Container	12" o.c.
449	ECM	Echinacea purpurea 'Magnus'	Magnus Purple Coneflower	#1 Container	12" o.c.
615	HEM	Hemerocallis Mix			
		Hemerocallis 'Fairy Tale'	Pink Daylily	#1 Container	18" o.c. - Equal Mix
		Hemerocallis 'Stella de Oro'	Yellow Daylily	#1 Container	18" o.c. - Equal Mix
		Hemerocallis 'Summer Wine'	Purple Daylily	#1 Container	18" o.c. - Equal Mix
449	LK	Liatris spicata 'Kobold'	Kobold Gayfeather	#1 Container	12" o.c.
425	NEP	Nepeta racemosa 'Walker's Low'	Walker's Low Catmint	#1 Container	18" o.c.
89	PEA	Perovskia atriplicifolia	Russian Sage	#1 Container	18" o.c.
449	RFG	Rudbeckia fulgida 'Goldsturm'	Black Eyed Susan	#1 Container	12" o.c.
105	SAN	Savia nemorosa 'May Night'	Purple Sage	#1 Container	18" o.c.
ORNAMENTAL GRASSES					
84	MIS	Miscanthus sinensis 'Purpureus'	Purple Maiden Grass	#3 Container	
114	PEN	Pennisetum alopecuroides 'Harmel'	Harmel Dwarf Fountain Grass	#3 Container	
228	SPH	Sporobolus heterolepis	Prairie Dropseed	#3 Container	
GROUNDCOVER AND VINES					
2446	EUF	Euonymus fortunei 'Coloratus'	Purpleleaf Wintercreeper	Flat	8" o.c.
150	LIS	Liriodendron spicata	Creeping Lilyturf	#1 Container	12" o.c.
504	PHP	Phlox subulata 'Emerald Pink'	Pink Creeping Phlox	Flat	8" o.c.
903	WAT	Waldsteinia temata	Barren Strawberry	Flat	8" o.c.

A. In the event of discrepancy in plant quantities between plan and Plant Schedule, larger quantity shall be provided and installed.
B. All plant materials shall be specimen quality. Trees shall be matched specimens from same nursery block.
C. All plant materials shall be B&B unless otherwise noted. Bare root plant materials will not be accepted.
D. Shrubs on a single stem shall not be accepted. All shrubs shall be multi-stem, heavily branched and symmetrically shaped.
E. Perennials planted as part of a "mix" shall be clustered in groups of 3-5 plants.

Assoc Architect	Johnson & Lee, Ltd. One East 8th Street, Suite 200 Chicago, IL 60605 Tel: (312) 663-0225 Fax: (312) 663-4491
Structural	Rubinos & Mesa Engineers, Inc. 200 S. Michigan Avenue, Suite 1500 Chicago, IL 60604 Tel: (312) 870-6600 Fax: (312) 663-1473
MEP	BR+AMEPIS 180 North Stetson Avenue, Suite 1500 Chicago, Illinois 60601 Tel: (312) 279-1181 Fax: (312) 279-1186
Civil	Spartaco, Inc. 9575 W. Higgins Road, Suite 700 Rosemont, IL 60018 Tel: (847) 696-4060 Fax: (847) 696-4055
Landscape	TERRA Engineering, Ltd. 225 W. Ohio Street, 4th Floor Chicago, IL 60654 Tel: (312) 467-0123 Fax: (312) 467-0220
Cost	CCS International, Inc. 1815 South Meyers Road, Suite 200 Oakbrook Terrace, IL 60181 Tel: (630) 678-0808 Fax: (630) 678-0858

Stamp

BOARD APPROVED

Case No: 2014-0724

Date: 3/21/16

W/Conditions:

W/Out Conditions: x

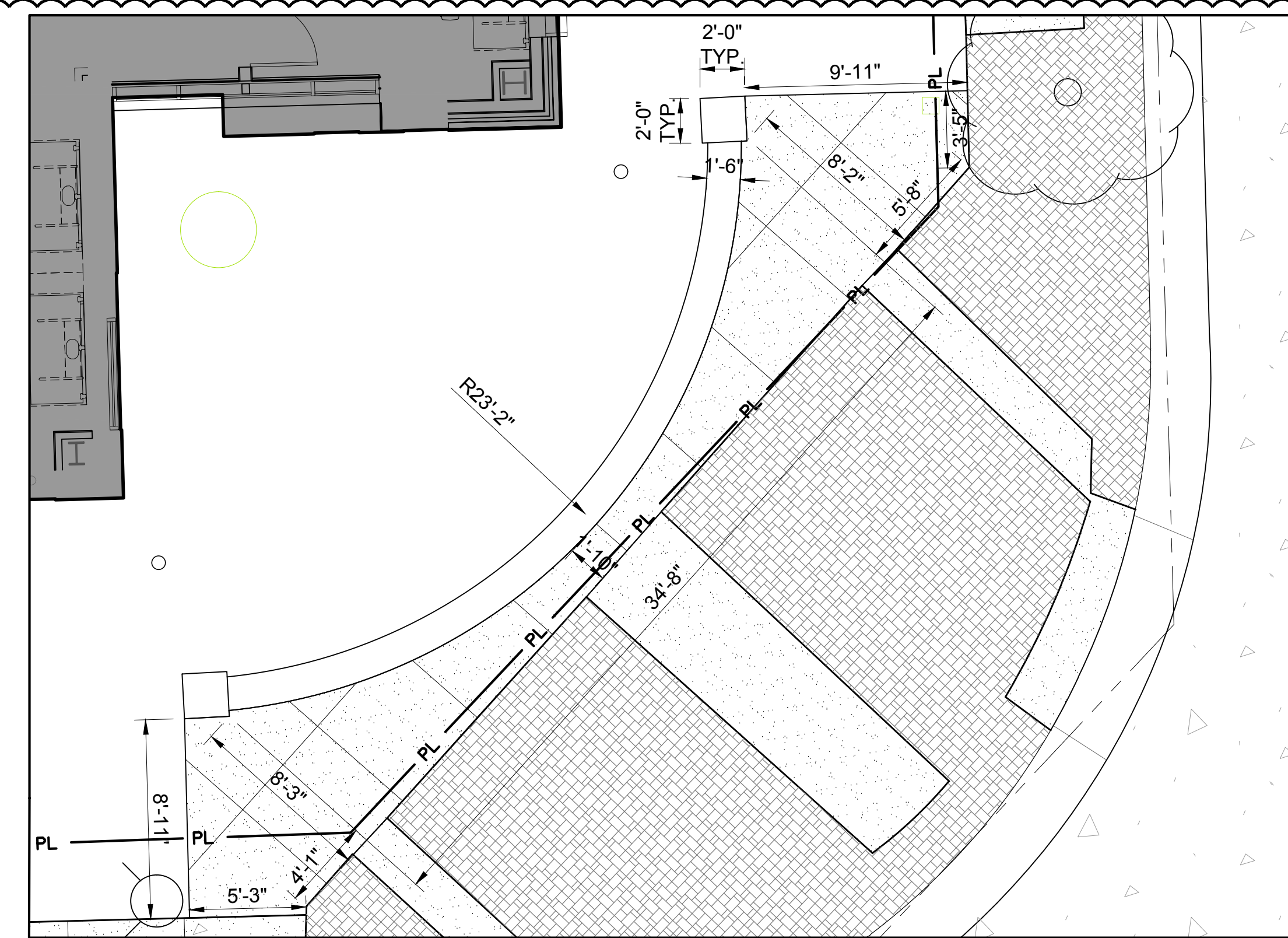
VILLAGE OF ORLAND PARK

Revisions	No.	Description	Date
	1	CCA#3	11/20/15

Drawing Title
LANDSCAPE DETAILS &
PLANT LIST

Job Number 34013-00 Drawing No.
Drawn by TEL
Checked WGS
Date 11/20/2015
Scale L2.00

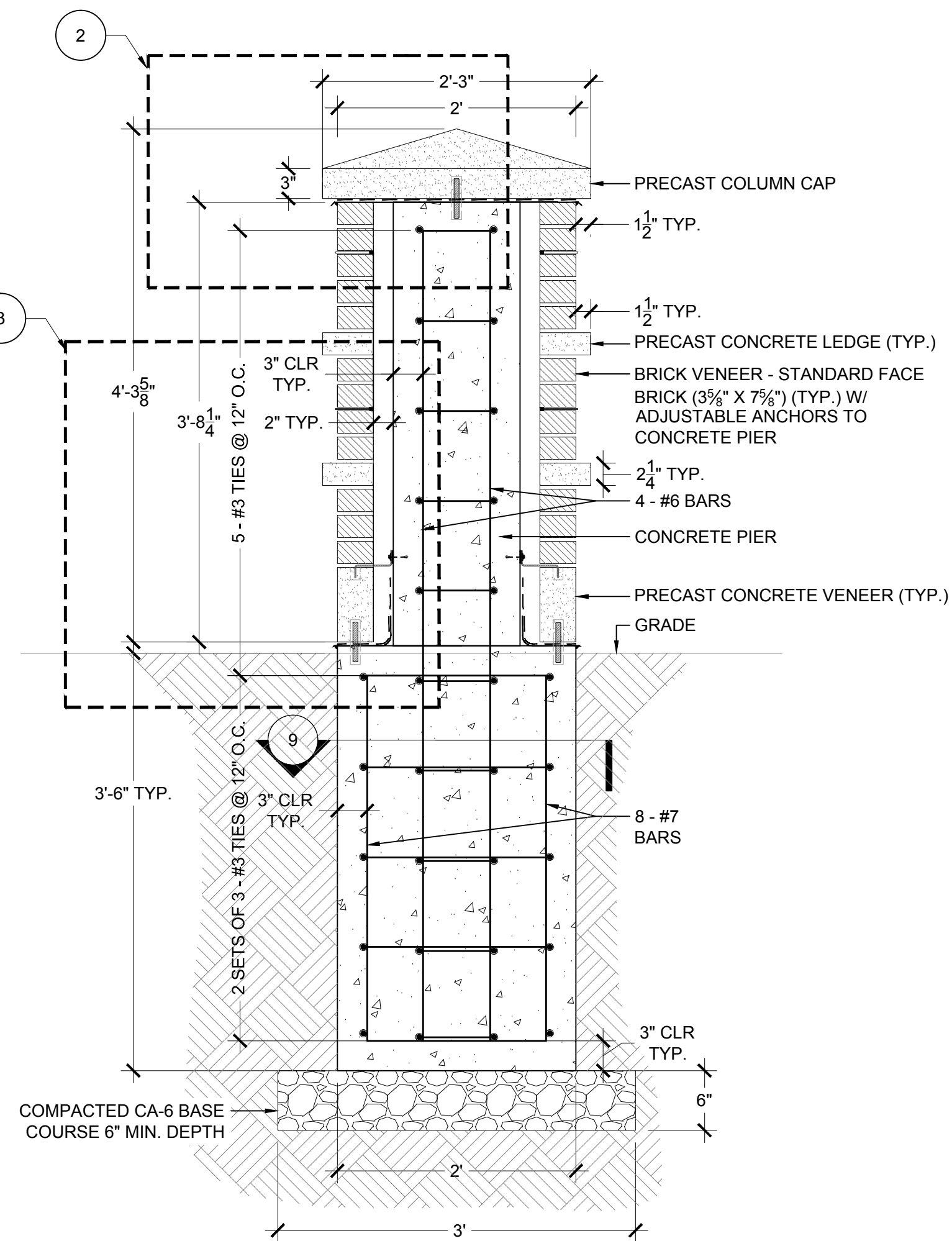
Assoc Architect	Johnson & Lee, Ltd. One East 8th Street, Suite 200 Chicago, IL 60605 Tel: (312) 663-0225 Fax: (312) 663-4491
Structural	Rubinos & Mesa Engineers, Inc. 200 S. Michigan Avenue, Suite 1500 Chicago, IL 60604 Tel: (312) 870-6600 Fax: (312) 663-1473
MEP	BR+A+MEPIS 180 North Stetson Avenue, Suite 1500 Chicago, Illinois 60601 Tel: (312) 279-1181 Fax: (312) 279-1186
Civil	Spaceco, Inc. 9575 W. Higgins Road, Suite 700 Rosemont, IL 60018 Tel: (847) 696-0060 Fax: (847) 696-4065
Landscape	TERRA Engineering, Ltd. 225 W. Ohio Street, 4th Floor Chicago, IL 60654 Tel: (312) 467-0123 Fax: (312) 467-0220
Cost	CCS International, Inc. 1815 South Meyers Road, Suite 200 Oakbrook Terrace, IL 60181 Tel: (630) 678-0808 Fax: (630) 678-0858



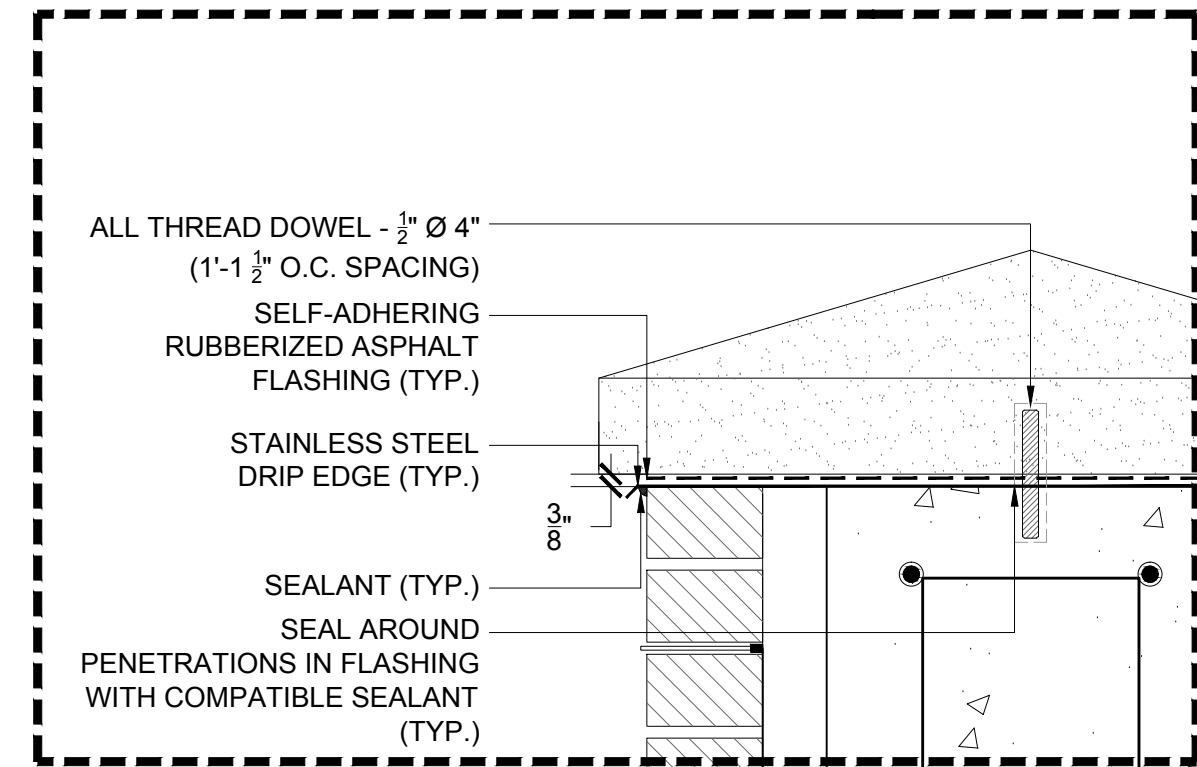
10 SEAT WALL DIMENSION AND LAYOUT
NTS

GENERAL NOTES:

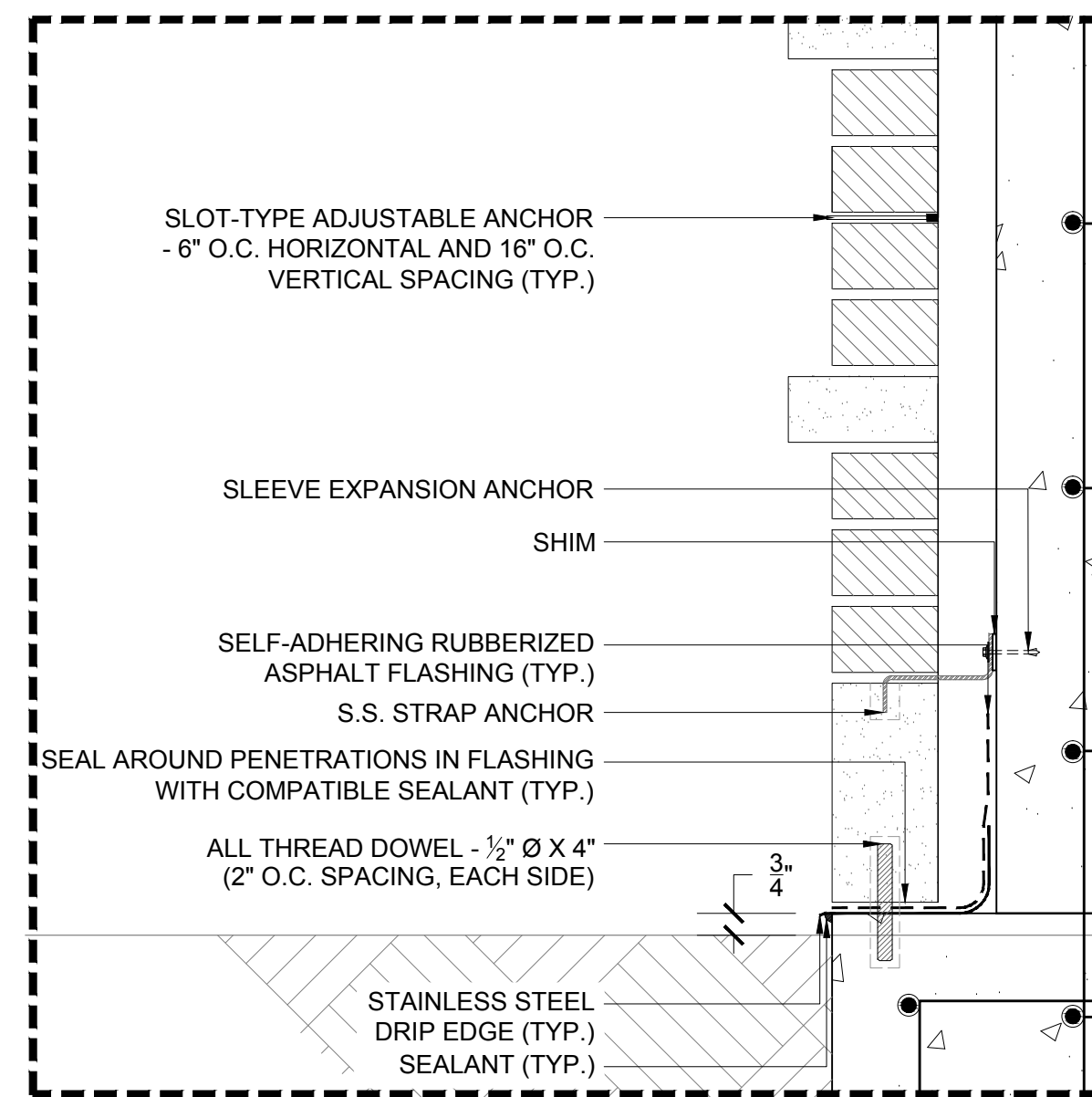
1. FACE BRICK AND PRECAST CONCRETE TO MATCH COLORS OF EXISTING LAGRANGE ROAD CORNER MONUMENTS.



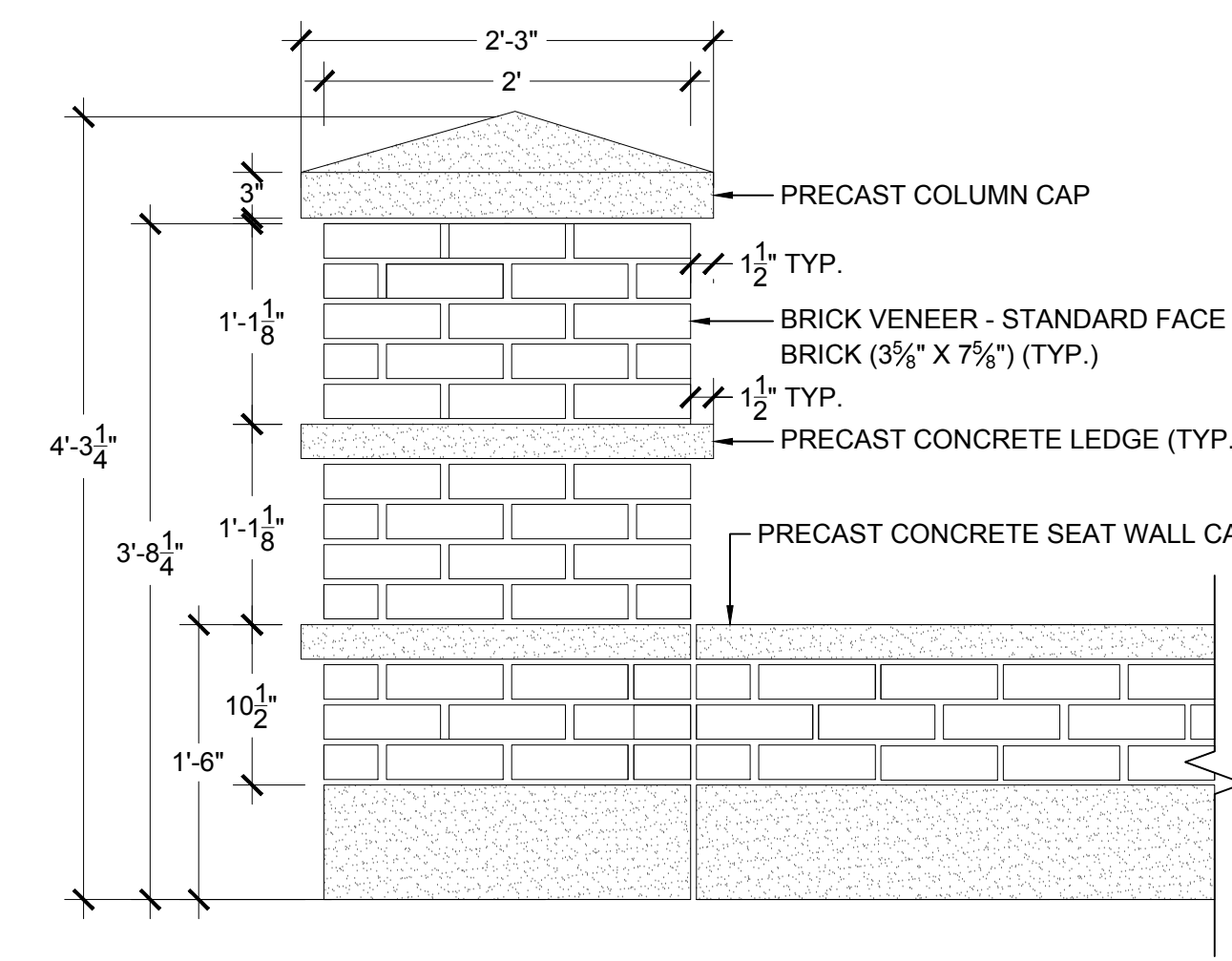
1 COLUMN SECTION
SCALE: 1" = 1'-0"



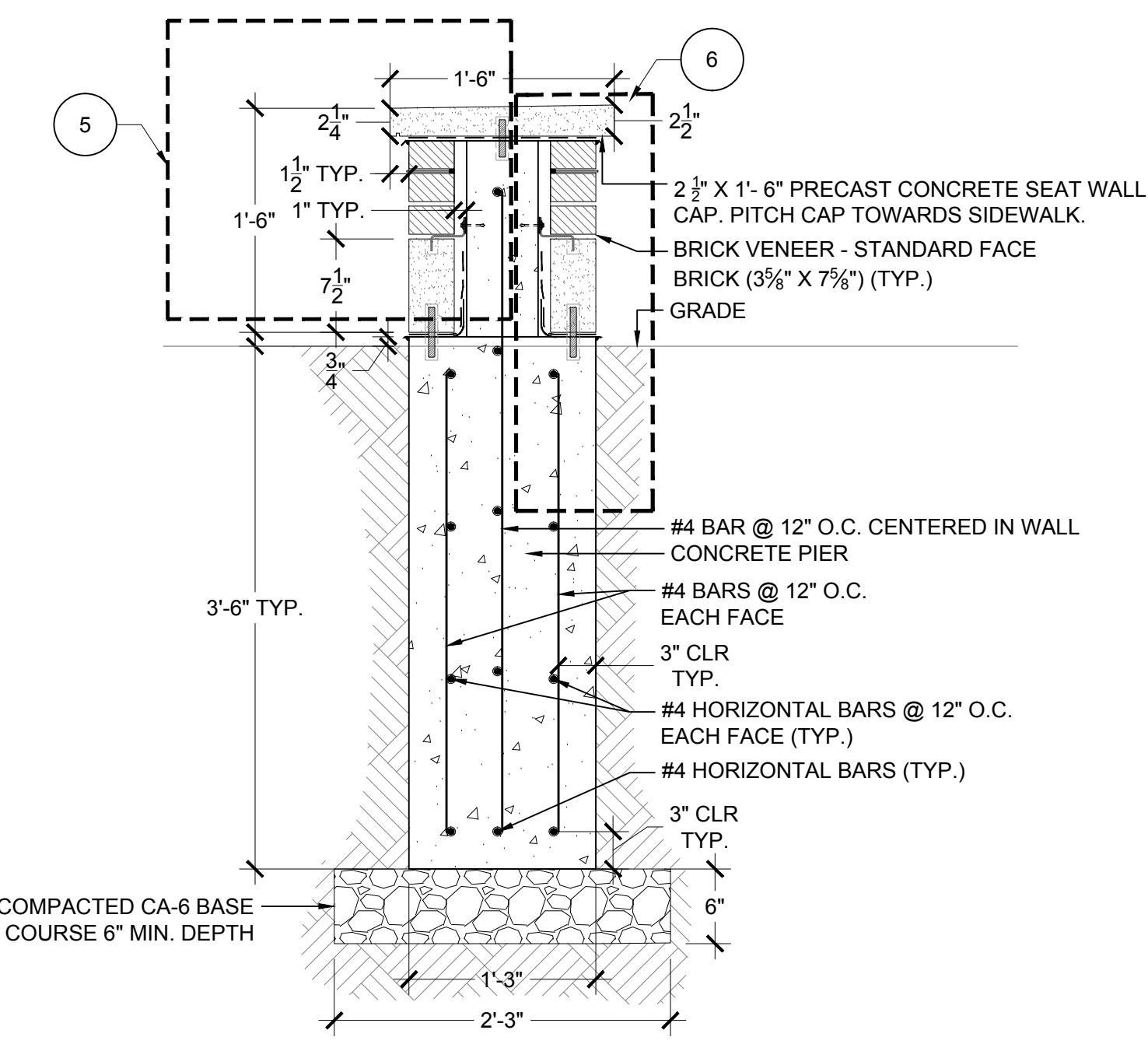
2 COLUMN CAP DETAIL
SCALE: 2" = 1'-0"



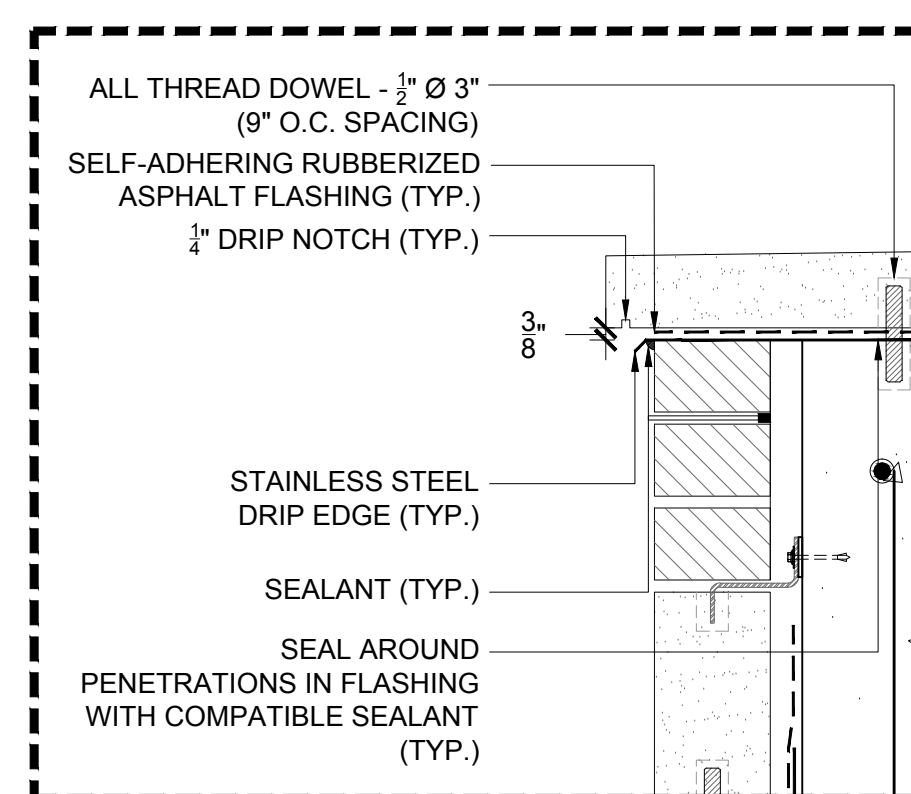
3 COLUMN BASE DETAIL
SCALE: 2" = 1'-0"



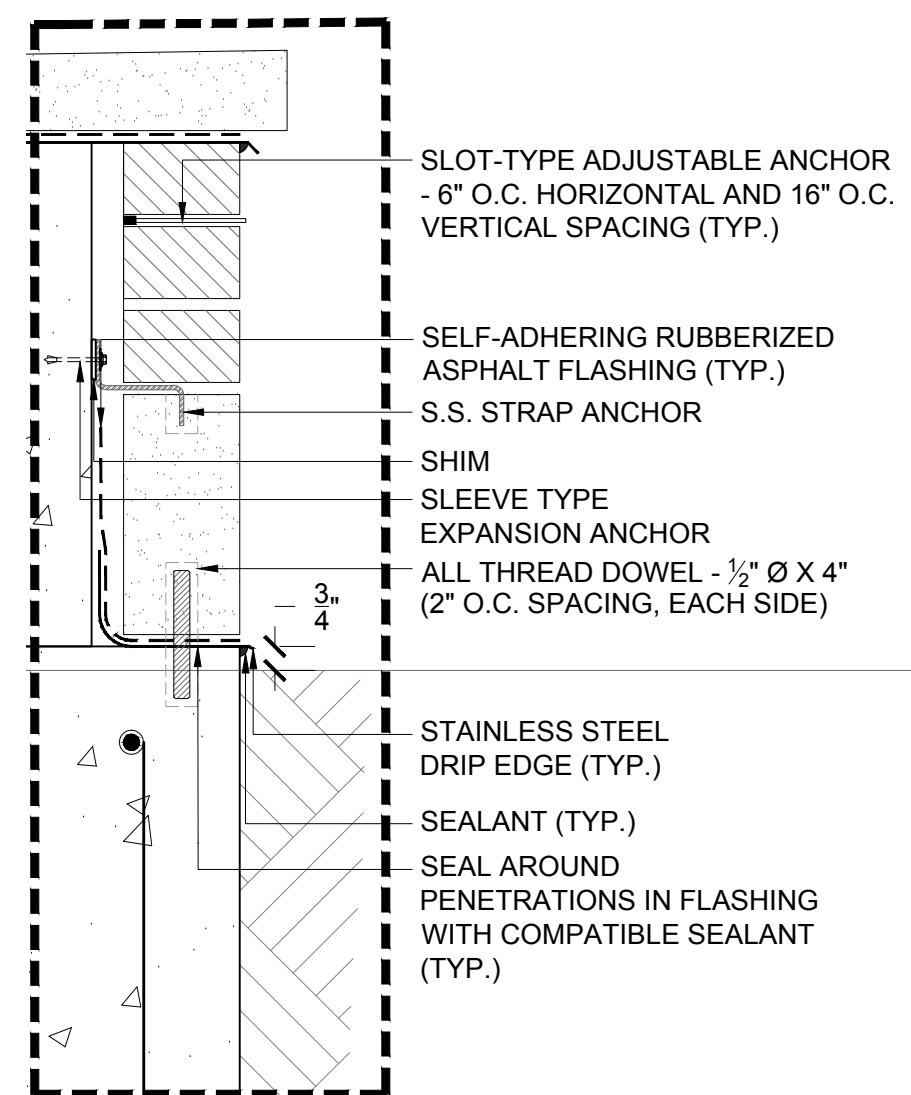
7 COLUMN AND SEATWALL ELEVATION
SCALE: 1" = 1'-0"



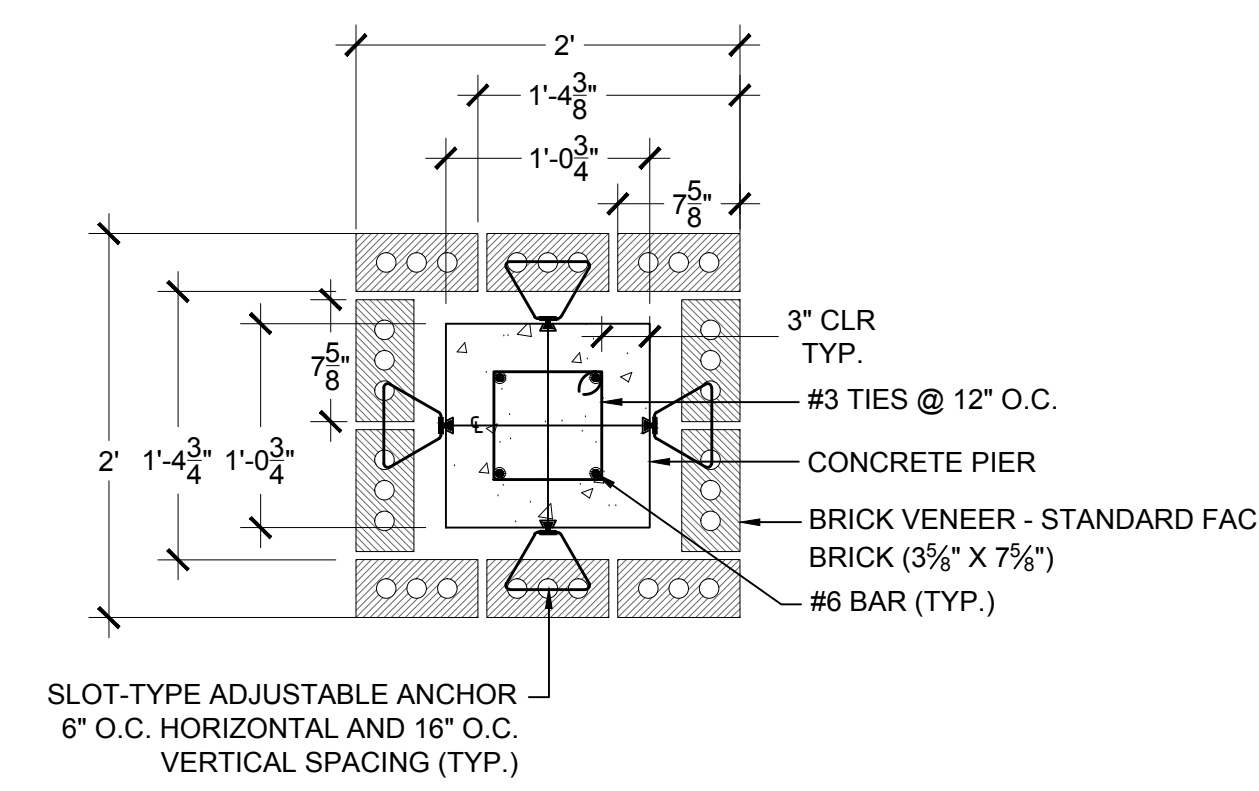
4 SEATWALL SECTION
SCALE: 1" = 1'-0"



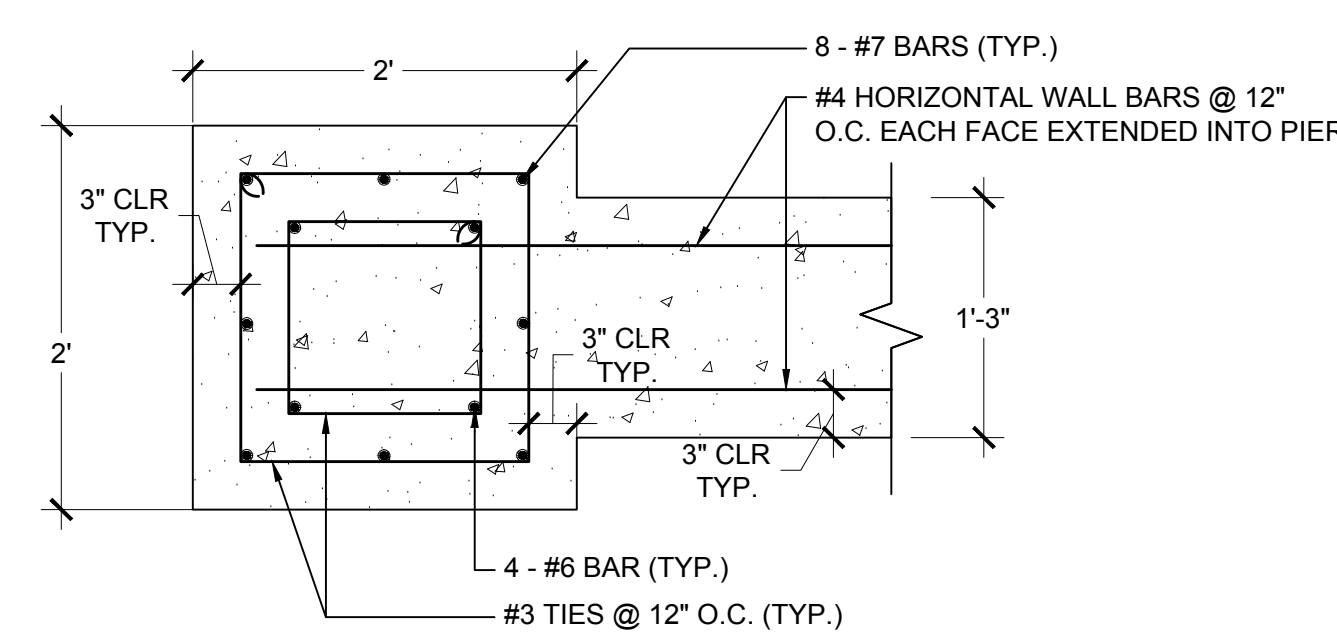
5 SEATWALL CAP DETAIL
SCALE: 2" = 1'-0"



6 SEATWALL BASE DETAIL
SCALE: 2" = 1'-0"



8 CONCRETE PIER DETAIL
SCALE: 1" = 1'-0"



9 CONCRETE BASE DETAIL
SCALE: 1" = 1'-0"

Stamp

BOARD APPROVED

Case No: 2014-0724

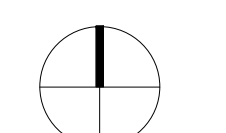
Date: 3/21/16

W/Conditions: _____

W/Out Conditions: _____

VILLAGE OF ORLAND PARK

Revisions	No.	Description	Date
	1	CCA#3	11/20/15



Drawing Title
SEATWALL DETAILS

Job Number	34013-00	Drawing No.	
Drawn by	TEL	Checked	WGS
Date	11/20/2015		

11.20.2015
TEL

L2.01