

PROJECT NUMBER  
FILE NUMBER  
**9-14-07**  
DATE  
**SF**  
DRAWN BY

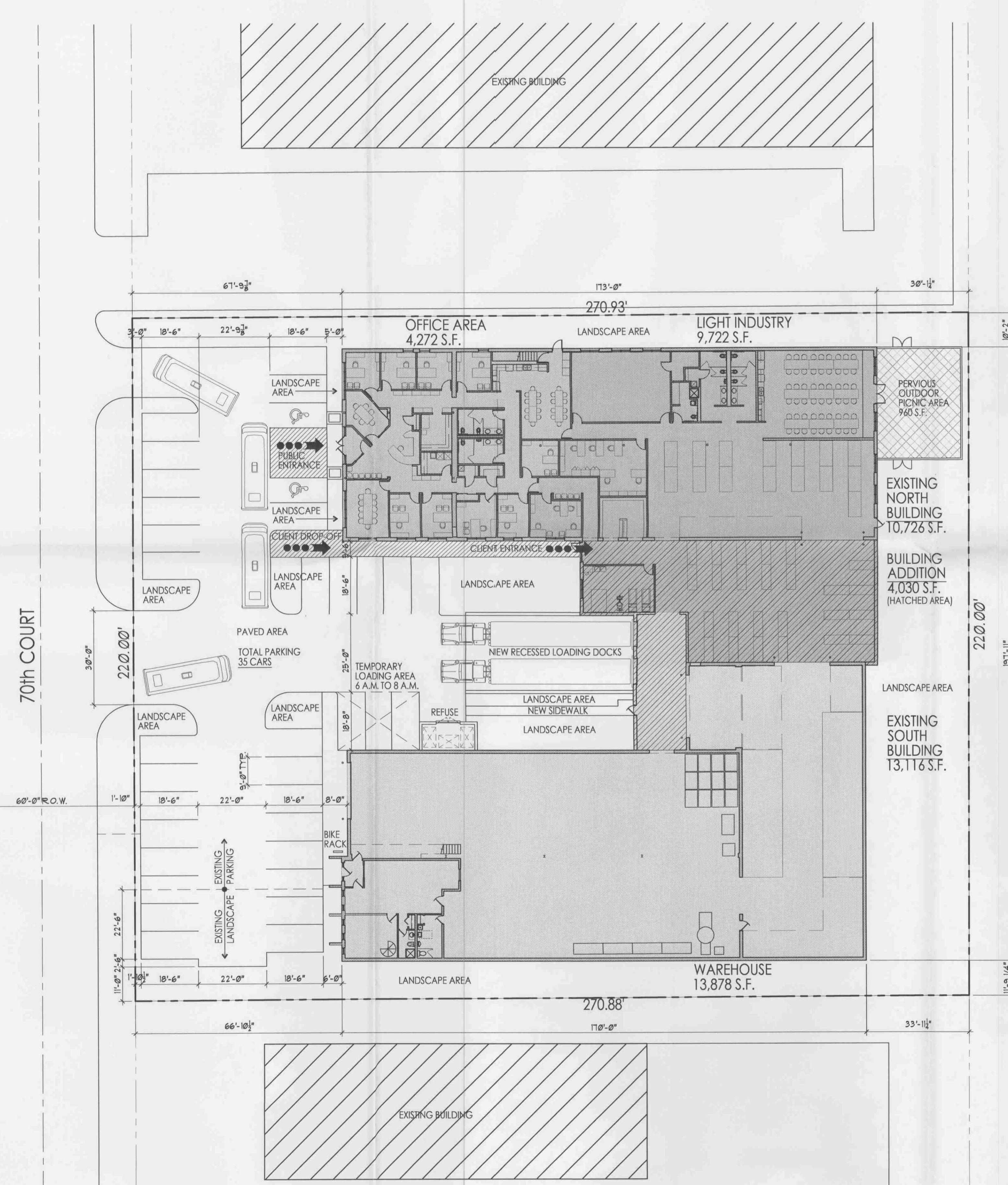
FINAL REVIEW  
COPYRIGHT - LINDEN GROUP INC.  
ALL RIGHTS RESERVED.  
ALL DRAWINGS, SPECIFICATIONS, PLANS, CONCEPTS, APPROVALS  
AND NOTES REPRESENTED OR REFERRED TO IN THESE DOCUMENTS  
ARE THE PROPERTY OF LINDEN GROUP INC. AND SHALL NOT BE REPRODUCED OR  
TRANSMITTED IN ANY FORM OR BY ANY MEANS WITHOUT THE EXPRESS WRITTEN  
AUTHORIZATION OF LINDEN GROUP INC.

EXISTING CONDITIONS

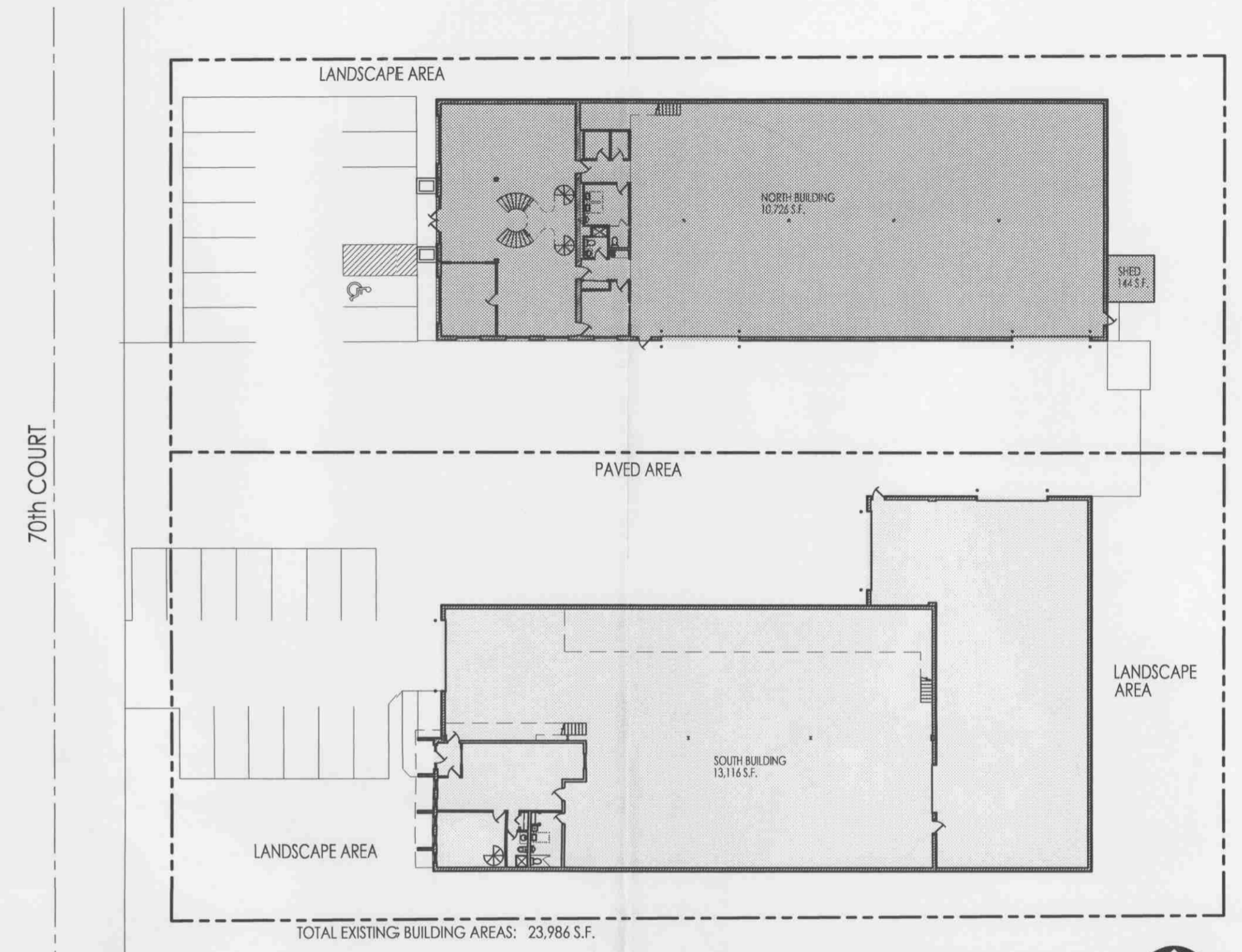
PROPOSED ADDITION

OASIS ENTERPRISES  
SHEET NAME

**A-1**  
SHEET OF

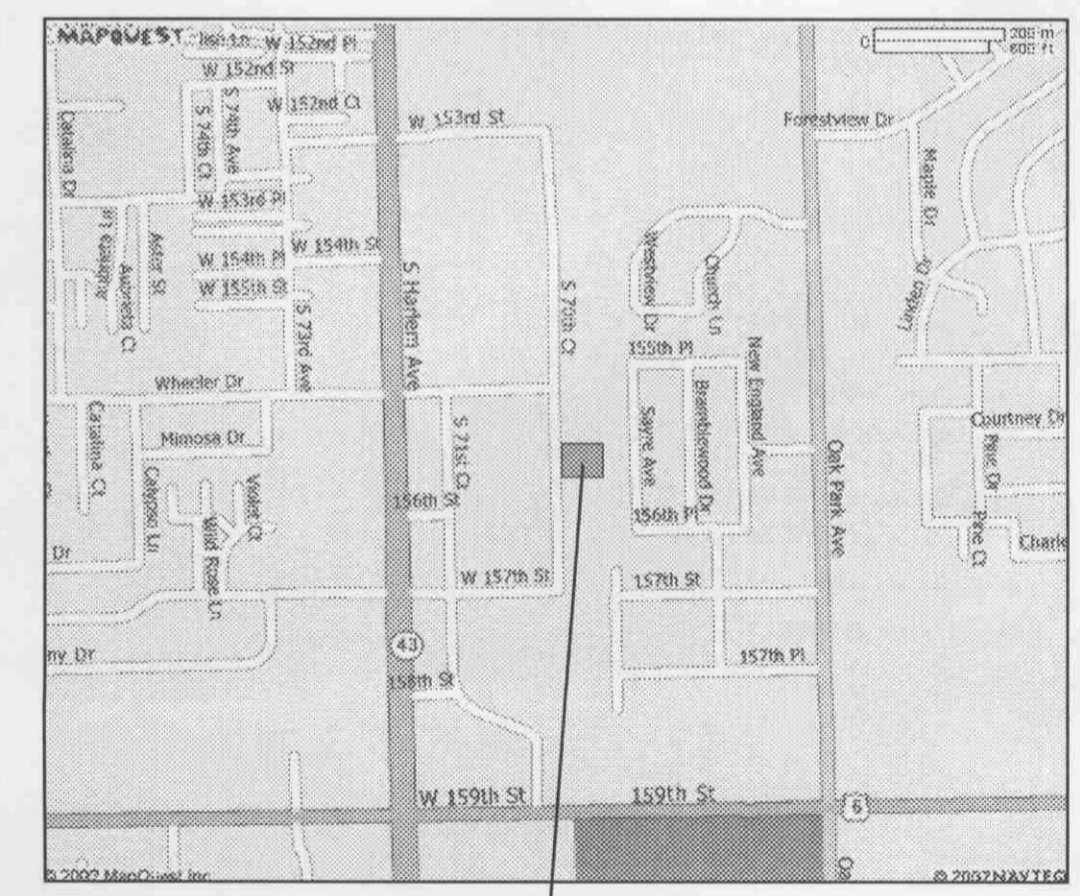


**PROPOSED SITE PLAN**  
1"=20'-0"



**EXISTING SITE PLAN**  
1"=30'-0"

SITE DATA:		
	EXISTING	PROPOSED
ZONING DISTRICT:	MFG	MFG
LOT AREA:	59,599 S.F.	59,599 S.F.
BUILDING AREA:	23,986 S.F.	27,872 S.F.
F.A.R. (MAX. 1.5):	0.40	0.47
PAVEMENT AREA:	21,614 S.F.	16,196 S.F.
PERCENTAGE OF LOT COVERAGE:	36.3%	27.2%
LANDSCAPE AREA:	13,999 S.F.	15,531 S.F.
PERCENTAGE OF LOT COVERAGE:	23.5%	26.0%
SETBACKS:		
FRONT YARD (MIN. 50):	66'-10"	66'-10"
SIDE YARD (MIN. 20):	10'	10'
REAR YARD (MIN. 20):	30'	30'
HEIGHT (MAX. 3 STORIES / 40):	1 STORY / 22'	1 STORY / 22'
PARKING (EXISTING):		
OFFICE - 4,295 S.F. / 300 =	14	
MANUFACTURING - 19,691 S.F. / 1000 =	20	
TOTAL REQUIRED PARKING =	34	24 (70.6% OF REQUIRED)
PARKING (PROPOSED):		
OFFICE - 4,272 S.F. / 300 =	14	
LIGHT INDUSTRY - 9,722 S.F. / 1000 X 2 =	19	
WAREHOUSE - 13,878 S.F. / 1000 =	14	
TOTAL REQUIRED PARKING =	47	35 (75% OF REQUIRED)
LOADING SPACES (EXISTING):		
(10,001 - 25,000 S.F.) - 2 REQUIRED	2	
LOADING SPACES (PROPOSED):		
(25,001 - 40,000 S.F.) - 3 REQUIRED		3
BICYCLE PARKING - 4 SPACES REQUIRED	0	4



**LOCATION MAP**

BOARD APPROVED  
CASE NO. 2007-0492.2  
DATE 10-1-07  
W/CONDITIONS   
W/O CONDITIONS

**SITE ADDRESS:**  
OASIS ENTERPRISES  
15665 SOUTH 70th COURT  
ORLAND PARK, IL 60462  
(ORLAND TOWNSHIP)