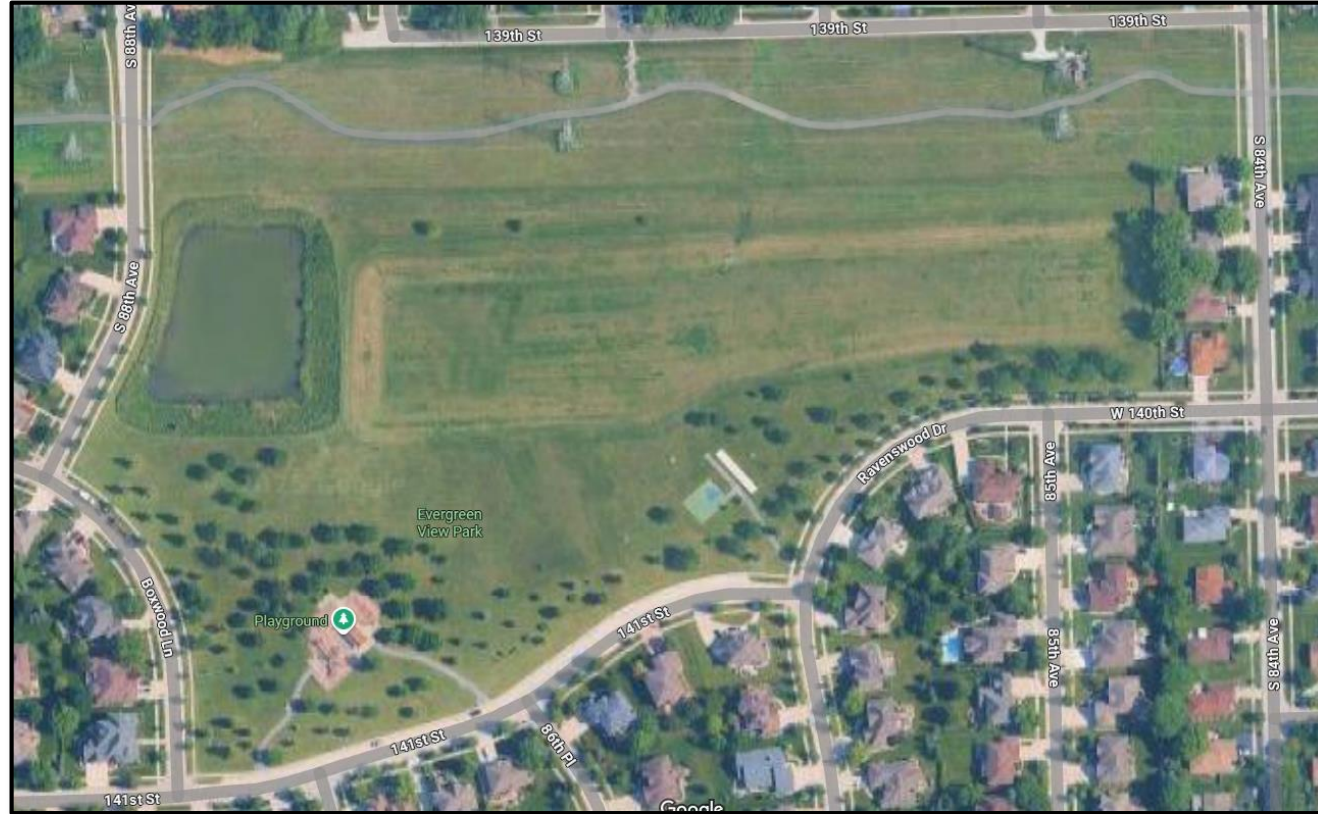


Evergreen View Park Conceptual Plan Survey Results



EVERGREEN VIEW PARK

CURRENT PARK AMENITIES



PLAYGROUND AND PAVILION REPLACEMENT SCHEDULED FOR 2026

EVERGREEN VIEW PARK

OPEN SPACE LAND ACQUISITION AND DEVELOPMENT (OSLAD) GRANT

- RELEASED ON JULY 15, 2025
- \$600,000 REIMBURSABLE, MATCHING GRANT
- APPLICATIONS DUE SEPTEMBER 30, 2025
- GRANT RESOLUTION OF AUTHORIZATION
- ACKNOWLEDGES THE VILLAGES HAS SUFFICIENT FUNDS TO COMPLETE THE PENDING OSLAD PROJECT WITHIN THE SPECIFIED GRANT TIMEFRAME COMPLYING WITH ALL TERMS, CONDITIONS AND REGULATIONS AS SPECIFIED IN THE RESOLUTION OF AUTHORIZATION.

EVERGREEN VIEW PARK

CONCEPTUAL PLAN 1 – WITH A SPLASH PAD



LEGEND

- A. PLAY AREA - AGE 5-12
- B. PLAY AREA - AGE 2-5
- C. PLAY AREA - SWINGS
- D. EXISTING RETAINING SEAT WALL
- E. EXISTING PAVILION
- F. MEMORIAL BENCH
- G. POLLINATOR GARDEN
- H. PLAZA WITH TRELLIS
- I. SPRAY AREA
- J. 3-HOLE FRISBEE GOLF
- K. DRINKING FOUNTAIN
 - DOG BOWL
 - WATER BOTTLE FILLER

EVERGREEN VIEW PARK

CONCEPTUAL PLAN 1 – WITH A SPLASH PAD



LEGEND

- L. SHADE STRUCTURE
- M. ACCESSIBLE GAGA PIT
- N. SYNTHETIC TURF BOCCE BALL
- O. BAG TOSS
- P. RESURFACED MULTI-SPORT COURT
 - CHALK ART FRAME
 - FOUR SQUARE
 - HALF COURT SHOOT AROUND
- Q. PICKLEBALL COURTS
- R. PUTTING GREEN
- S. EXISTING DRINKING FOUNTAIN

EVERGREEN VIEW PARK

CONCEPTUAL PLAN 1 – WITHOUT A SPLASH PAD



LEGEND

- A. PLAY AREA - AGE 5-12
- B. PLAY AREA - AGE 2-5
- C. PLAY AREA - SWINGS
- D. EXISTING RETAINING SEAT WALL
- E. EXISTING PAVILION
- F. MEMORIAL BENCH
- G. POLLINATOR GARDEN
- H. PLAZA WITH TRELLIS
- I. BUTTERFLY GARDEN
- J. STONE STEPPERS
 - SCULPTURE / LOCAL ART
- K. BENCH SEATING
- L. SHADE STRUCTURE

EVERGREEN VIEW PARK

CONCEPTUAL PLAN 1 – WITHOUT A SPLASH PAD CONT.



LEGEND

- M. ACCESSIBLE GAGA PIT
- N. SYNTHETIC TURF BOCCE BALL
- O. BAG TOSS
- P. RESURFACED MULTI-SPORT COURT
 - CHALK ART FRAME
 - FOUR SQUARE
 - HALF COURT SHOOT AROUND
- Q. PICKLEBALL COURTS
- R. PUTTING GREEN
- S. DRINKING FOUNTAIN
 - DOG BOWL
 - WATER BOTTLE FILLER
- T. EXISTING DRINKING FOUNTAIN
- U. 3-HOLE FRISBEE GOLF

EVERGREEN VIEW PARK

CONCEPTUAL PLAN INPUT PROCESS

NEIGHBORHOOD INPUT SURVEY

- 908 POSTCARDS WITH THE SURVEY QR CODE MAILED TO RESIDENTS WITHIN 1,500-FOOT RADIUS OF THE PARK
- SAME DATABASE AS THE FIRST ROUND OF PUBLIC INPUT
- FOUR DOUBLE SIDED SIGNS PLACED AT THE PARK FEATURING THE QR CODE



EVERGREEN VIEW PARK

SURVEY RESULTS

EVERGREEN VIEW PARK SURVEY – RESPONSE OVERVIEW

- HOUSEHOLDS CONTACTED: 908 (WITHIN 1,500 FT. OF PARK)
- RESPONSES RECEIVED: 366
- RESPONSE RATE: 40.3%
- A 40% RESPONSE RATE IS A VERY STRONG LEVEL OF PARTICIPATION, WELL ABOVE TYPICAL RANGE OF 10–25% FOR MAILED/ONLINE MUNICIPAL SURVEYS.
- WITH 366 RESPONSES, THE MARGIN OF ERROR IS ABOUT $\pm 4.5\%$ AT A 95% CONFIDENCE LEVEL.
- RESULTS CAN BE CONSIDERED STATISTICALLY VALID AND REPRESENTATIVE OF THE HOUSEHOLDS WITHIN 1,500 FEET OF THE PARK.

EVERGREEN VIEW PARK

RESPONDENT SELF-REPORTED PROXIMITY TO THE PARK

WHICH CONCEPTUAL PLAN DO YOU PREFER?	PLAN A (WITH SPLASH PAD): 130 (36.01%)	PLAN B (W/O SPLASH PAD): 231 (63.99%)	
ARE YOU IN FAVOR OF A SPLASH PAD?	YES: 133 (36.74%)	NO 229: (63.26%)	
ARE YOU IN FAVOR OF PICKLEBALL COURT(S)?	YES, 1 COURT: 73 (20.11%)	YES, 2 COURTS: 219 (60.33%)	NO: 71 (19.56%)
ARE YOU IN FAVOR OF A NATURAL GRASS SOCCER FIELD?	YES: 145 (39.84%)	NO: 219 (60.16%)	
ARE YOU IN FAVOR OF A PUTTING GREEN?	YES: 232 (64.09%)	NO: 130 (35.91%)	
ARE YOU IN FAVOR OF 3-4 FRISBEE GOLF BASKETS?	YES: 239 (66.57%)	NO: 120 (33.43%)	
ARE YOU IN FAVOR OF A BAG TOSS GAME?	YES, 1 COURT: 133 (37.05%)	YES, 2 COURTS: 85 (23.68%)	NO: 141 (39.28%)
WHICH DO YOU PREFER?	POLLINATOR GARDEN: 132 (38.15%)	BUTTERFLY GARDEN: 214 (61.85%)	

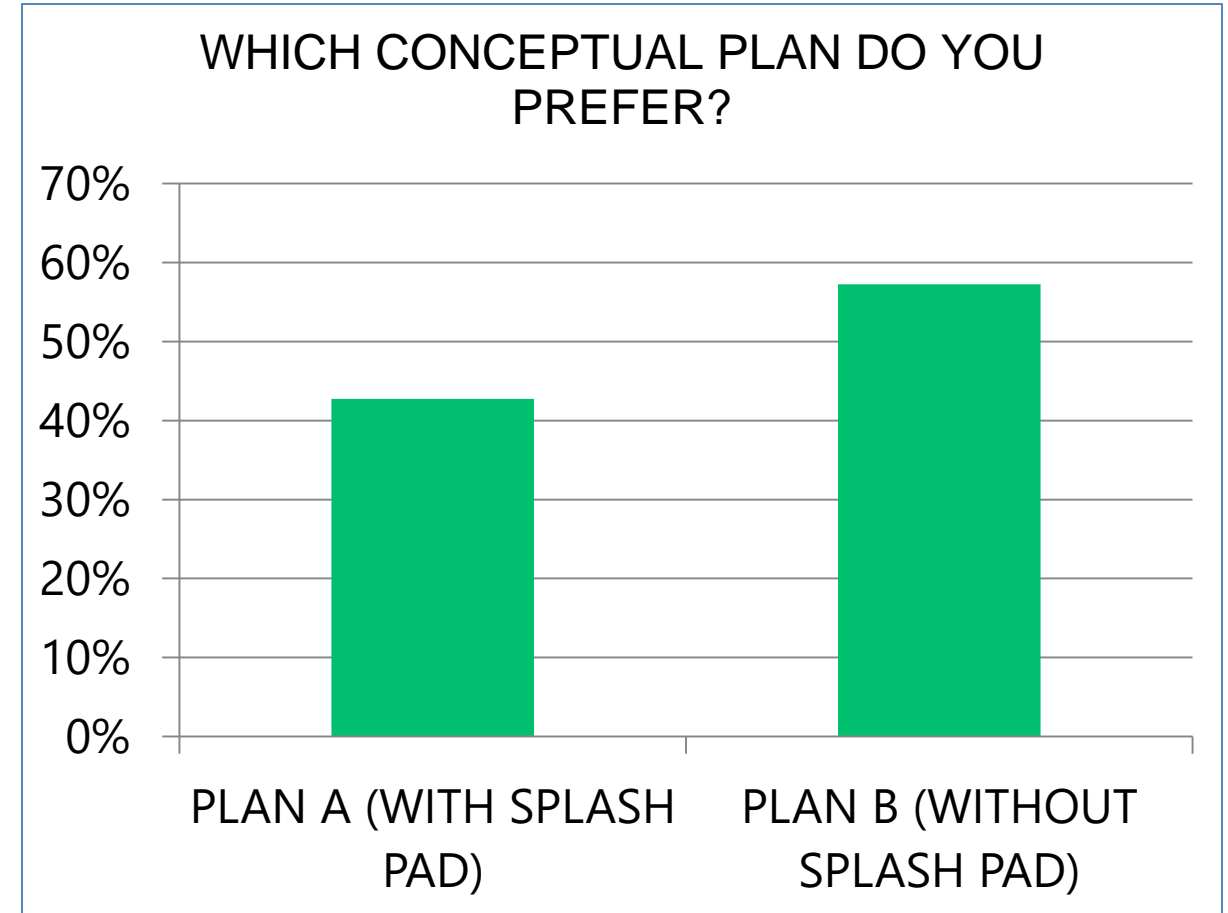
EVERGREEN VIEW PARK

SURVEY RESULTS: WHICH CONCEPTUAL PLAN DO YOU PREFER?

1. WHICH CONCEPTUAL PLAN DO YOU PREFER?

PLAN A (WITH SPLASH PAD): 130 (36.01%)

**PLAN B (WITHOUT SPLASH PAD): 231
(63.99%)**



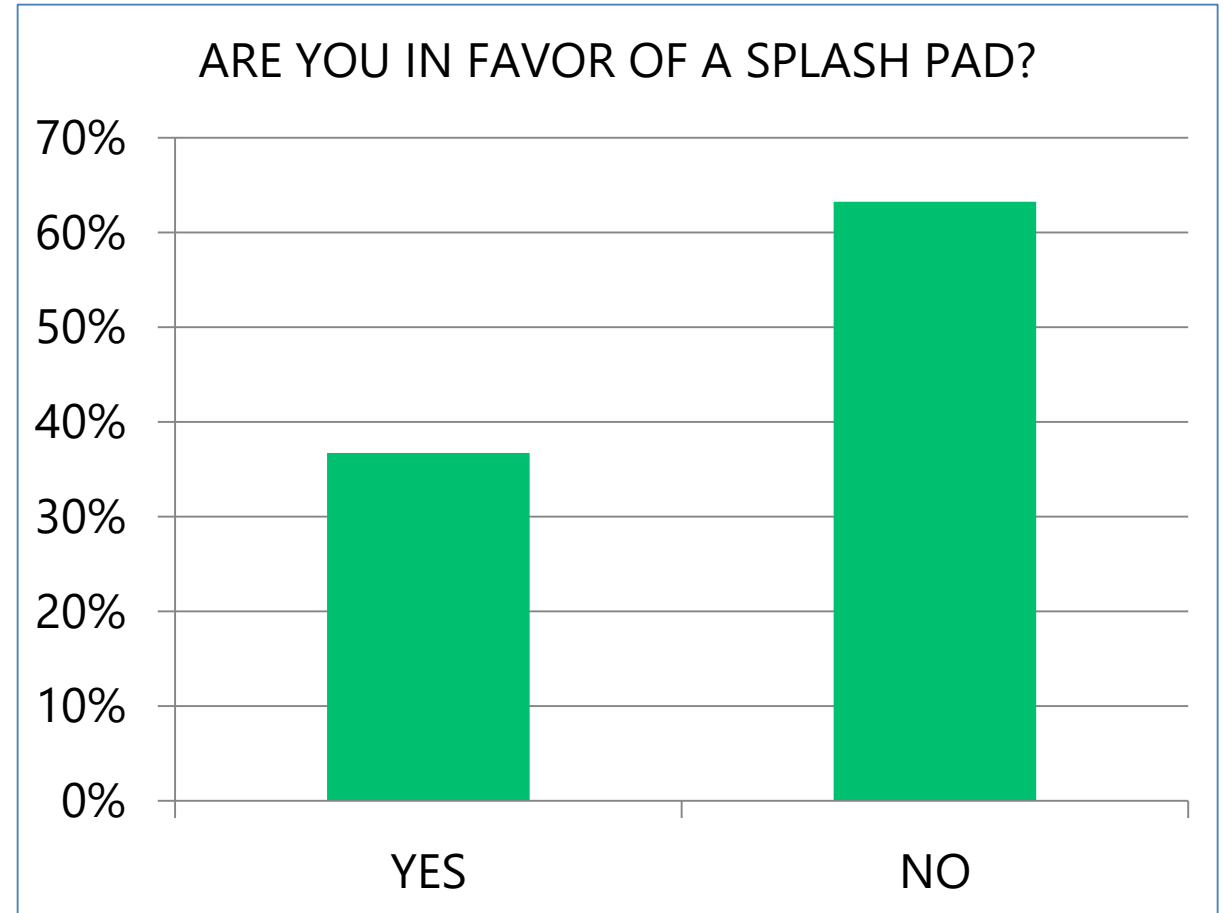
EVERGREEN VIEW PARK

SURVEY RESULTS: ARE YOU IN FAVOR OF A SPLASH PAD?

2. ARE YOU IN FAVOR OF A SPLASH PAD?

YES: 133 (36.74%)

NO: 229 (63.26%)



EVERGREEN VIEW PARK

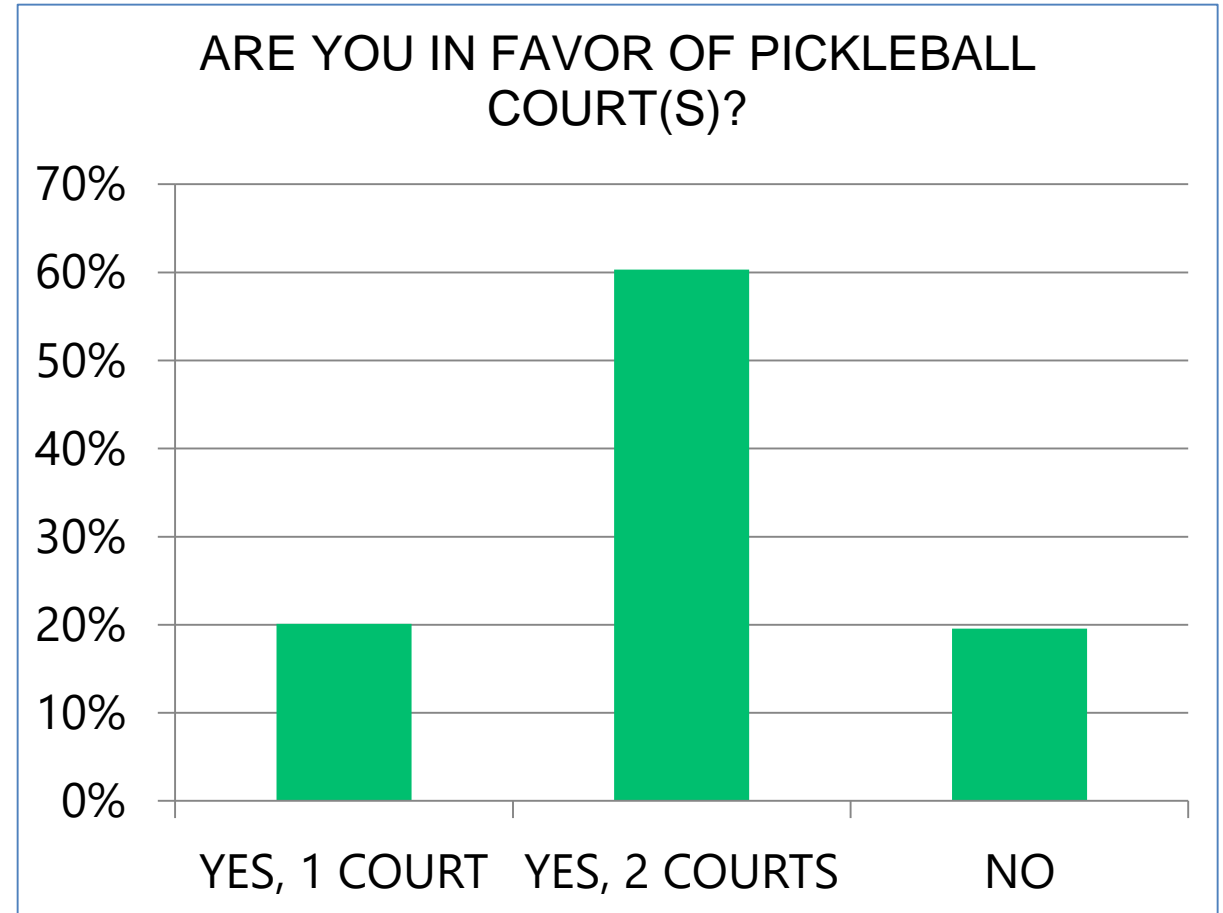
SURVEY RESULTS: ARE YOU IN FAVOR OF PICKLEBALL COURT(S)?

3. ARE YOU IN FAVOR OF PICKLEBALL COURT(S)?

YES, 1 COURT: 73 (20.11%)

YES, 2 COURTS: 219 (60.33%)

NO: 71 (19.56%)



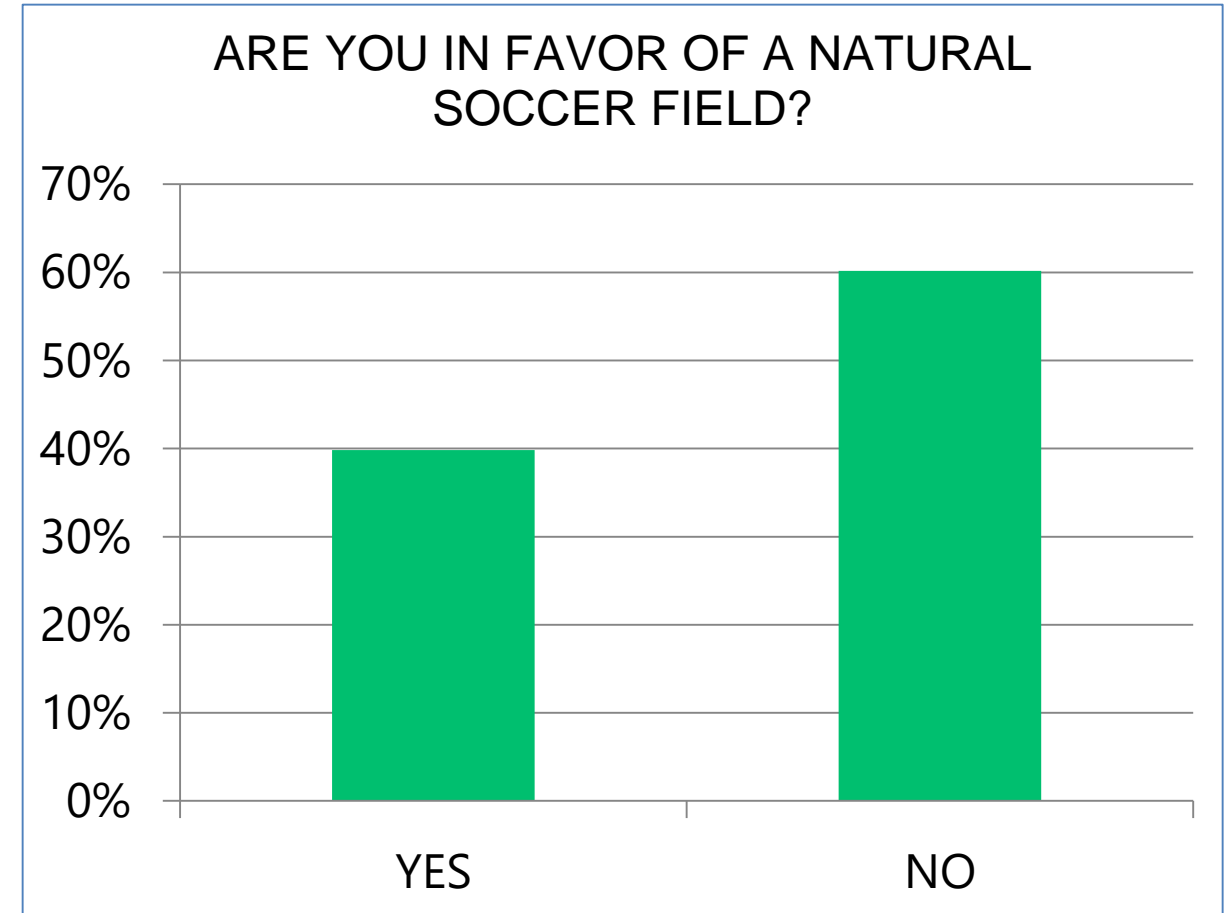
EVERGREEN VIEW PARK

SURVEY RESULTS: ARE YOU IN FAVOR OF A NATURAL GRASS SOCCER FIELD?

4. ARE YOU IN FAVOR OF A NATURAL GRASS SOCCER FIELD?

YES: 145 (39.84%)

NO: 219 (60.16%)



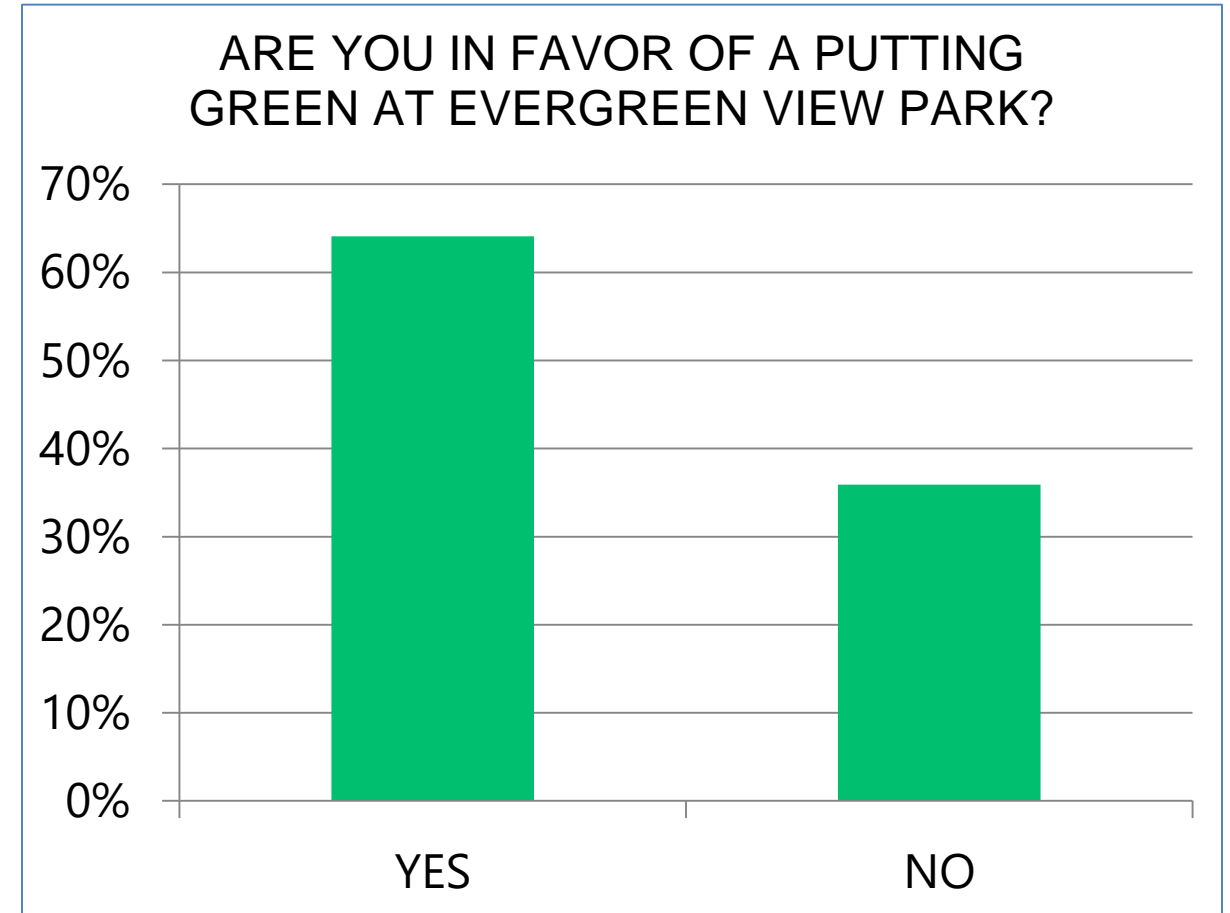
EVERGREEN VIEW PARK

SURVEY RESULTS: ARE YOU IN FAVOR OF A PUTTING GREEN?

5. ARE YOU IN FAVOR OF A PUTTING GREEN?

YES: 232 (64.09%)

NO: 130 (35.91%)



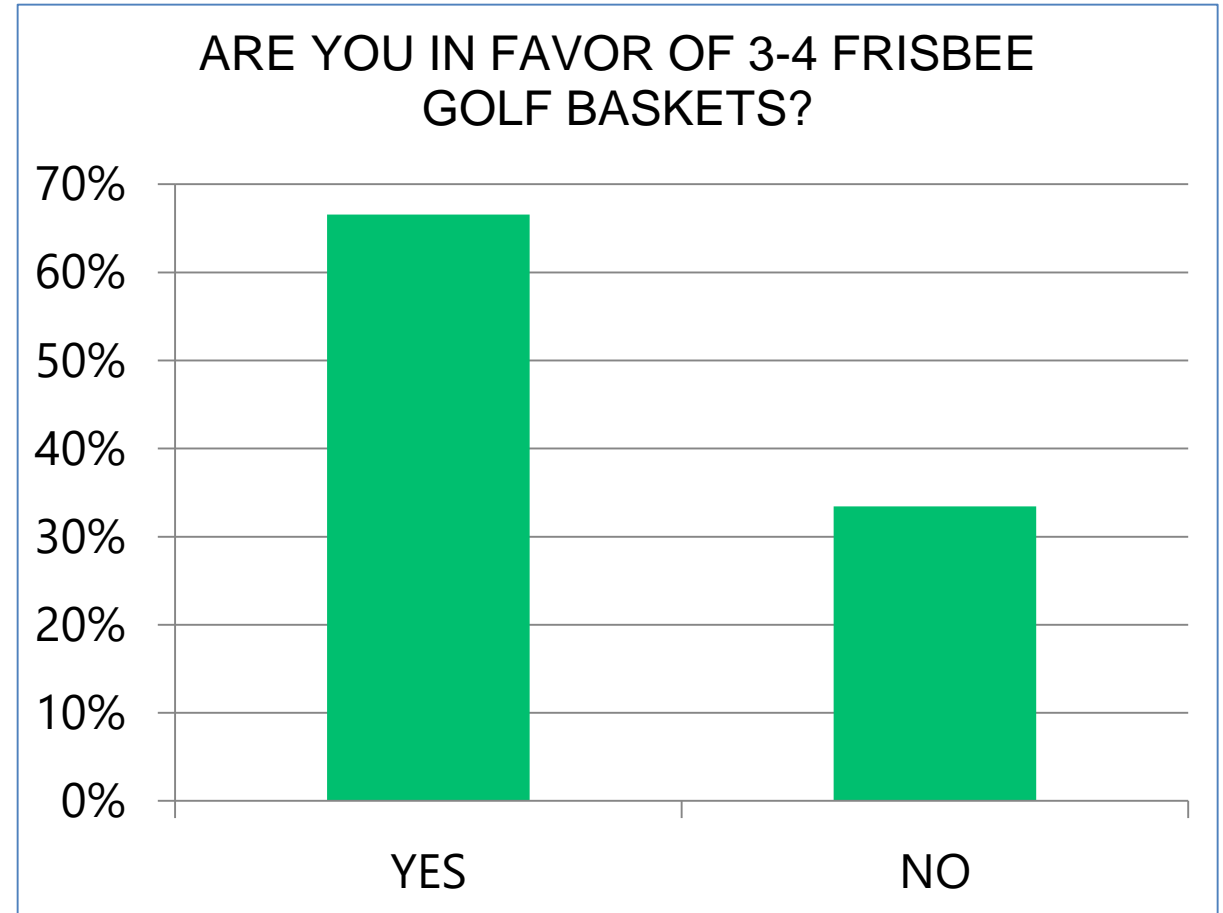
EVERGREEN VIEW PARK

SURVEY RESULTS: ARE YOU IN FAVOR OF 3-4 FRISBEE GOLF BASKETS?

6. ARE YOU IN FAVOR OF 3-4 FRISBEE GOLF BASKETS?

YES: 239 (66.57%)

NO: 120 (33.43%)



EVERGREEN VIEW PARK

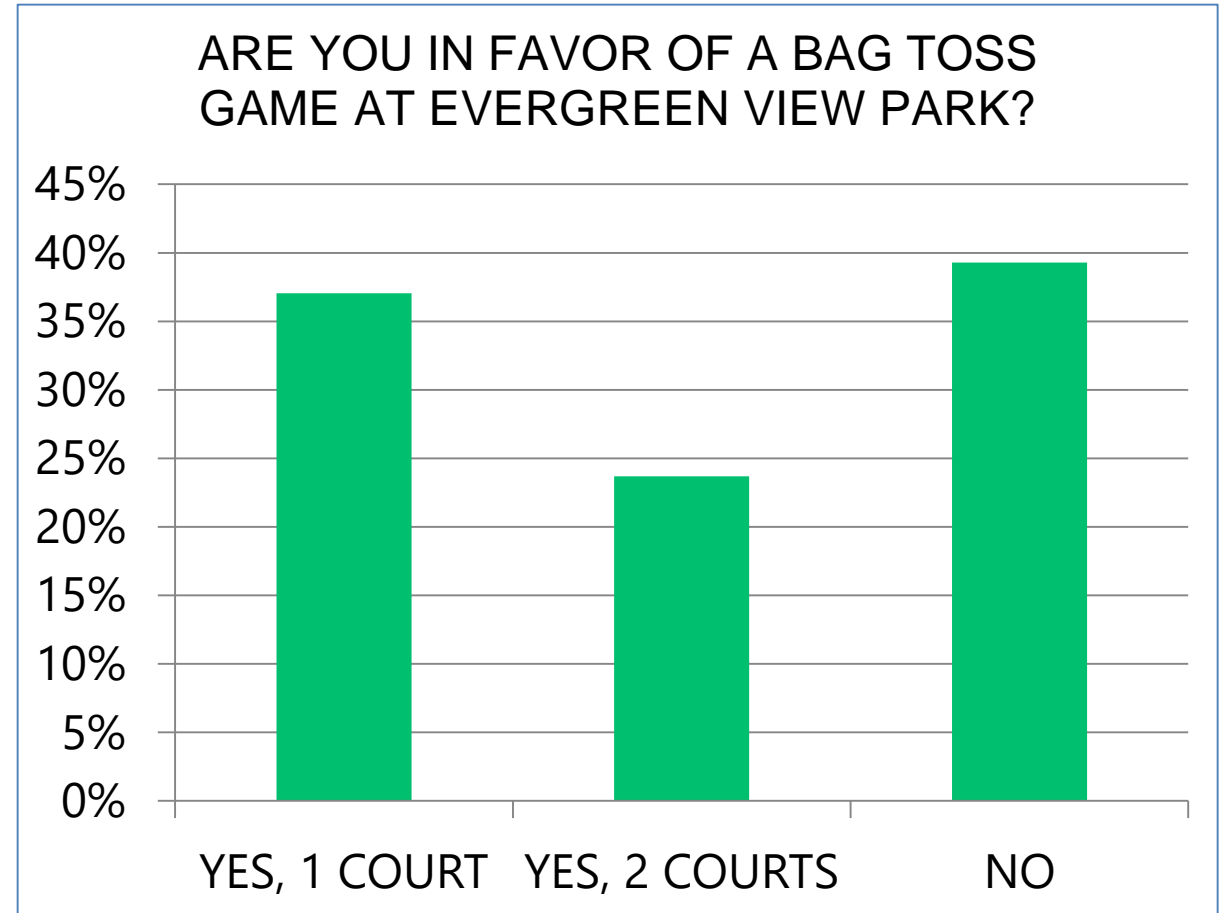
SURVEY RESULTS: ARE YOU IN FAVOR OF A BAG TOSS GAME?

7. ARE YOU IN FAVOR OF A BAG TOSS GAME?

YES, 1 COURT: 133 (37.05%)

YES, 2 COURTS: 85 (23.68%)

NO: 141 (39.28%)



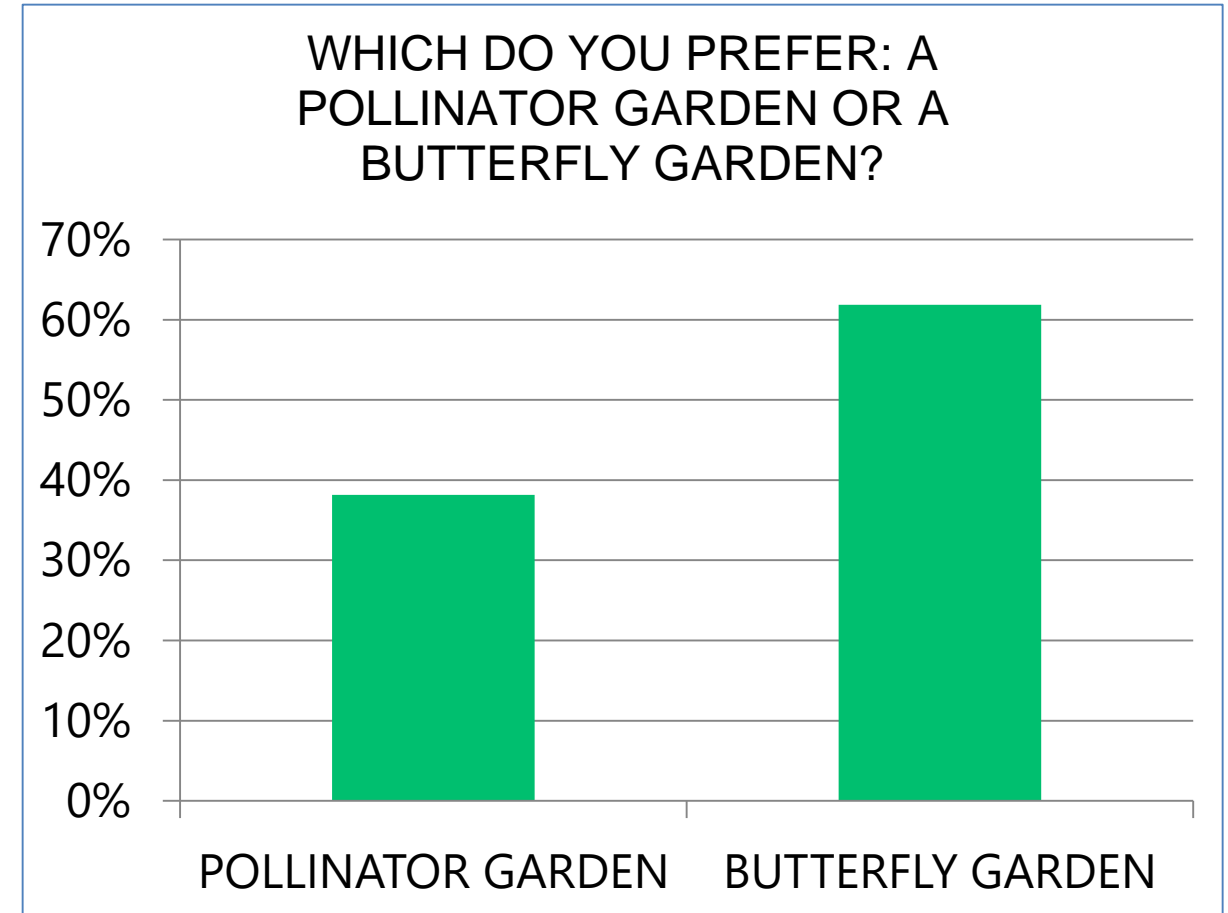
EVERGREEN VIEW PARK

SURVEY RESULTS: WHICH DO YOU PREFER: POLLINATOR GARDEN OR BUTTERFLY GARDEN?

8. WHICH DO YOU PREFER?

POLLINATOR GARDEN: 132 (38.15%)

BUTTERFLY GARDEN: 214 (61.85%)

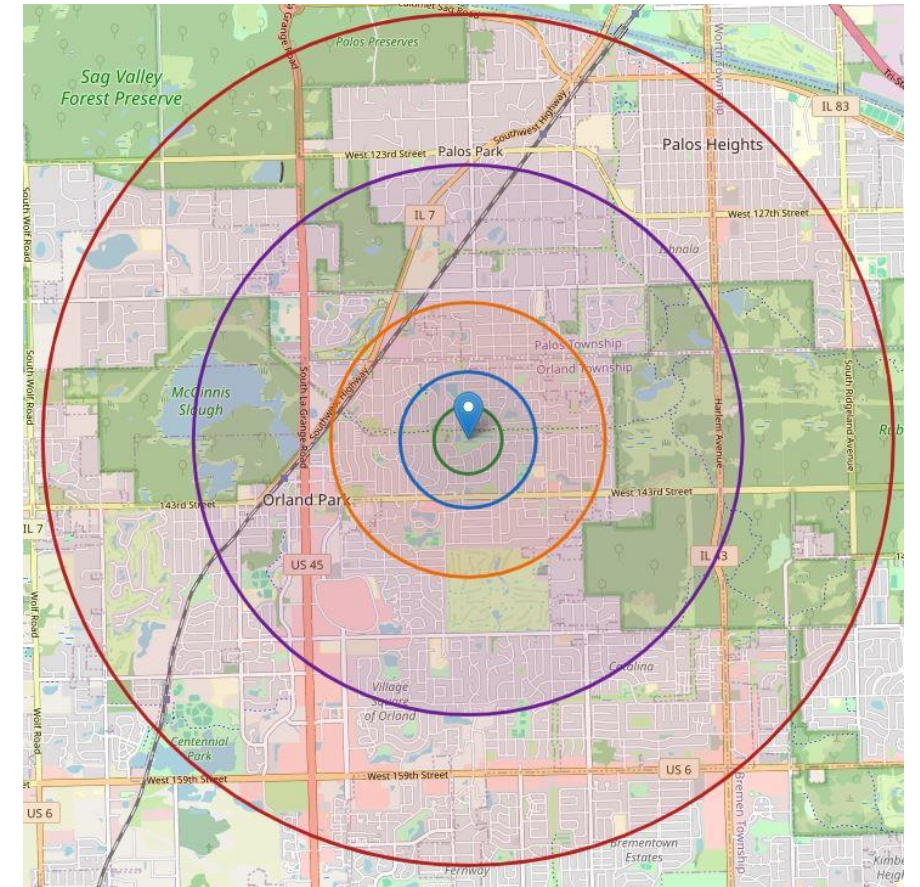


EVERGREEN VIEW PARK

RESPONDENT SELF-REPORTED PROXIMITY TO THE PARK

RESPONDENT PROXIMITY TO EVERGREEN VIEW PARK

Distance	Count	Percent
Less than ¼ mile	271	(74.45%)
¼ – ½ mile	67	(18.41%)
½ – 1 mile	17	(4.67%)
1 – 2 miles	5	(1.37%)
More than 2 miles	4	(1.10%)



EVERGREEN VIEW PARK

OPEN-ENDED RESPONSES

KEY TAKEAWAYS

- KEEP THE PARK "QUIET," NATURAL, AND NEIGHBORHOOD-SCALED
- STRONG OPPOSITION TO A SPLASH PAD AND SOCCER FIELD WITH TRAFFIC, PARKING AND NEIGHBORHOOD SAFETY NOTED AS THE STRONGEST OPPOSITION TO BOTH
- SPLASH PAD WELCOMED IN ORLAND PARK AND ENCOURAGED AT CENTENNIAL PARK AQUATIC CENTER
- PREFERENCE FOR NEIGHBORHOOD-SCALE UPDATES: PLAYGROUND, SHADE, TREES, PICKLEBALL, PUTTING GREEN
- SUPPORT FOR POLLINATOR/BUTTERFLY GARDENS IF MAINTAINED PROPERLY
- NEED FOR AN UPDATED PLAYGROUND AS NOTED IN PREVIOUS COMMUNITY INPUT MEETINGS
- NEWLY SUGGESTED FRIBEE GOLF BASKETS WELCOMED

EVERGREEN VIEW PARK

SPLASH PAD SURVEY RESULTS AND NEXT STEPS

WHILE THERE WAS OVERWHELMING OPPOSITION TO THE SPLASH PAD AT EVERGREEN VIEW PARK, THERE IS POPULAR SUPPORT FOR A SPLASH PAD AT CENTENNIAL PARK AQUATIC CENTER AND OTHER PARKS THROUGHOUT ORLAND PARK.

NEXT STEPS

2026: A&E FOR A NEW SPLASH PAD AT CPAC,
REPLACING THE SAND VOLLEYBALL COURT
2027: BEGIN CONSTRUCTION ON A NEW SPLASH PAD



EVERGREEN VIEW PARK

Discussion

Staff seek input and direction on the conceptual plan to incorporate into the OSLAD grant application.