



5200 Buffington Rd.  
Atlanta Georgia,  
30349-2998

Revisions:  
Mark Date By  
△ \_\_\_\_\_  
Mark Date By  
△ \_\_\_\_\_  
Mark Date By  
△ \_\_\_\_\_

Seal

Seal

Seal

Seal

Seal

Seal

Seal

Seal

Seal

Seal

Seal

Seal

Seal

Seal

Seal

Seal

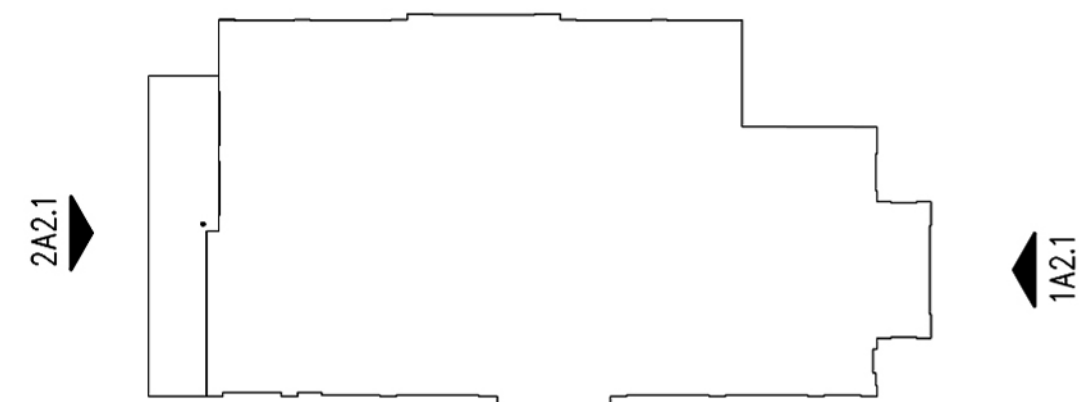
Seal

Seal

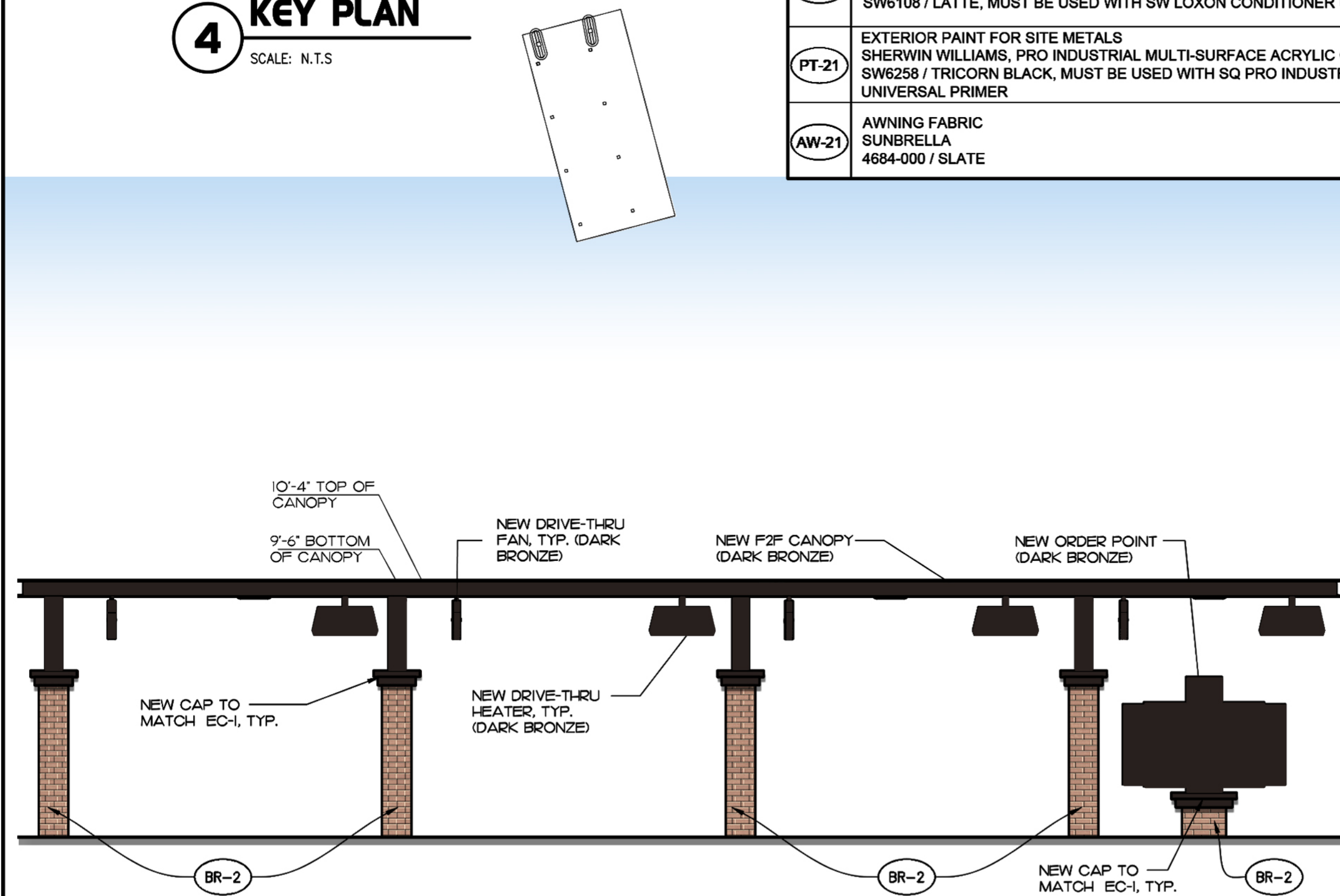
Seal

Seal

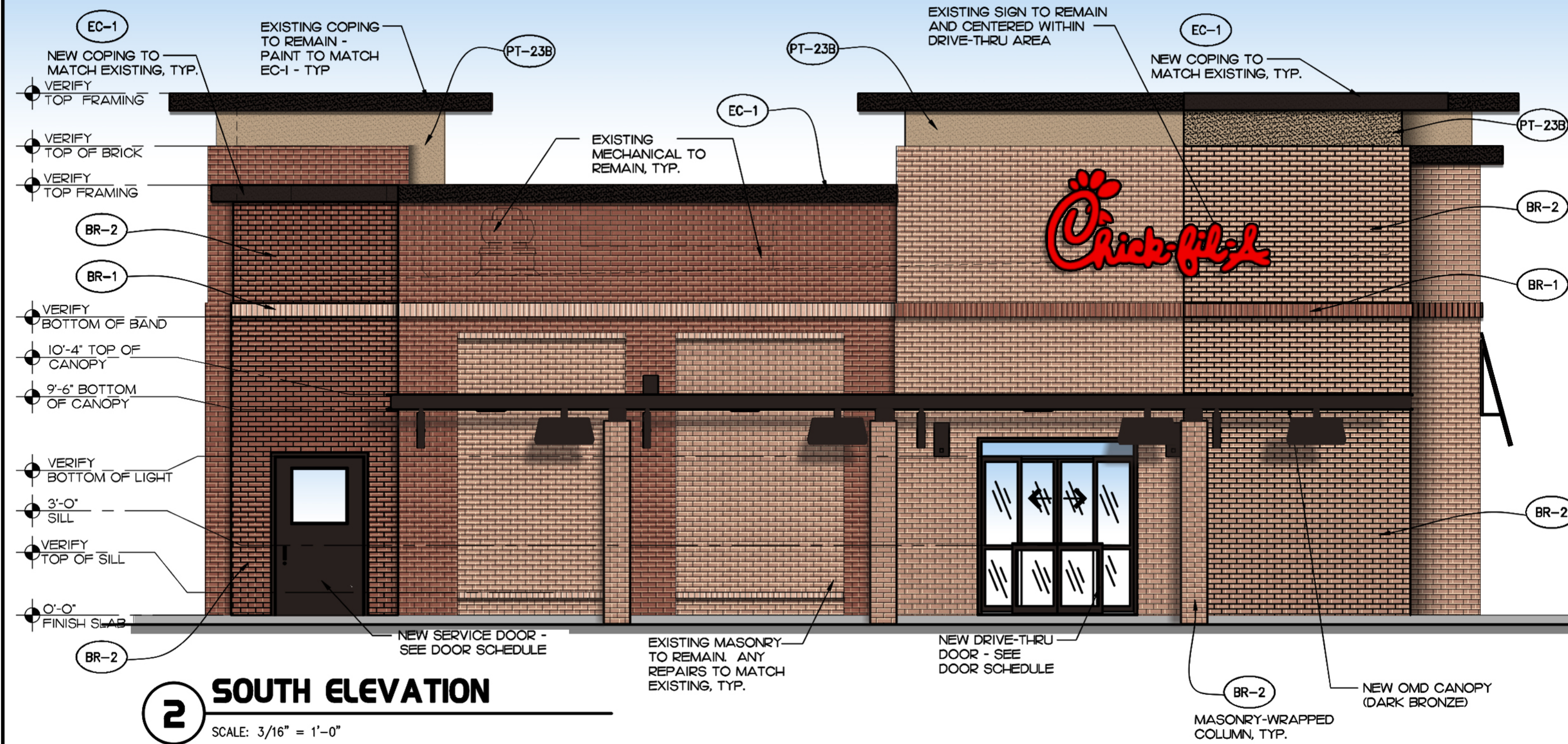
3 EXTERIOR FINISH SCHEDULE	
BR-1	BRICK #1 (MODULAR SIZE) MATCH EXISTING: RED VELOUR BY CUNNINGHAM BRICK MORTAR: MATCH EXISTING (BUFF) NOTE: GC TO PROVIDE A BOXED SET OF SAMPLES FOR COMPARISON/APPROVAL
BR-2	BRICK #1 (MODULAR SIZE) MATCH EXISTING: TAN BY CUNNINGHAM BRICK MORTAR: MATCH EXISTING (BUFF) NOTE: GC TO PROVIDE A BOXED SET OF SAMPLES FOR COMPARISON/APPROVAL
EC-1	PARAPET WALL COPING AS REQUIRED FOR NEW LOCATIONS DUROLAST/ EXCEPTIONAL METALS COLOR - BLACK (MATTE)
PT-23B	EXTERIOR PAINT FOR E.I.F.S. SHERWIN WILLIAMS, PRO INDUSTRIAL MULTI-SURFACE ACRYLIC COATING SW6108 / LATTE, MUST BE USED WITH SW LOXON CONDITIONER UNIVERSAL PRIMER
PT-21	EXTERIOR PAINT FOR SITE METALS SHERWIN WILLIAMS, PRO INDUSTRIAL MULTI-SURFACE ACRYLIC COATING SW6258 / TRICORN BLACK, MUST BE USED WITH SQ PRO INDUSTRIAL PRO-CRYL UNIVERSAL PRIMER
AW-21	AWNING FABRIC SUNBRELLA 4684-000 / SLATE



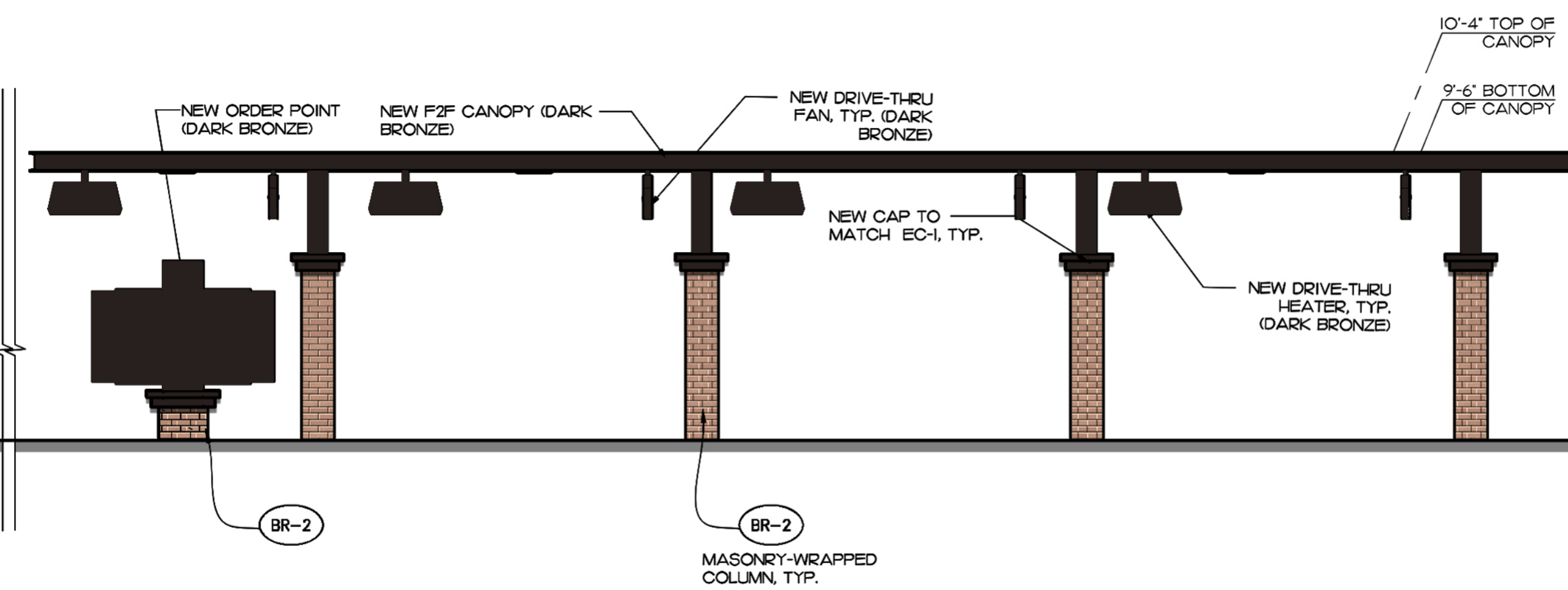
4 KEY PLAN  
SCALE: N.T.S.



1 NORTH ELEVATION  
SCALE: 3/16" = 1'-0"



2 SOUTH ELEVATION  
SCALE: 3/16" = 1'-0"



I HEREBY CERTIFY THAT THESE PLANS HAVE BEEN PREPARED UNDER MY OWN PERSONAL SUPERVISION AND TO THE BEST OF MY KNOWLEDGE THEY COMPLY WITH ALL LOCAL, STATE, FEDERAL AND ORDINANCES OF RELATED AGENCIES RELATING TO STRUCTURES AND BUILDINGS.

CHIPMAN DESIGN ARCHITECTURE INC  
1000 N. WINDYBROOK DRIVE  
PLAZA FLOOR SUITE 200  
ORLAND PARK, ILLINOIS 60462  
PHONE: 815.218.8000

STORE #02638  
ORLAND PARK FSU

15605 S. LAGRANGE RD  
ORLAND PARK, IL  
60462

SHEET TITLE  
EXTERIOR ELEVATIONS

VERSION: S08A-W  
ISSUE DATE: 09.24.2020

Job No. : 20-3653

Store : 02638

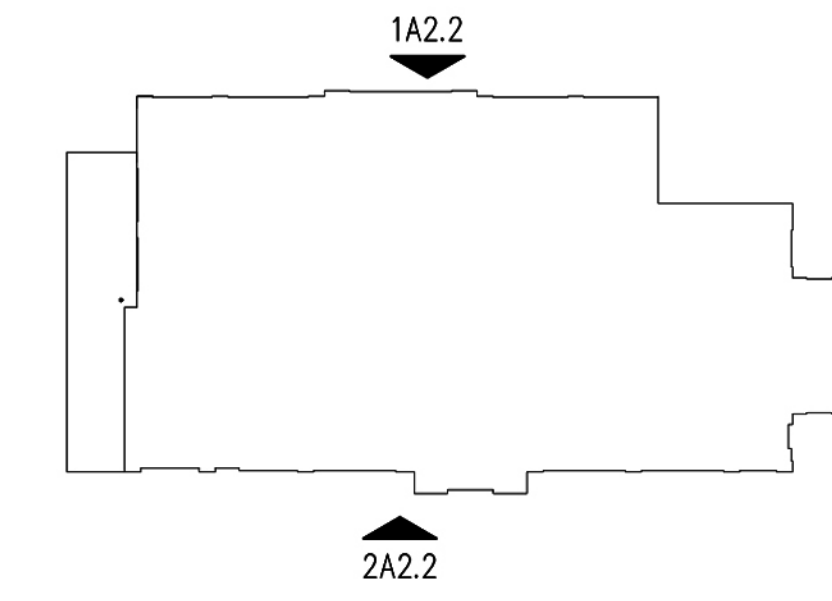
Date : \_\_\_\_\_

Drawn By : \_\_\_\_\_

Checked By: BM

Sheet  
A-2.1

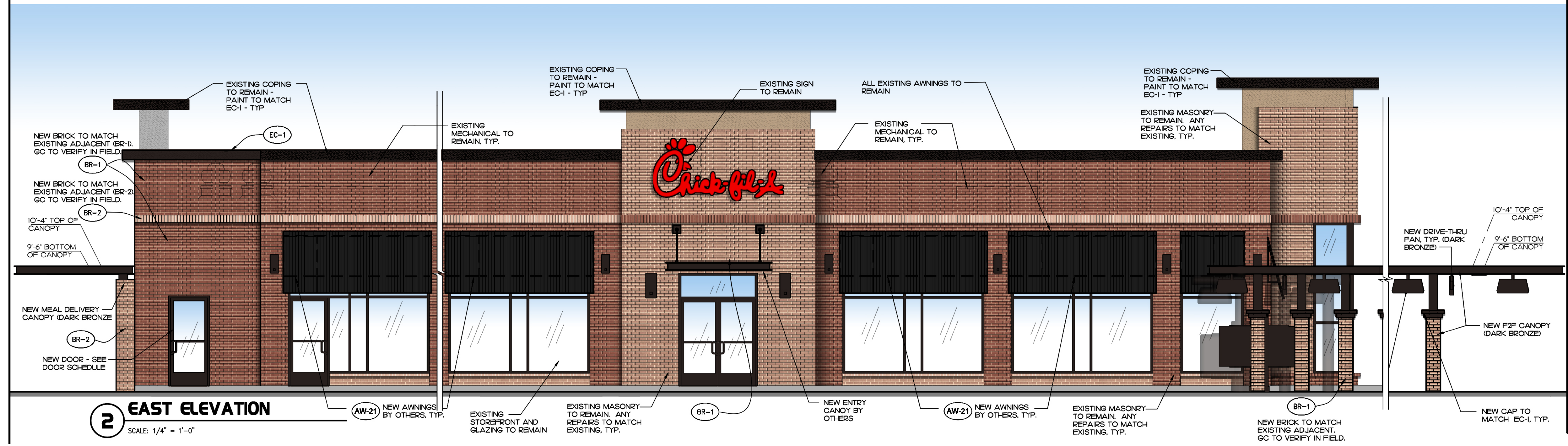
3 EXTERIOR FINISH SCHEDULE	
BR-1	BRICK #1 (MODULAR SIZE) MATCH EXISTING: RED VELOUR BY CUNNINGHAM BRICK MORTAR: MATCH EXISTING (BUFF) NOTE: GC TO PROVIDE A BOXED SET OF SAMPLES FOR COMPARISON/APPROVAL
BR-2	BRICK #1 (MODULAR SIZE) MATCH EXISTING: TAN BY CUNNINGHAM BRICK MORTAR: MATCH EXISTING (BUFF) NOTE: GC TO PROVIDE A BOXED SET OF SAMPLES FOR COMPARISON/APPROVAL
EC-1	PARAPET WALL COPING AS REQUIRED FOR NEW LOCATIONS DUROLAST/ EXCEPTIONAL METALS COLOR - BLACK (MATTE)
PT-23B	EXTERIOR PAINT FOR E.I.F.S. SHERWIN WILLIAMS, PRO INDUSTRIAL MULTI-SURFACE ACRYLIC COATING SW6108 / LATTE, MUST BE USED WITH SW LOXON CONDITIONER UNIVERSAL PRIMER
PT-21	EXTERIOR PAINT FOR SITE METALS SHERWIN WILLIAMS, PRO INDUSTRIAL MULTI-SURFACE ACRYLIC COATING SW6258 / TRICORN BLACK, MUST BE USED WITH SQ PRO INDUSTRIAL PRO-CRYL UNIVERSAL PRIMER
AW-21	AWNING FABRIC SUNBRELLA 4684-000 / SLATE



4 KEY PLAN  
SCALE: N.T.S.



1 WEST ELEVATION  
SCALE: 1/4" = 1'-0"



2 EAST ELEVATION  
SCALE: 1/4" = 1'-0"



**Chick-filée**

5200 Buffington Rd.  
Atlanta Georgia,  
30349-2998

Revisions:

Mark	Date	By
△		
△		
△		

Seal

I HEREBY CERTIFY THAT THESE PLANS HAVE BEEN PREPARED UNDER MY SUPERVISION AND THAT TO THE BEST OF MY KNOWLEDGE, THE SAME COMPLY WITH ALL CITY, STATE, AND FEDERAL ORDINANCES OF SALES TAX, ETC. RELATING TO THE PROJECT AND BUILDINGS.

**CHURMAN DESIGN ARCHITECTURE INC.**  
1350 E. TOWNHILL AVE  
DESPER, MISSOURI 64739  
PHONE: 847.298.6900

STORE #02638  
ORLAND PARK FSU

15605 S. LAGRANGE RD  
ORLAND PARK, IL  
60462

SHEET TITLE  
**EXTERIOR ELEVATIONS**

VERSION: S08A-W  
ISSUE DATE: 09.24.2020

Job No. : 20-3653  
Store : 02638  
Date :  
Drawn By :  
Checked By: BM

Sheet  
**A-2.2**