

GENERAL NOTES

- Contractor shall verify underground utility lines and is responsible for any damage.
- Contractor shall verify all existing conditions in the field prior to construction and shall notify landscape architect of any variance.
- Material quantities shown are for contractors convenience only. The Contractor must verify all material and supply sufficient materials to complete the job per plan.
- The landscape architect reserves the right to inspect trees and shrubs either at place of growth or at site before planting, for compliance with requirements of variety, size and quality.
- Work shall conform to American Standard for Nursery Stock, State of Illinois Horticultural Standards, and Local Municipal requirements.
- Contractor shall secure and pay for all permits, fees, and inspections necessary for the proper execution of this work and comply with all codes applicable to this work.
- See General Conditions and Specifications for landscape work for additional requirements.

NO.	DATE	DESCRIPTION
11	3.21.2022	
10	2.24.2022	
9	1.13.2022	
8	11.12.2021	
7	9.24.2021	
6	8.27.2021	
5	8.10.2021	
4	8.05.2021	
3	6.25.2021	
2	5.27.2021	
1	3.17.2021	

DATE	9.25.2020
PROJECT NO.	M19168
DRAWN	DHS
CHECKED	MGM
SHEET NO.	1 OF 8

E. NORTHERN BUFFER TYPE 1
PERIMETER LENGTH: ±438 L.F.
 (1 CANOPY TREE, 4 EVERGREEN TREE,
 16 SHRUBS OR GRASSES PER 100' L.F.)
 LANDSCAPING REQUIRED:
 13 CANOPY TREE
 5 EVERGREEN TREE
 70 SHRUBS OR GRASSES
 LANDSCAPING PROVIDED:
 3 EXISTING CANOPY TREES
 (#1764, #1766, #1776)
 10 CANOPY TREES
 5 EVERGREEN TREES
 83 SHRUBS
 63 GRASSES

H. MITIGATION TREES
 LANDSCAPING REQUIRED:
 10 4" CALIPER CANOPY TREES
 11 2.5" CALIPER CANOPY TREES
 LANDSCAPING PROVIDED:
 10 10' EVERGREEN TREES
 16 6' EVERGREEN TREES
 EVERGREEN TREES PROVIDED IN LIEU OF CANOPY TREES
 DUE TO SPACE CONSTRAINTS AND TO PROVIDE ADDITIONAL
 SCREENING FOR EXISTING RESIDENTS

D. EASTERN BUFFER TYPE 1
PERIMETER LENGTH: ±499 L.F.
 (10' WIDTH, 3 CANOPY TREES, 1 EVERGREEN TREE,
 16 SHRUBS OR GRASSES PER 100' L.F.)
 LANDSCAPING REQUIRED:
 15 CANOPY TREES
 5 EVERGREEN TREES
 80 SHRUBS OR GRASSES
 LANDSCAPING PROVIDED:
 15 CANOPY TREES
 5 EVERGREEN TREES
 70 SHRUBS
 60 GRASSES

FOUNDATION LANDSCAPE: ±300 L.F.
 (1 UNDERSTORY TREE, 16 SHRUBS/GRASSES
 PER 100' OF BUILDING FAÇADE)
 LANDSCAPING REQUIRED:
 3 UNDERSTORY TREES
 48 SHRUBS/GRASSES
 LANDSCAPING PROVIDED:
 6 EVERGREEN TREES
 3 UNDERSTORY TREES
 32 DECIDUOUS SHRUBS
 9 EVERGREEN SHRUBS
 119 GRASSES/PERENNIALS

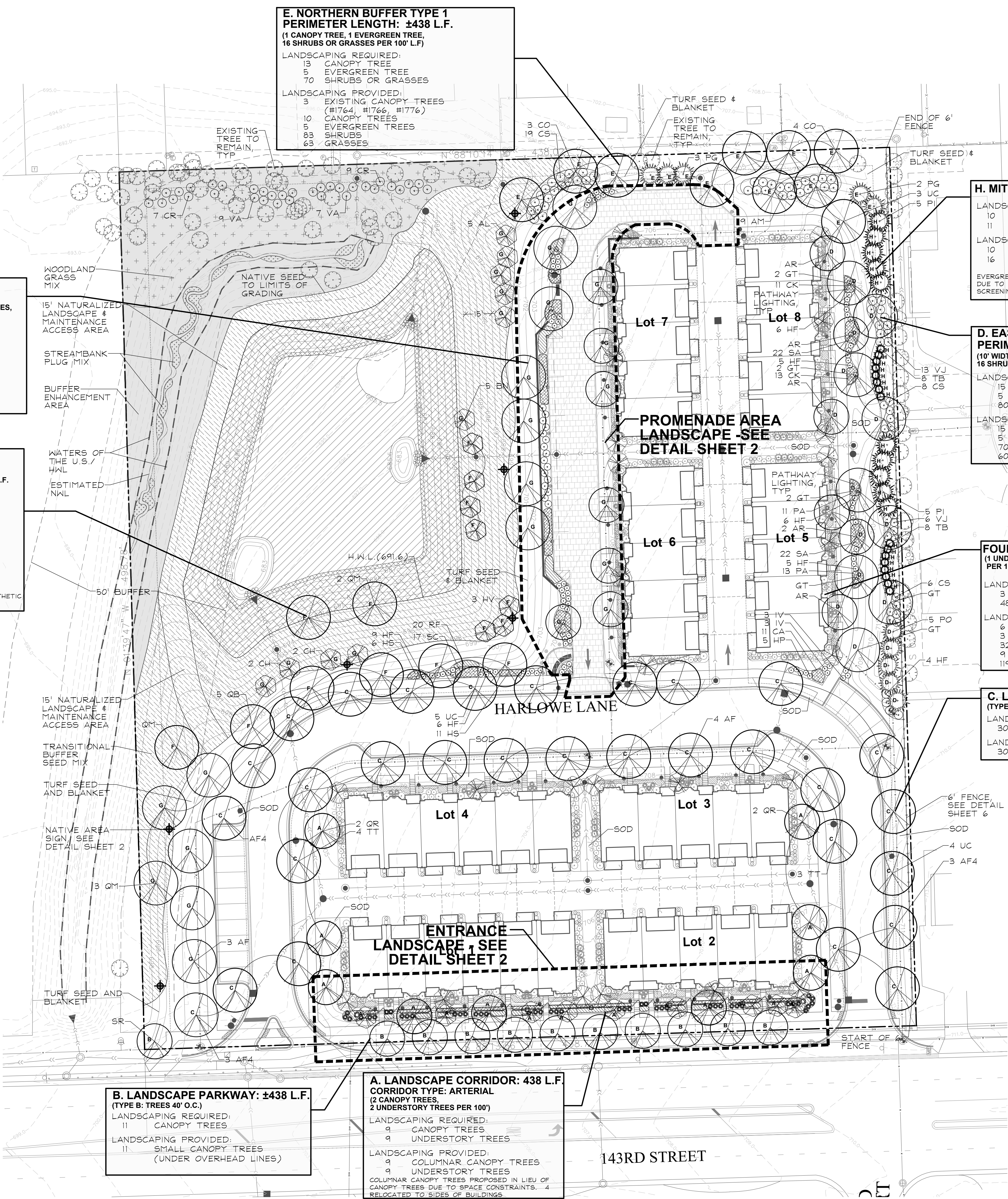
C. LANDSCAPE PARKWAY: ±1193 L.F.
 (TYPE C: TREES 40' O.C.)
 LANDSCAPING REQUIRED:
 30 CANOPY TREES
 LANDSCAPING PROVIDED:
 30 CANOPY TREES

A. LANDSCAPE CORRIDOR: 438 L.F.
 CORRIDOR TYPE: ARTERIAL
 (2 CANOPY TREES,
 2 UNDERSTORY TREES PER 100')
 LANDSCAPING REQUIRED:
 9 CANOPY TREES
 9 UNDERSTORY TREES
 LANDSCAPING PROVIDED:
 9 COLUMNAR CANOPY TREES
 9 UNDERSTORY TREES
 COLUMNAR CANOPY TREES PROPOSED IN LIEU OF
 CANOPY TREES DUE TO SPACE CONSTRAINTS. 4
 RELOCATED TO SIDES OF BUILDINGS

B. LANDSCAPE PARKWAY: ±438 L.F.
 (TYPE B: TREES 40' O.C.)
 LANDSCAPING REQUIRED:
 11 CANOPY TREES
 LANDSCAPING PROVIDED:
 11 SMALL CANOPY TREES
 (UNDER OVERHEAD LINES)

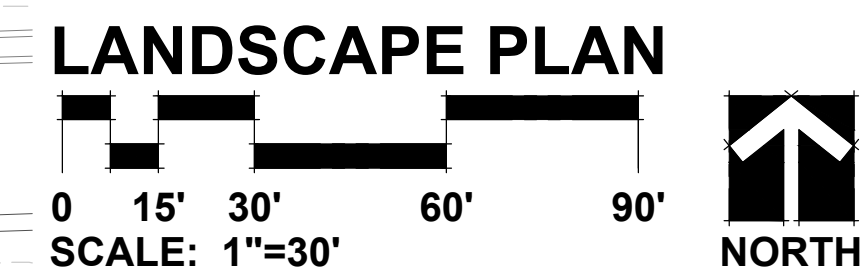
G. WESTERN BUFFER TYPE 2
PERIMETER LENGTH: ±498 L.F.
 (15' WIDTH, 4 CANOPY TREES, 2 UNDERSTORY TREES,
 18 SHRUBS OR GRASSES PER 100' L.F.)
 LANDSCAPING REQUIRED:
 20 CANOPY TREE
 10 UNDERSTORY TREE
 90 SHRUBS OR GRASSES
 LANDSCAPING PROVIDED:
 20 CANOPY TREES
 10 UNDERSTORY TREE
 22 SHRUBS
 81 GRASSES

F. DETENTION BASIN
HWL LENGTH: ±696 L.F.
 (1 CANOPY TREE, 1 UNDERSTORY TREE PER 100' L.F.,
 3 SHRUBS PER 50 L.F. OF HIGH WATER LINE)
 LANDSCAPING REQUIRED:
 7 CANOPY TREE
 7 UNDERSTORY TREE
 41 SHRUBS
 LANDSCAPING PROVIDED:
 7 CANOPY TREES
 8 UNDERSTORY TREES
 46 DECIDUOUS SHRUBS
 (46 SHRUBS PROVIDED ALONG WESTERN EDGE
 OF PROMENADE WHERE THEY HAVE GREATER AESTHETIC
 VALUE)



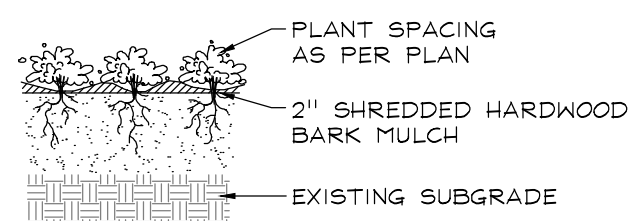
NATIVE AREA LEGEND

Key	Qty	Description	Size
	0.26	EMERGENT PLANTINGS	AC
	0.02	WET MEADOW SEED MIX	AC
	0.25	LOW PROFILE PRAIRIE SEED MIX	AC
	0.55	TRANSITIONAL BUFFER SEED MIX	AC
	0.22	WOODLAND GRASS SEED MIX	AC
	0.01	STREAMBANK PLUG MIX	AC
	0.44	BUFFER ENHANCEMENT AREA (INVASIVE SPECIES TREATMENT)	AC
	6	NATIVE AREA SIGN	AC

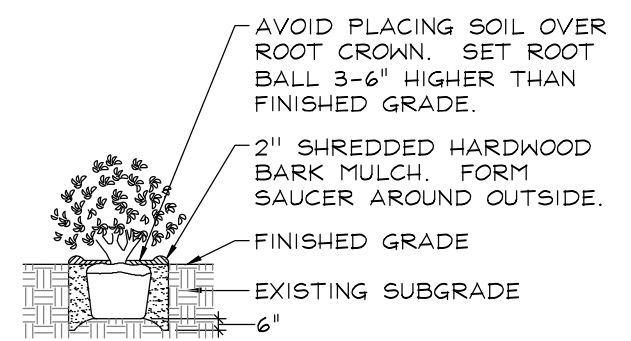


PLOT COVER

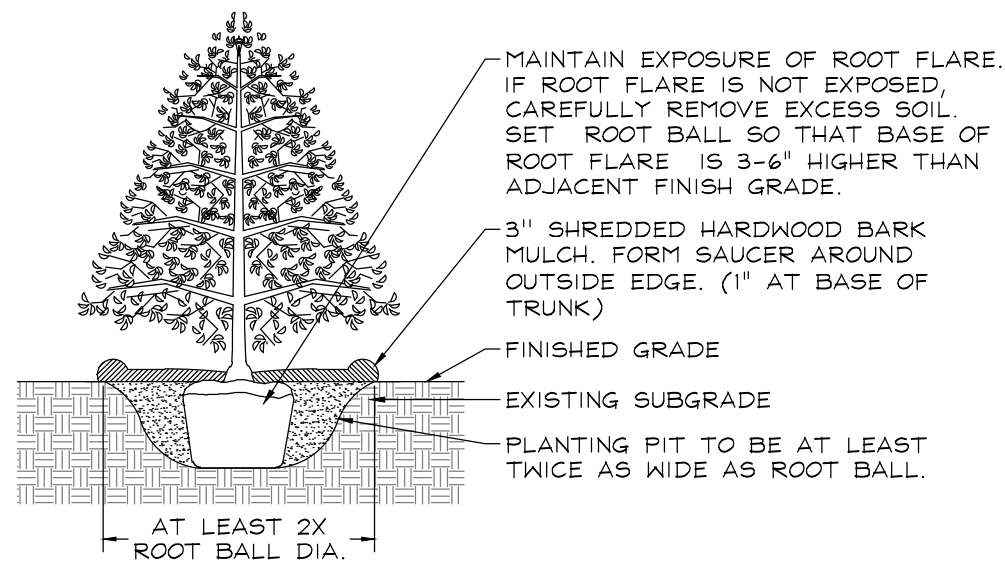
PLANTING DETAILS



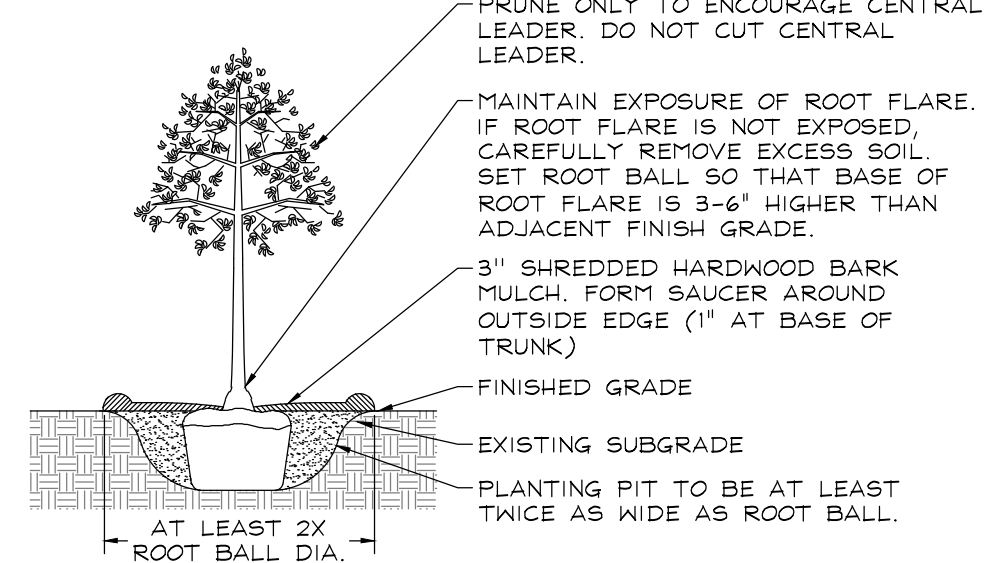
PERENNIALS AND GROUNDCOVERS
NOT TO SCALE



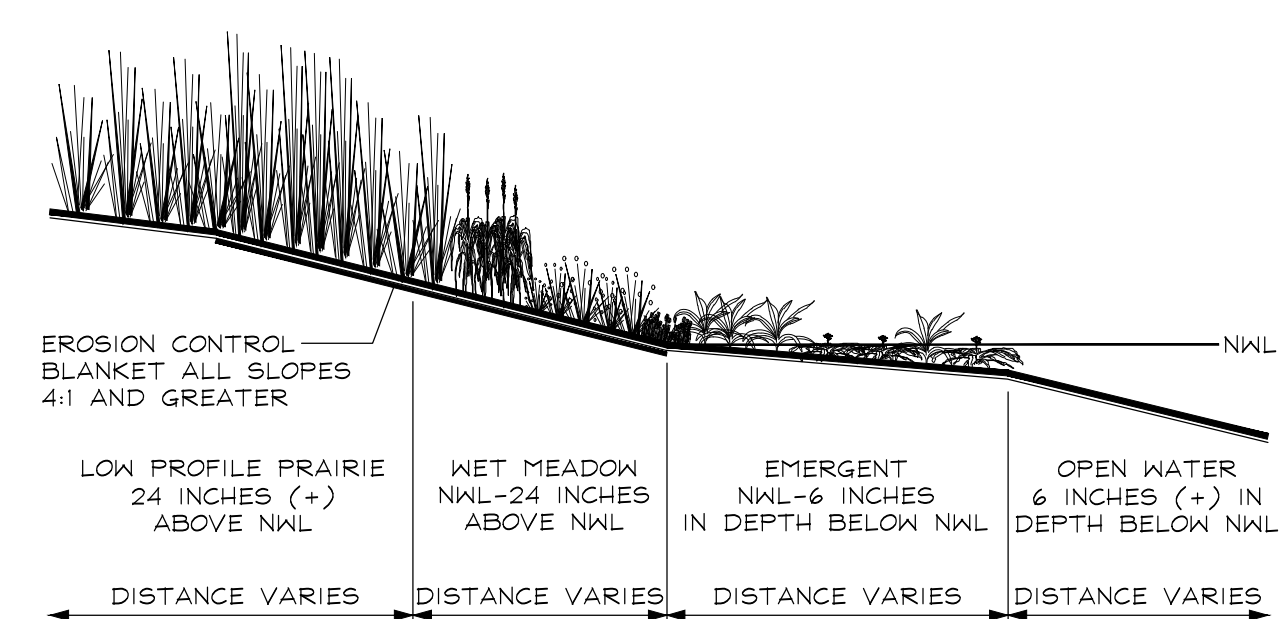
DECIDUOUS AND EVERGREEN SHRUBS
NOT TO SCALE



EVERGREEN TREES
NOT TO SCALE



DECIDUOUS TREES
NOT TO SCALE



PLANT COMMUNITY SECTION
NOT TO SCALE

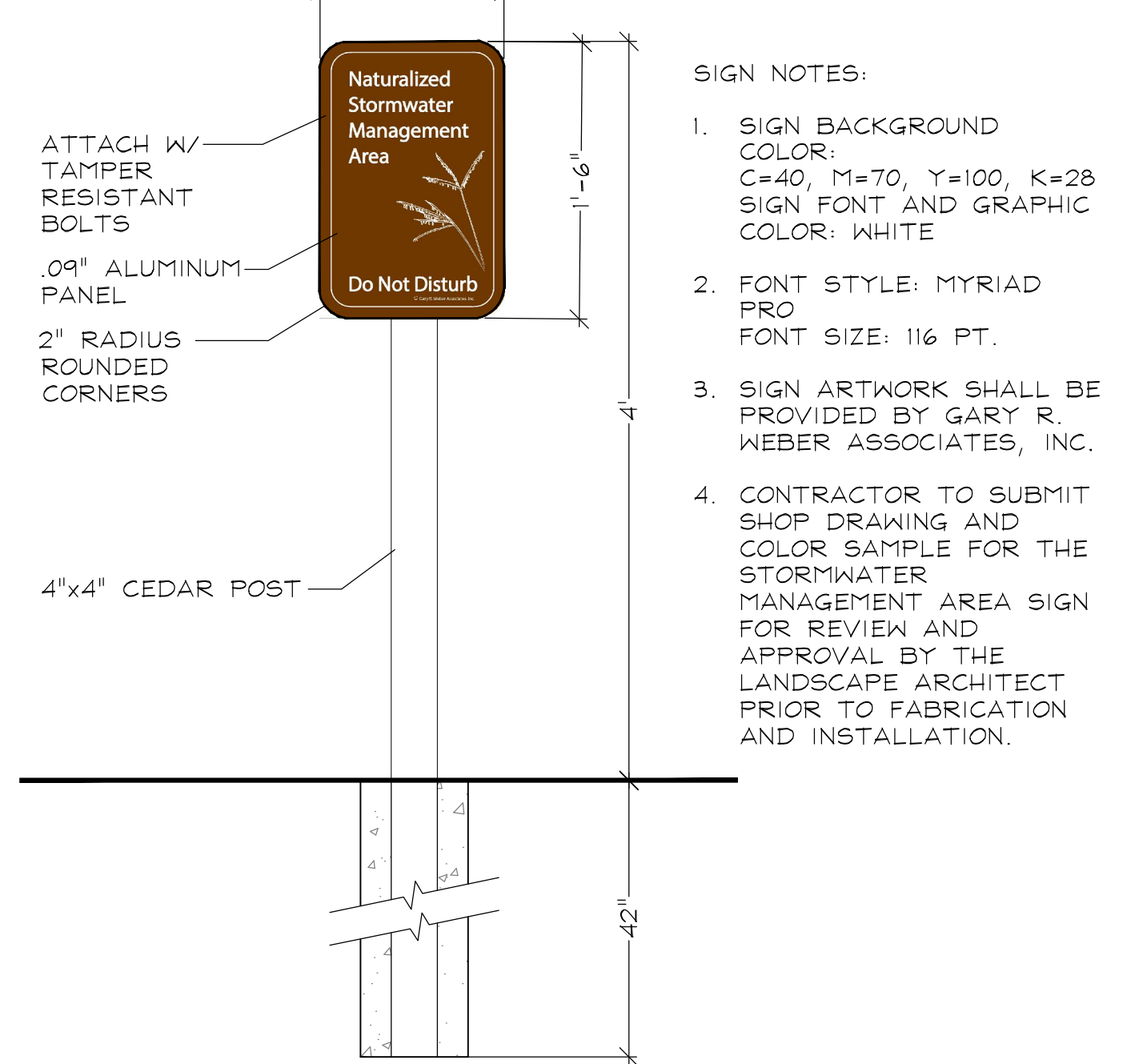
PLANT LIST

Key	Qty	Description	Value / Size	Unit / Size	Remarks	Range
Canopy Trees			103	Total Canopy Tree Count		
AF	10	Acer x freemanii	9.71%	Percent of Canopy Trees	Parway Tree	
AF4	7	AUTUMN BLAZE MAPLE	2.5" Cal.	Caliper at Installation (inches)	8" minimum branch height	
AR	13	Acer rubrum 'Arms 'n' legs'	12.62%	Percent of Canopy Trees	Columnar	Native Cultivar
CO	7	Corylus occidentalis	6.80%	Percent of Canopy Trees		Native
GT	9	Gleditsia triacanthos v. inermis 'Skyline'	8.74%	Percent of Canopy Trees		Native Cultivar
LT	7	Liriodendron tulipifera	6.80%	Percent of Canopy Trees		Native
OV	5	Ostrya virginiana	4.85%	Percent of Canopy Trees	Parway Tree	Native
QB	5	Quercus bicolor	4.85%	Percent of Canopy Trees	5" minimum branch height	Native
QM	6	Quercus macrocarpa	5.83%	Percent of Canopy Trees		Native
QR	9	Quercus robur 'Fastigata'	8.74%	Percent of Canopy Trees	Columnar	
SR	6	Syringa reticulata 'Very Silk'	5.83%	Percent of Canopy Trees	Parway Tree	
TT	7	Tilia tomentosa 'Stiefel'	6.80%	Percent of Canopy Trees	8" minimum branch height	
UC	12	Ulmus carpinifolia 'Regal'	11.65%	Percent of Canopy Trees	Parway Tree	
		REGAL SMOOTHLEAF FLEM	2.5" Cal.	Caliper at Installation (inches)	8" minimum branch height	
Evergreen Trees			47	Total Evergreen Tree Count		
PG	10	Picea glauca 'Densa'	21.28%	Percent of Evergreen Trees		
PO	5	Picea canadensis	10.64%	Percent of Evergreen Trees		
PI	10	Pinus Resinosa	21.28%	Percent of Evergreen Trees		
TO	6	Thuja occidentalis 'Emerald Green'	12.77%	Percent of Evergreen Trees		Native Cultivar
TD	16	Thuja occidentalis 'Danbrant'	34.04%	Percent of Evergreen Trees		Native Cultivar
Understory Trees			27	Total Understory Tree Count		
AL	5	Alnus incana	10.64%	Percent of Understory Trees	Multi-stem	Native
HN	5	Hamelia virginiana	18.52%	Percent of Understory Trees	Multi-stem	Native
CH	4	Carpinus caroliniana	14.81%	Percent of Understory Trees	Multi-stem	Native
CC	10	Cercis canadensis	37.04%	Percent of Understory Trees	Multi-stem	Native
HV	3	Hammelia virginiana	11.11%	Percent of Understory Trees	Multi-stem	Native
Deciduous Shrubs			320	Total Shrub Count		
AM	19	Aronia melanocarpa 'Morton'	5.94%	Percent of Shrubs	5' O.C.	Native Cultivar
CS	52	Cornus sericea 'Bailey'	16.25%	Percent of Shrubs	5' O.C.	Native Cultivar
CR	15	Cornus racemosa	4.69%	Percent of Shrubs	5' O.C.	Native
CF	15	Cornus stolonifera 'Arctic Fire'	4.69%	Percent of Shrubs	5' O.C.	Native Cultivar
IV	16	Ilex virginiana 'Little Henry'	5.00%	Percent of Shrubs	5' O.C.	Native Cultivar
HP	16	Hypoxis kalmianum 'Ames'	5.00%	Percent of Shrubs	5' O.C.	Native Cultivar
IF	63	Hydrangea paniculata 'SMH10P'	19.69%	Percent of Shrubs	7' O.C.	
RA	16	Rhus aromatica 'Neo-Lav'	5.00%	Percent of Shrubs	4' O.C.	
VA	16	Viburnum acerifolium	5.00%	Percent of Shrubs	5' O.C.	Native
VJ	29	Viburnum x jiddii	9.06%	Percent of Shrubs	4' O.C.	
Evergreen Shrubs			See Total Shrub Count Above			
JS	14	Juniperus chinensis v. sargentii 'Vivid'	4.38%	Percent of Shrubs	4' O.C.	
JK	25	Juniperus chinensis 'Kallay's Compact'	7.81%	Percent of Shrubs	4' O.C.	
TM	24	Taxus x media 'Everlow'	7.50%	Percent of Shrubs	4' O.C.	

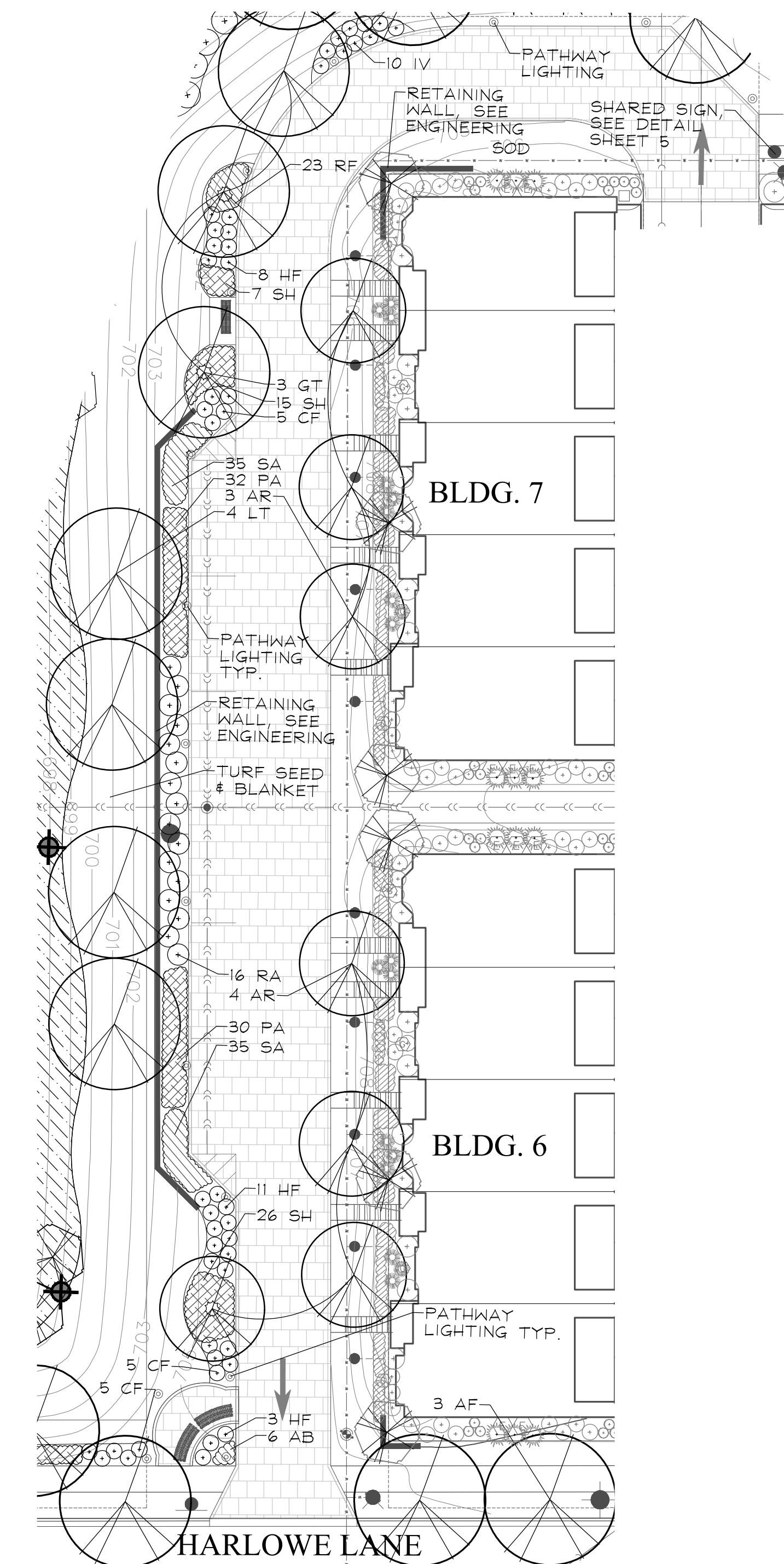
Key	Qty	Description	Value / Size	Unit / Size	Remarks	Range
Ornamental Grasses			323	Total Ornamental Grass Count		
CA	26	Calamagrostis x acutiflora 'Karl Foerster'	8.09%	Percent of Ornamental Grasses	30' O.C.	
CK	24	Calamagrostis brachytricha	7.43%	Percent of Ornamental Grasses	30' O.C.	
IS	17	Holcusostichon scoparius 'Saphirspindel'	5.26%	Percent of Ornamental Grasses	24' O.C.	
PA	86	Panicum alopecuroides 'Tumult'	26.63%	Percent of Ornamental Grasses	30' O.C.	
PV	24	Panicum virgatum 'Northwind'	7.43%	Percent of Ornamental Grasses	30' O.C.	Native Cultivar
SC	17	Schizanthus scoparius 'Carousef'	5.26%	Percent of Ornamental Grasses	24' O.C.	Native Cultivar
SH	85	Sporobolus heterolepis	26.32%	Percent of Ornamental Grasses	24' O.C.	Native
SA	44	Sesleria autumnalis	13.62%	Percent of Ornamental Grasses	24' O.C.	
		AUTUMN MOOR GRASS	11.6"	Height at Installation (inches)		

Key	Qty	Description	Value / Size	Unit / Size	Remarks	Range
Perennials			290	Total Perennial Count		
AB	26	Allium 'Summer Beauty'	8.97%	Percent of Perennials	18" O.C.	
AC	20	Achillea millefolium 'Bob Inhof'	6.90%	Percent of Perennials	18" O.C.	
HR	56	Hemerocallis 'Happy Returns'	19.31%	Percent of Perennials	18" O.C.	
CC	20	Ceranium x cantabrigiensis 'Karmia'	6.90%	Percent of Perennials	18" O.C.	
RF	43	Rudbeckia fulgida 'Goldstrut'	14.83%	Percent of Perennials	18" O.C.	Native Cultivar
PF	20	Phlox x glaberrima 'Forever Pink'	6.90%	Percent of Perennials	18" O.C.	
SA	82	Salvia nemorosa 'May Night'	28.28%	Percent of Perennials	18" O.C.	
SS	23	Sedum spectabile 'Autumn Joy'	7.93%	Percent of Perennials	18" O.C.	

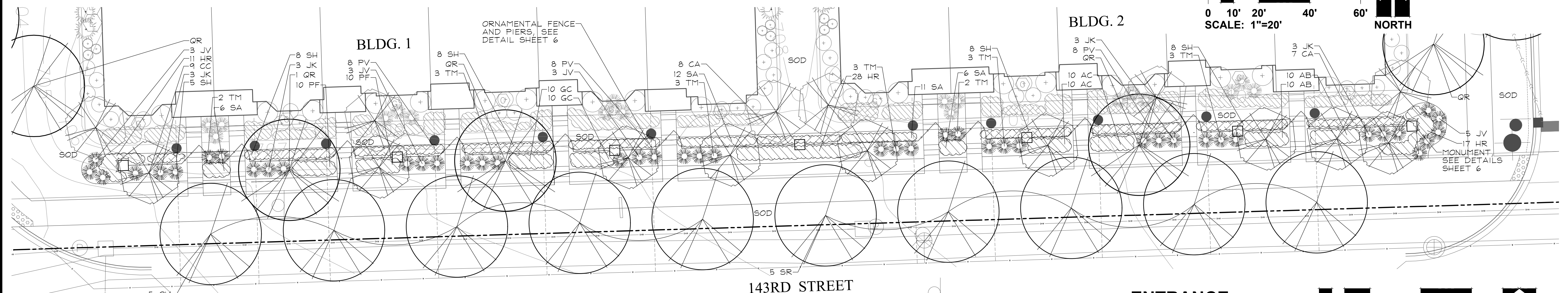
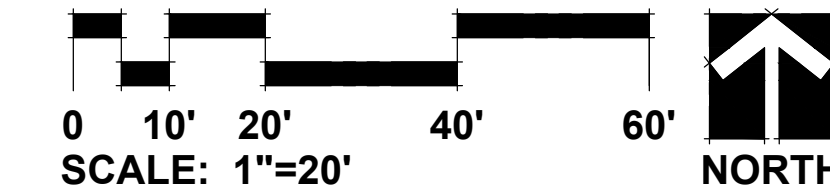
Key	Qty	Description	Value / Size	Unit / Size	Remarks	Range
Misc. Materials						
368		Shredded Hardwood Mulch		CY		
40.972		Sod		S.Y.		
0.34		Turf Seed & Blanket		AC		



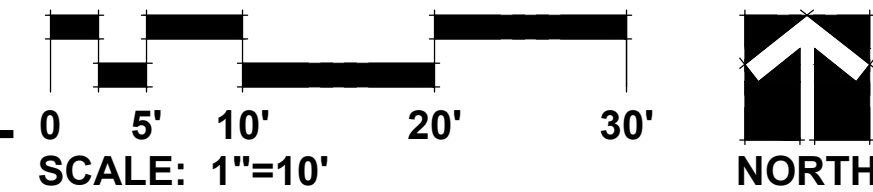
NATURALIZED AREA SIGN DETAIL
NOT TO SCALE



PROMENADE LANDSCAPE DETAIL



ENTRANCE LANDSCAPE DETAIL



GRWA
GARY R. WEBER ASSOCIATES, INC.
LAND PLANNING
ECOLOGICAL CONSULTING
LANDSCAPE ARCHITECTURE
402 W. LIBERTY DRIVE
WHEATON, ILLINOIS 60187
PHONE: 630-668-1197

CLIENT
M/I HOMES
400 E. DIEHL ROAD, SUITE 230
NAPERVILLE, IL 60563
ENGINEERED BY
CEMCON, LTD.
2280 WHITE OAK CIRCLE, SUITE 100
AURORA, ILLINOIS 60002-9675

METRO EAST

ORLAND PARK, ILLINOIS

LANDSCAPE DETAILS

NO.	DATE	DESCRIPTION
11	3.21.2022	
10	2.24.2022	
9	1.13.2022	
8	11.12.2021	
7	9.24.2021	
6	8.27.2021	
5	8.10.2021	
4	8.05.2021	
3	6.25.2021	
2	5.27.2021	
1	3.17.2021	

DATE	9.25.2020
PROJECT NO.	M19168
DRAWN	DHS
CHECKED	MGM
SHEET NO.	